

## RIN3 Polyclonal Antibody

<b>Catalog No :</b>	YT4145
<b>Reactivity :</b>	Human;Mouse
<b>Applications :</b>	WB;ELISA;IHC
<b>Target :</b>	RIN3
<b>Gene Name :</b>	RIN3
<b>Protein Name :</b>	Ras and Rab interactor 3
<b>Human Gene Id :</b>	79890
<b>Human Swiss Prot No :</b>	Q8TB24
<b>Mouse Swiss Prot No :</b>	P59729
<b>Immunogen :</b>	The antiserum was produced against synthesized peptide derived from human RIN3. AA range:391-440
<b>Specificity :</b>	RIN3 Polyclonal Antibody detects endogenous levels of RIN3 protein.
<b>Formulation :</b>	Liquid in PBS containing 50% glycerol, 0.5% BSA and 0.02% sodium azide.
<b>Source :</b>	Polyclonal, Rabbit,IgG
<b>Dilution :</b>	WB 1:500-2000;IHC 1:50-300; ELISA 2000-20000
<b>Purification :</b>	The antibody was affinity-purified from rabbit antiserum by affinity-chromatography using epitope-specific immunogen.
<b>Concentration :</b>	1 mg/ml
<b>Storage Stability :</b>	-15°C to -25°C/1 year(Do not lower than -25°C)
<b>Observed Band :</b>	107kD

**Background :** Summary: This protein encoded by this gene is a member of the RIN family of Ras interaction-interference proteins, which are binding partners to the RAB5 small GTPases. The protein functions as a guanine nucleotide exchange for RAB5B and RAB31. Alternative splicing results in multiple transcript variants. [provided by RefSeq, Feb 2016],

**Function :** caution:The region from Asp-168 to Pro-327 is deduced from the genomic sequence by similarity to the mouse sequence.,function:Potential Ras effector protein. May function as a guanine nucleotide exchange (GEF), by exchanging bound GDP for free GTP.,similarity:Belongs to the RIN (Ras interaction/interference) family.,similarity:Contains 1 Ras-associating domain.,similarity:Contains 1 SH2 domain.,similarity:Contains 1 VPS9 domain.,subcellular location:Activation of tyrosine phosphorylation signaling induces translocation to cytoplasmic vesicles.,subunit:Interacts with RAB5B and BIN1.,tissue specificity:Widely expressed.,

**Subcellular Location :** Cytoplasm . Cytoplasmic vesicle . Early endosome . Activation of tyrosine phosphorylation signaling induces translocation to cytoplasmic vesicles. .

**Expression :** Widely expressed.

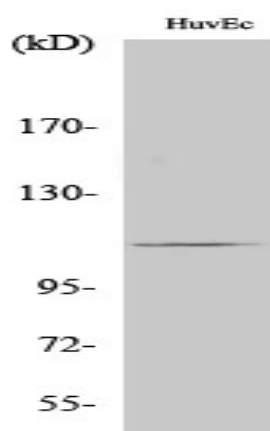
**Sort :** 14523

**No4 :** 1

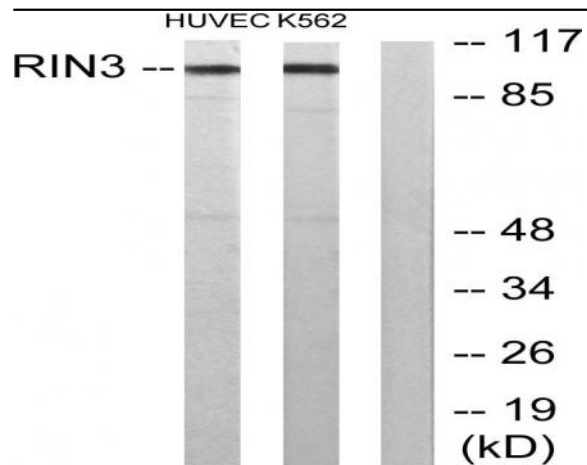
**Host :** Rabbit

**Modifications :** Unmodified

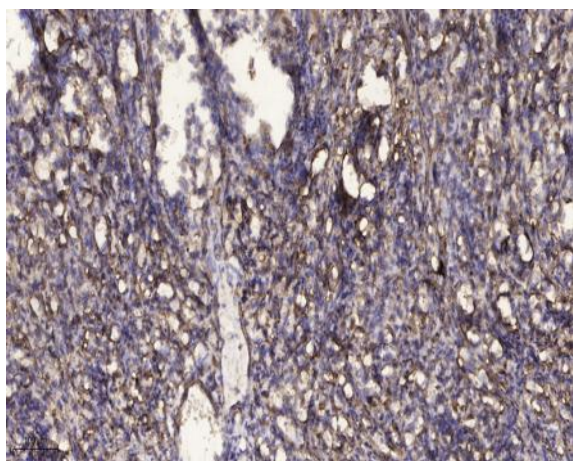
## Products Images



Western Blot analysis of various cells using RIN3 Polyclonal Antibody



Western blot analysis of lysates from HUVEC and K562 cells, using RIN3 Antibody. The lane on the right is blocked with the synthesized peptide.



Immunohistochemical analysis of paraffin-embedded human Squamous cell carcinoma of lung. 1, Antibody was diluted at 1:200(4° overnight). 2, Tris-EDTA,pH9.0 was used for antigen retrieval. 3,Secondary antibody was diluted at 1:200(room temperature, 45min).