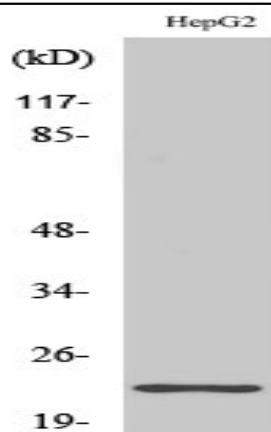


Ribosomal Protein S9 Polyclonal Antibody

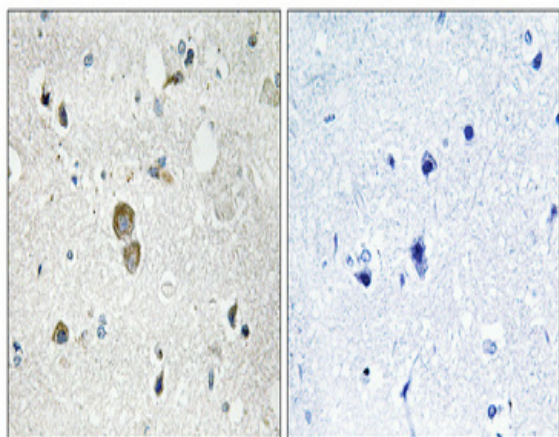
| | |
|------------------------------|----------------------------------------------------------------------------------------------------------------|
| Catalog No : | YT4142 |
| Reactivity : | Human;Mouse;Rat |
| Applications : | WB;IHC;IF;ELISA |
| Target : | Ribosomal Protein S9 |
| Fields : | >>Ribosome;>>Coronavirus disease - COVID-19 |
| Gene Name : | RPS9 |
| Protein Name : | 40S ribosomal protein S9 |
| Human Gene Id : | 6203 |
| Human Swiss Prot No : | P46781 |
| Mouse Gene Id : | 76846 |
| Mouse Swiss Prot No : | Q6ZWN5 |
| Rat Gene Id : | 1.00909e+008 |
| Rat Swiss Prot No : | P29314 |
| Immunogen : | The antiserum was produced against synthesized peptide derived from human RPS9. AA range:31-80 |
| Specificity : | Ribosomal Protein S9 Polyclonal Antibody detects endogenous levels of Ribosomal Protein S9 protein. |
| Formulation : | Liquid in PBS containing 50% glycerol, 0.5% BSA and 0.02% sodium azide. |
| Source : | Polyclonal, Rabbit,IgG |
| Dilution : | WB 1:500 - 1:2000. IHC 1:100 - 1:300. IF 1:200 - 1:1000. ELISA: 1:20000. Not yet tested in other applications. |

| | |
|-------------------------------|-------------------------------------------------------------------------------------------------------------------------------------------------------------------------------------------------------------------------------------------------------------------------------------------------------------------------------------------------------------------------------------------------------------------------------------------------------------------------------------------------------------------------------------------------------------------------------------------------------------------------------------------------------------------------------------------------------------------------------------------------------------------------------------------------------------|
| Purification : | The antibody was affinity-purified from rabbit antiserum by affinity-chromatography using epitope-specific immunogen. |
| Concentration : | 1 mg/ml |
| Storage Stability : | -15°C to -25°C/1 year(Do not lower than -25°C) |
| Observed Band : | 23kD |
| Cell Pathway : | Ribosome; |
| Background : | Ribosomes, the organelles that catalyze protein synthesis, consist of a small 40S subunit and a large 60S subunit. Together these subunits are composed of 4 RNA species and approximately 80 structurally distinct proteins. This gene encodes a ribosomal protein that is a component of the 40S subunit. The protein belongs to the S4P family of ribosomal proteins. It is located in the cytoplasm. Variable expression of this gene in colorectal cancers compared to adjacent normal tissues has been observed, although no correlation between the level of expression and the severity of the disease has been found. As is typical for genes encoding ribosomal proteins, multiple processed pseudogenes derived from this gene are dispersed through the genome. [provided by RefSeq, Jul 2008], |
| Function : | similarity:Belongs to the ribosomal protein S4P family.,similarity:Contains 1 S4 RNA-binding domain., |
| Subcellular Location : | Cytoplasm . Localized in cytoplasmic mRNP granules containing untranslated mRNAs. |
| Expression : | Brain,Colon,Muscle,Placenta,Skin, |
| Sort : | 14514 |
| No4 : | 1 |
| Host : | Rabbit |
| Modifications : | Unmodified |

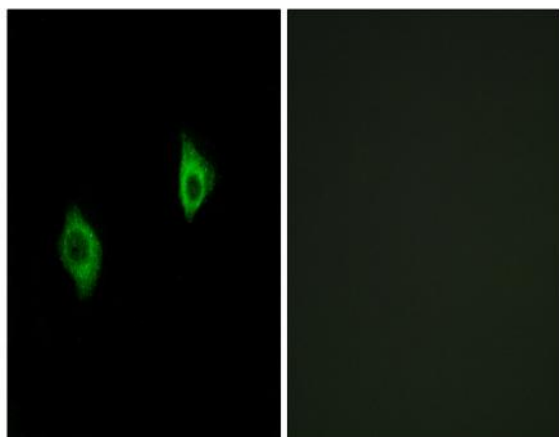
Products Images



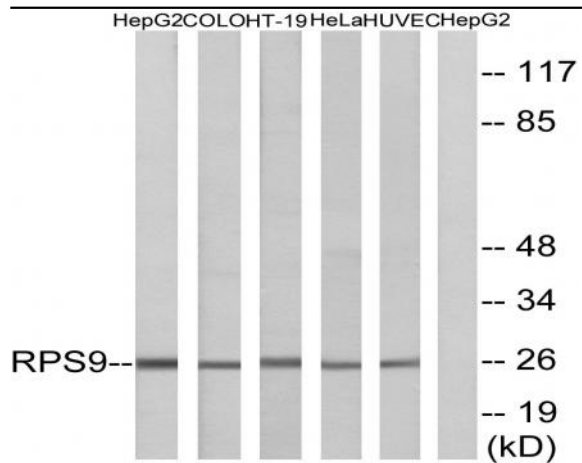
Western Blot analysis of various cells using Ribosomal Protein S9 Polyclonal Antibody diluted at 1:500



Immunohistochemical analysis of paraffin-embedded Human brain. Antibody was diluted at 1:100(4° overnight). High-pressure and temperature Tris-EDTA,pH8.0 was used for antigen retrieval. Negative control (right) obtained from antibody was pre-absorbed by immunogen peptide.



Immunofluorescence analysis of A549 cells, using RPS9 Antibody. The picture on the right is blocked with the synthesized peptide.



Western blot analysis of lysates from HepG2, COLO, HT-29, HeLa, and HUVEC cells, using RPS9 Antibody. The lane on the right is blocked with the synthesized peptide.