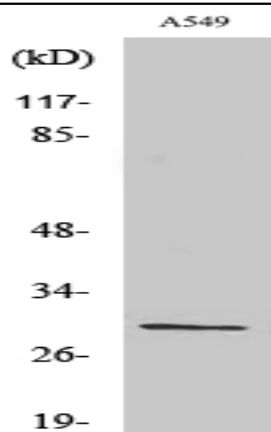


Ribosomal Protein S8 Polyclonal Antibody

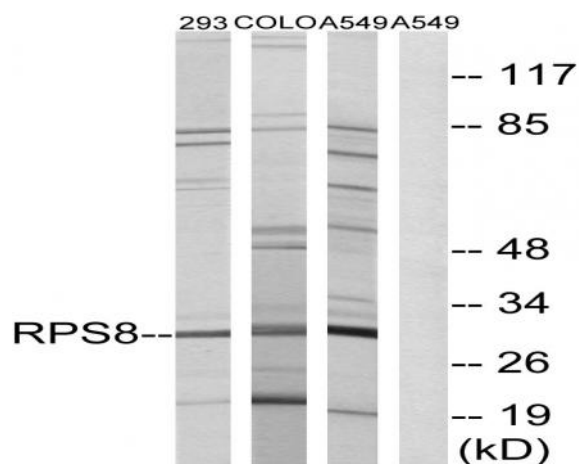
Catalog No :	YT4141
Reactivity :	Human;Mouse;Rat
Applications :	WB;IHC;IF;ELISA
Target :	Ribosomal Protein S8
Fields :	>>Ribosome;>>Coronavirus disease - COVID-19
Gene Name :	RPS8
Protein Name :	40S ribosomal protein S8
Human Gene Id :	6202
Human Swiss Prot No :	P62241
Mouse Gene Id :	1.0004e+008
Mouse Swiss Prot No :	P62242
Rat Gene Id :	297756
Rat Swiss Prot No :	P62243
Immunogen :	The antiserum was produced against synthesized peptide derived from human RPS8. AA range:111-160
Specificity :	Ribosomal Protein S8 Polyclonal Antibody detects endogenous levels of Ribosomal Protein S8 protein.
Formulation :	Liquid in PBS containing 50% glycerol, 0.5% BSA and 0.02% sodium azide.
Source :	Polyclonal, Rabbit,IgG
Dilution :	WB 1:500 - 1:2000. IHC 1:100 - 1:300. ELISA: 1:20000.. IF 1:50-200

Purification :	The antibody was affinity-purified from rabbit antiserum by affinity-chromatography using epitope-specific immunogen.
Concentration :	1 mg/ml
Storage Stability :	-15°C to -25°C/1 year(Do not lower than -25°C)
Observed Band :	30kD
Cell Pathway :	Ribosome;
Background :	<p>Ribosomes, the organelles that catalyze protein synthesis, consist of a small 40S subunit and a large 60S subunit. Together these subunits are composed of 4 RNA species and approximately 80 structurally distinct proteins. This gene encodes a ribosomal protein that is a component of the 40S subunit. The protein belongs to the S8E family of ribosomal proteins. It is located in the cytoplasm. Increased expression of this gene in colorectal tumors and colon polyps compared to matched normal colonic mucosa has been observed. This gene is co-transcribed with the small nucleolar RNA genes U38A, U38B, U39, and U40, which are located in its fourth, fifth, first, and second introns, respectively. As is typical for genes encoding ribosomal proteins, there are multiple processed pseudogenes of this gene dispersed through the genome. [provided by RefSeq, Jul 2008],</p>
Function :	similarity:Belongs to the ribosomal protein S8e family.,
Subcellular Location :	Cytoplasm . Membrane ; Lipid-anchor . Localized in cytoplasmic mRNP granules containing untranslated mRNAs.
Expression :	Colon adenocarcinoma,Liver,Placenta,Thalamus,Uterus,
Sort :	14513
No4 :	1
Host :	Rabbit
Modifications :	Unmodified

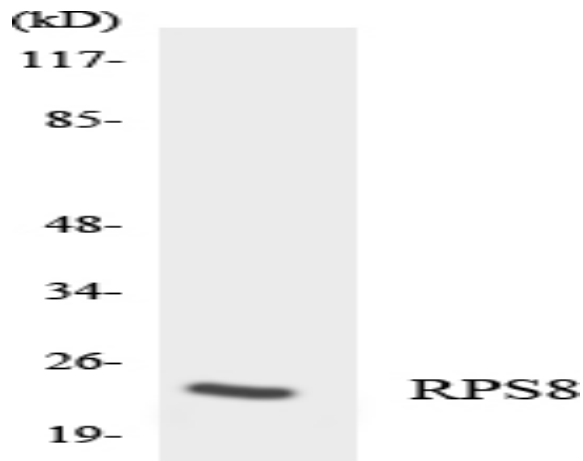
Products Images



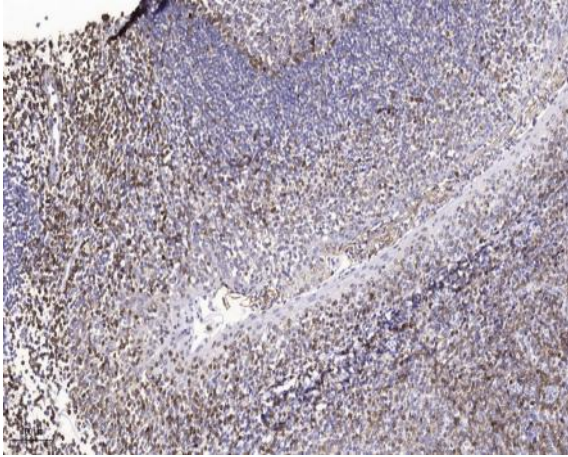
Western Blot analysis of various cells using Ribosomal Protein S8 Polyclonal Antibody diluted at 1:2000



Western blot analysis of lysates from A549, 293, and COLO cells, using RPS8 Antibody. The lane on the right is blocked with the synthesized peptide.



Western blot analysis of the lysates from Jurkat cells using RPS8 antibody.



Immunohistochemical analysis of paraffin-embedded human tonsil. 1, Tris-EDTA, pH 9.0 was used for antigen retrieval. 2 Antibody was diluted at 1:200 (4° overnight). 3, Secondary antibody was diluted at 1:200 (room temperature, 45min).