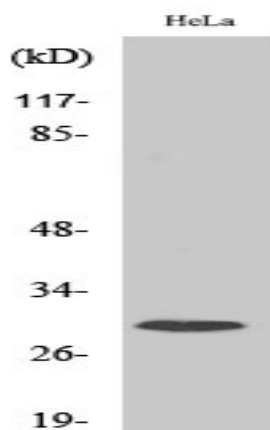


Ribosomal Protein S4X Polyclonal Antibody

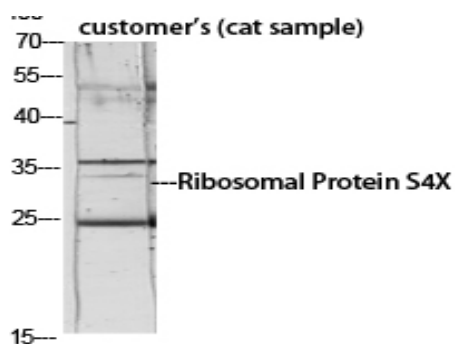
Catalog No :	YT4135
Reactivity :	Human;Mouse;Rat;Cat
Applications :	WB;ELISA;IHC
Target :	Ribosomal Protein S4X
Fields :	>>Ribosome;>>Coronavirus disease - COVID-19
Gene Name :	RPS4X
Protein Name :	40S ribosomal protein S4 X isoform
Human Gene Id :	6191
Human Swiss Prot No :	P62701
Mouse Gene Id :	20102
Mouse Swiss Prot No :	P62702
Rat Gene Id :	1.00363e+008
Rat Swiss Prot No :	P62703
Immunogen :	The antiserum was produced against synthesized peptide derived from human RPS4X. AA range:81-130
Specificity :	Ribosomal Protein S4X Polyclonal Antibody detects endogenous levels of Ribosomal Protein S4X protein.
Formulation :	Liquid in PBS containing 50% glycerol, 0.5% BSA and 0.02% sodium azide.
Source :	Polyclonal, Rabbit,IgG
Dilution :	WB 1:500-2000;IHC 1:50-300; ELISA 2000-20000

Purification :	The antibody was affinity-purified from rabbit antiserum by affinity-chromatography using epitope-specific immunogen.
Concentration :	1 mg/ml
Storage Stability :	-15°C to -25°C/1 year(Do not lower than -25°C)
Observed Band :	30kD
Cell Pathway :	Ribosome;
Background :	<p>Cytoplasmic ribosomes, organelles that catalyze protein synthesis, consist of a small 40S subunit and a large 60S subunit. Together these subunits are composed of 4 RNA species and approximately 80 structurally distinct proteins. This gene encodes ribosomal protein S4, a component of the 40S subunit. Ribosomal protein S4 is the only ribosomal protein known to be encoded by more than one gene, namely this gene and ribosomal protein S4, Y-linked (RPS4Y). The 2 isoforms encoded by these genes are not identical, but are functionally equivalent. Ribosomal protein S4 belongs to the S4E family of ribosomal proteins. This gene is not subject to X-inactivation. It has been suggested that haploinsufficiency of the ribosomal protein S4 genes plays a role in Turner syndrome; however, this hypothesis is controversial. As is typical for genes encoding ribosomal proteins, there are multiple processed pseud</p>
Function :	miscellaneous:This isoform is encoded on the X chromosome.,similarity:Belongs to the ribosomal protein S4e family.,similarity:Contains 1 S4 RNA-binding domain.,
Subcellular Location :	Cytoplasm . Localized in cytoplasmic mRNP granules containing untranslated mRNAs.
Expression :	Adipose tissue,Brain,Cerebellum,Eye,Muscle,Placenta,Thymus,
Tag :	orthogonal
Sort :	14504
No4 :	1
Host :	Rabbit
Modifications :	Unmodified

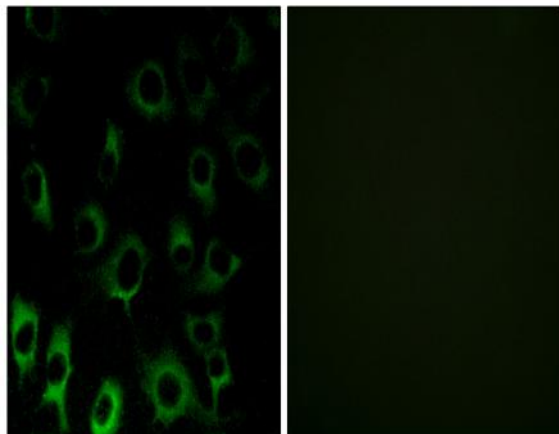
Products Images



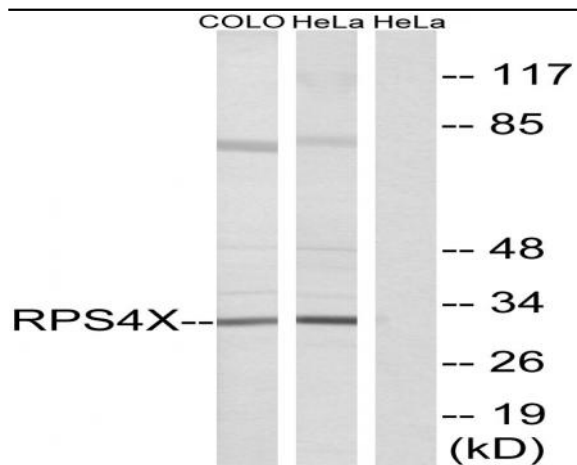
Western Blot analysis of various cells using Ribosomal Protein S4X Polyclonal Antibody diluted at 1:1000



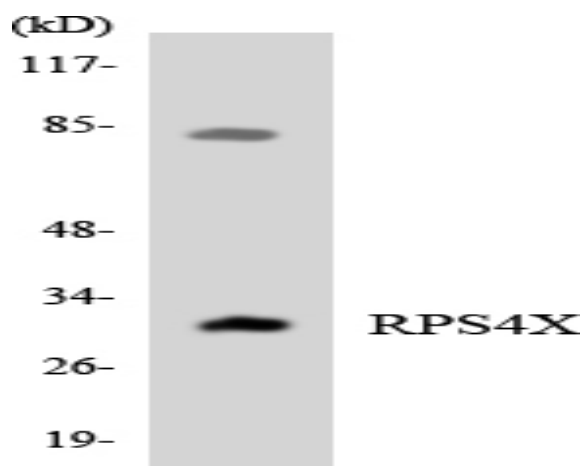
Western Blot analysis of customer's (cat sample) using Ribosomal Protein S4X Polyclonal Antibody diluted at 1:1000



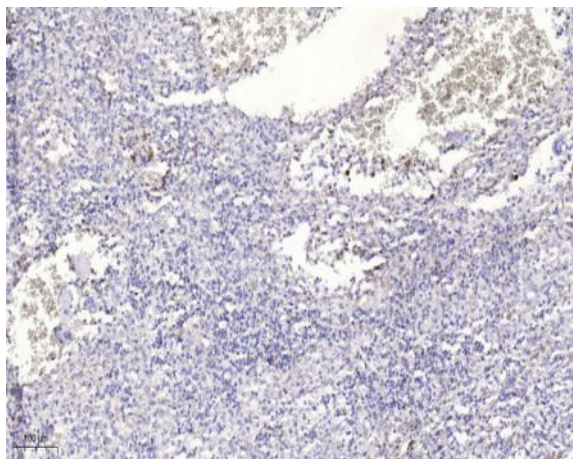
Immunofluorescence analysis of HUVEC cells, using RPS4X Antibody. The picture on the right is blocked with the synthesized peptide.



Western blot analysis of lysates from HeLa and COLO cells, using RPS4X Antibody. The lane on the right is blocked with the synthesized peptide.



Western blot analysis of the lysates from HT-29 cells using RPS4X antibody.



Immunohistochemical analysis of paraffin-embedded human spleen. 1, Antibody was diluted at 1:200(4° overnight). 2, Tris-EDTA,pH9.0 was used for antigen retrieval. 3,Secondary antibody was diluted at 1:200(room temperature, 45min).