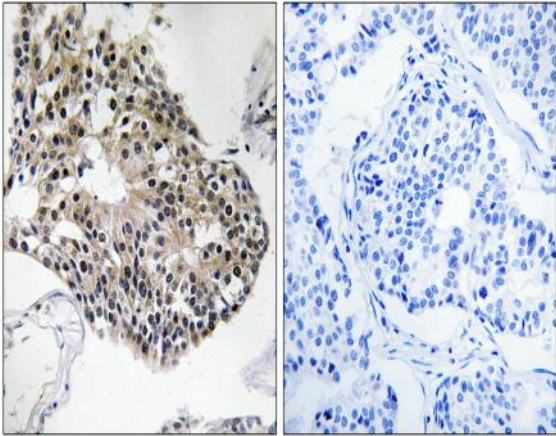


Ribosomal Protein S25 Polyclonal Antibody

Catalog No :	YT4132
Reactivity :	Human;Mouse;Rat
Applications :	IHC;IF;ELISA
Target :	Ribosomal Protein S25
Fields :	>>Ribosome;>>Coronavirus disease - COVID-19
Gene Name :	RPS25
Protein Name :	40S ribosomal protein S25
Human Gene Id :	6230
Human Swiss Prot No :	P62851
Mouse Gene Id :	75617
Mouse Swiss Prot No :	P62852
Rat Gene Id :	122799
Rat Swiss Prot No :	P62853
Immunogen :	The antiserum was produced against synthesized peptide derived from human RPS25. AA range:76-125
Specificity :	Ribosomal Protein S25 Polyclonal Antibody detects endogenous levels of Ribosomal Protein S25 protein.
Formulation :	Liquid in PBS containing 50% glycerol, 0.5% BSA and 0.02% sodium azide.
Source :	Polyclonal, Rabbit,IgG
Dilution :	IHC 1:100 - 1:300. ELISA: 1:10000.. IF 1:50-200

Purification :	The antibody was affinity-purified from rabbit antiserum by affinity-chromatography using epitope-specific immunogen.
Concentration :	1 mg/ml
Storage Stability :	-15°C to -25°C/1 year(Do not lower than -25°C)
Molecularweight :	14kD
Cell Pathway :	Ribosome;
Background :	Ribosomes, the organelles that catalyze protein synthesis, consist of a small 40S subunit and a large 60S subunit. Together these subunits are composed of 4 RNA species and approximately 80 structurally distinct proteins. This gene encodes a ribosomal protein that is a component of the 40S subunit. The protein belongs to the S25E family of ribosomal proteins. It is located in the cytoplasm. As is typical for genes encoding ribosomal proteins, there are multiple processed pseudogenes of this gene dispersed through the genome. [provided by RefSeq, Jul 2008],
Function :	similarity:Belongs to the ribosomal protein S25e family.,
Subcellular Location :	nucleus,nucleoplasm,nucleolus,cytoplasm,cytosol,ribosome,small ribosomal subunit,cytosolic small ribosomal subunit,extracellular matrix,extracellular exosome,
Expression :	Pancreas,Placenta,Skin,
Sort :	14499
No4 :	1
Host :	Rabbit
Modifications :	Unmodified

Products Images



Immunohistochemistry analysis of paraffin-embedded human breast carcinoma tissue, using RPS25 Antibody. The picture on the right is blocked with the synthesized peptide.