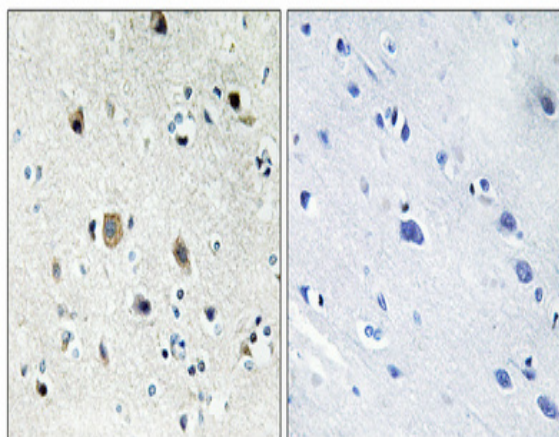


Ribosomal Protein S20 Polyclonal Antibody

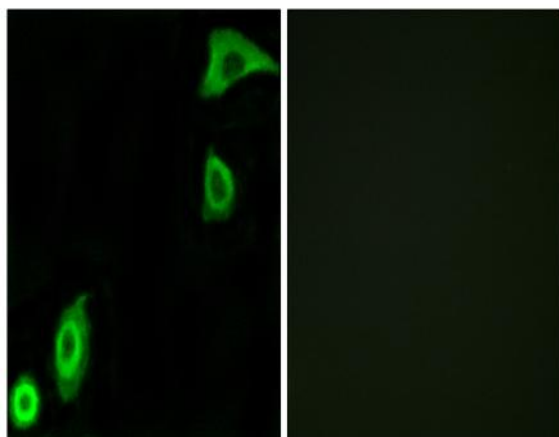
Catalog No :	YT4129
Reactivity :	Human;Mouse;Rat
Applications :	WB;IHC;IF;ELISA
Target :	Ribosomal Protein S20
Fields :	>>Ribosome;>>Coronavirus disease - COVID-19
Gene Name :	RPS20
Protein Name :	40S ribosomal protein S20
Human Gene Id :	6224
Human Swiss Prot No :	P60866
Mouse Gene Id :	67427
Mouse Swiss Prot No :	P60867
Rat Gene Id :	1.0036e+008
Rat Swiss Prot No :	P60868
Immunogen :	The antiserum was produced against synthesized peptide derived from human RPS20. AA range:31-80
Specificity :	Ribosomal Protein S20 Polyclonal Antibody detects endogenous levels of Ribosomal Protein S20 protein.
Formulation :	Liquid in PBS containing 50% glycerol, 0.5% BSA and 0.02% sodium azide.
Source :	Polyclonal, Rabbit,IgG
Dilution :	WB 1:500 - 1:2000. IHC 1:100 - 1:300. IF 1:200 - 1:1000. ELISA: 1:40000. Not yet tested in other applications.

Purification :	The antibody was affinity-purified from rabbit antiserum by affinity-chromatography using epitope-specific immunogen.
Concentration :	1 mg/ml
Storage Stability :	-15°C to -25°C/1 year(Do not lower than -25°C)
Observed Band :	13kD
Cell Pathway :	Ribosome;
Background :	Ribosomes, the organelles that catalyze protein synthesis, consist of a small 40S subunit and a large 60S subunit. Together these subunits are composed of 4 RNA species and approximately 80 structurally distinct proteins. This gene encodes a ribosomal protein that is a component of the 40S subunit. The protein belongs to the S10P family of ribosomal proteins. It is located in the cytoplasm. This gene is co-transcribed with the small nucleolar RNA gene U54, which is located in its second intron. As is typical for genes encoding ribosomal proteins, there are multiple processed pseudogenes of this gene dispersed through the genome. Two transcript variants encoding different isoforms have been identified for this gene. [provided by RefSeq, Apr 2009],
Function :	similarity:Belongs to the ribosomal protein S10P family.,
Subcellular Location :	Cytoplasm .
Expression :	Colon adenocarcinoma,Ovary,Placenta,Synovial membrane tissue,Testis,
Sort :	14496
No4 :	1
Host :	Rabbit
Modifications :	Unmodified

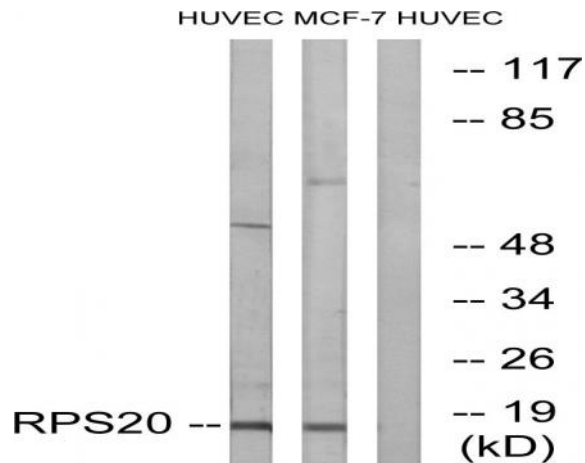
Products Images



Immunohistochemical analysis of paraffin-embedded Human brain. Antibody was diluted at 1:100(4° overnight). High-pressure and temperature Tris-EDTA,pH8.0 was used for antigen retrieval. Negative control (right) obtained from antibody was pre-absorbed by immunogen peptide.



Immunofluorescence analysis of A549 cells, using RPS20 Antibody. The picture on the right is blocked with the synthesized peptide.



Western blot analysis of lysates from HUVEC and MCF-7 cells, using RPS20 Antibody. The lane on the right is blocked with the synthesized peptide.