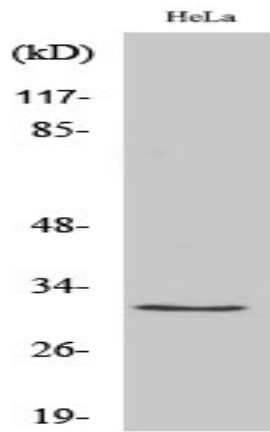


Ribosomal Protein S2 Polyclonal Antibody

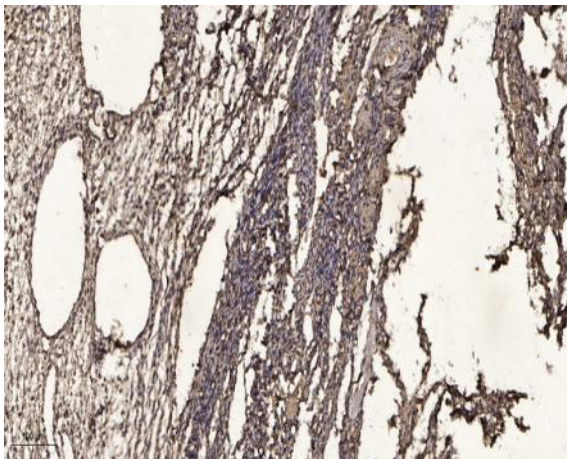
Catalog No :	YT4128
Reactivity :	Human;Mouse;Rat
Applications :	WB;ELISA;IHC
Target :	Ribosomal Protein S2
Fields :	>>Ribosome;>>Coronavirus disease - COVID-19
Gene Name :	RPS2
Protein Name :	40S ribosomal protein S2
Human Gene Id :	6187
Human Swiss Prot No :	P15880
Mouse Gene Id :	16898
Mouse Swiss Prot No :	P25444
Rat Gene Id :	83789
Rat Swiss Prot No :	P27952
Immunogen :	The antiserum was produced against synthesized peptide derived from human RPS2. AA range:244-293
Specificity :	Ribosomal Protein S2 Polyclonal Antibody detects endogenous levels of Ribosomal Protein S2 protein.
Formulation :	Liquid in PBS containing 50% glycerol, 0.5% BSA and 0.02% sodium azide.
Source :	Polyclonal, Rabbit,IgG
Dilution :	WB 1:500-2000;IHC 1:50-300; ELISA 2000-20000

Purification :	The antibody was affinity-purified from rabbit antiserum by affinity-chromatography using epitope-specific immunogen.
Concentration :	1 mg/ml
Storage Stability :	-15°C to -25°C/1 year(Do not lower than -25°C)
Observed Band :	31kD
Cell Pathway :	Ribosome;
Background :	Ribosomes, the organelles that catalyze protein synthesis, consist of a small 40S subunit and a large 60S subunit. Together these subunits are composed of 4 RNA species and approximately 80 structurally distinct proteins. This gene encodes a ribosomal protein that is a component of the 40S subunit. The protein belongs to the S5P family of ribosomal proteins. It is located in the cytoplasm. This gene shares sequence similarity with mouse LLRep3. It is co-transcribed with the small nucleolar RNA gene U64, which is located in its third intron. As is typical for genes encoding ribosomal proteins, there are multiple processed pseudogenes of this gene dispersed through the genome. [provided by RefSeq, Jul 2008],
Function :	similarity:Belongs to the ribosomal protein S5P family.,similarity:Contains 1 S5 DRBM domain.,
Subcellular Location :	nucleus,nucleoplasm,nucleolus,cytoplasm,cytosol,ribosome,cell-cell adherens junction,focal adhesion,small ribosomal subunit,membrane,cytosolic small ribosomal subunit,extracellular exosome,
Expression :	Brain,Cervix,Colon,Epithelium,Eye,Kidney,Lung,Mammary gland,Muscle,Placenta,Skin,Te
Sort :	14495
No4 :	1
Host :	Rabbit
Modifications :	Unmodified

Products Images



Western Blot analysis of various cells using Ribosomal Protein S2 Polyclonal Antibody diluted at 1:2000



Immunohistochemical analysis of paraffin-embedded human oophoroma. 1, Antibody was diluted at 1:200(4° overnight). 2, Tris-EDTA,pH9.0 was used for antigen retrieval. 3,Secondary antibody was diluted at 1:200(room temperature, 45min).