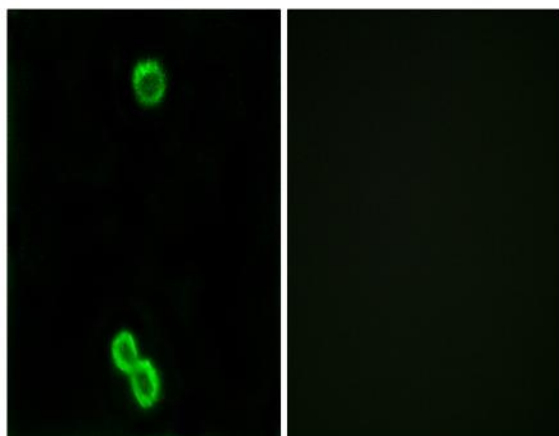


Ribosomal Protein L3L Polyclonal Antibody

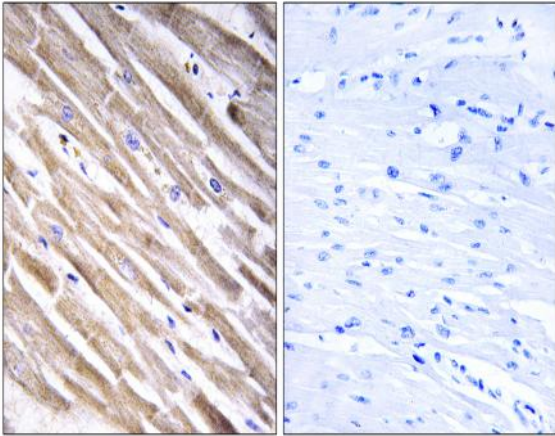
Catalog No :	YT4115
Reactivity :	Human;Mouse
Applications :	IHC;IF;ELISA
Target :	Ribosomal Protein L3L
Fields :	>>Ribosome;>>Coronavirus disease - COVID-19
Gene Name :	RPL3L
Protein Name :	60S ribosomal protein L3-like
Human Gene Id :	6123
Human Swiss Prot No :	Q92901
Immunogen :	The antiserum was produced against synthesized peptide derived from human RPL3L. AA range:211-260
Specificity :	Ribosomal Protein L3L Polyclonal Antibody detects endogenous levels of Ribosomal Protein L3L protein.
Formulation :	Liquid in PBS containing 50% glycerol, 0.5% BSA and 0.02% sodium azide.
Source :	Polyclonal, Rabbit,IgG
Dilution :	IHC 1:100 - 1:300. IF 1:200 - 1:1000. ELISA: 1:40000. Not yet tested in other applications.
Purification :	The antibody was affinity-purified from rabbit antiserum by affinity-chromatography using epitope-specific immunogen.
Concentration :	1 mg/ml
Storage Stability :	-15°C to -25°C/1 year(Do not lower than -25°C)

Molecularweight :	46kD
Cell Pathway :	Ribosome;
Background :	This gene encodes a protein that shares sequence similarity with ribosomal protein L3. The protein belongs to the L3P family of ribosomal proteins. Unlike the ubiquitous expression of ribosomal protein genes, this gene has a tissue-specific pattern of expression, with the highest levels of expression in skeletal muscle and heart. It is not currently known whether the encoded protein is a functional ribosomal protein or whether it has evolved a function that is independent of the ribosome. [provided by RefSeq, Jul 2008],
Function :	similarity:Belongs to the ribosomal protein L3P family.,
Subcellular Location :	cytosol,ribosome,membrane,cytosolic large ribosomal subunit,
Expression :	Heart muscle,PNS,
Sort :	14483
No4 :	1
Host :	Rabbit
Modifications :	Unmodified

Products Images



Immunofluorescence analysis of MCF7 cells, using RPL3L Antibody. The picture on the right is blocked with the synthesized peptide.



Immunohistochemistry analysis of paraffin-embedded human heart tissue, using RPL3L Antibody. The picture on the right is blocked with the synthesized peptide.