

## SMF Polyclonal Antibody

<b>Catalog No :</b>	YT4341
<b>Reactivity :</b>	Human;Rat;Mouse;
<b>Applications :</b>	IHC;IF;ELISA
<b>Target :</b>	SMF
<b>Gene Name :</b>	HMGXB3
<b>Protein Name :</b>	HMG domain-containing protein 3
<b>Human Gene Id :</b>	22993
<b>Human Swiss Prot No :</b>	Q12766
<b>Immunogen :</b>	The antiserum was produced against synthesized peptide derived from human HMGXB3. AA range:131-180
<b>Specificity :</b>	SMF Polyclonal Antibody detects endogenous levels of SMF protein.
<b>Formulation :</b>	Liquid in PBS containing 50% glycerol, 0.5% BSA and 0.02% sodium azide.
<b>Source :</b>	Polyclonal, Rabbit,IgG
<b>Dilution :</b>	IHC 1:100 - 1:300. ELISA: 1:20000.. IF 1:50-200
<b>Purification :</b>	The antibody was affinity-purified from rabbit antiserum by affinity-chromatography using epitope-specific immunogen.
<b>Concentration :</b>	1 mg/ml
<b>Storage Stability :</b>	-15°C to -25°C/1 year(Do not lower than -25°C)
<b>Molecularweight :</b>	168kD
<b>Background :</b>	This gene is one of the non-canonical high mobility group (HMG) genes. The encoded protein contains an HMG-box domain found in DNA binding proteins

such as transcription factors and chromosomal proteins. [provided by RefSeq, Aug 2011],

**Function :**

similarity:Contains 1 HMG box DNA-binding domain.,

**Subcellular Location :**

Nucleus .

**Expression :**

Bone marrow,Brain,Liver,Lymph,Muscle,Placenta,

**Sort :**

16444

**No4 :**

1

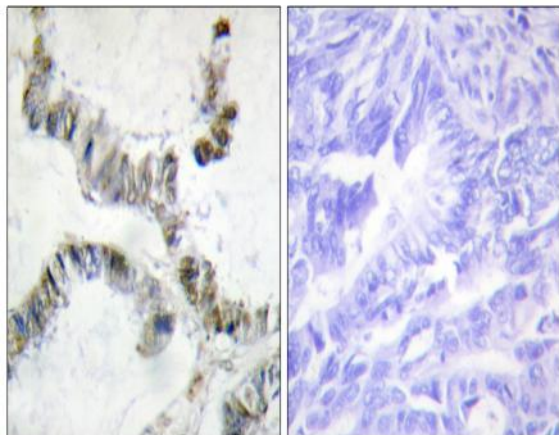
**Host :**

Rabbit

**Modifications :**

Unmodified

## Products Images



Immunohistochemistry analysis of paraffin-embedded human colon carcinoma, using SMF Antibody. The picture on the right is blocked with the synthesized peptide.