

**Ribosomal Protein L37 Polyclonal Antibody**

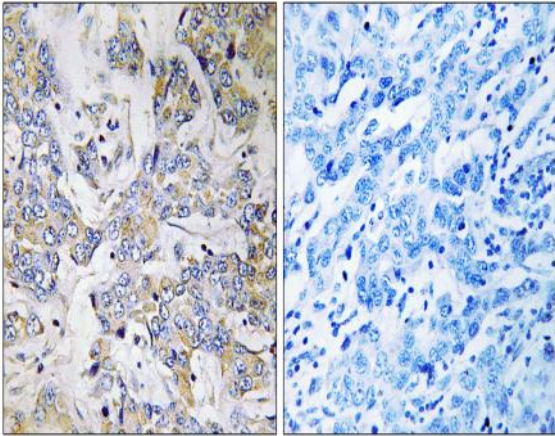
<b>Catalog No :</b>	YT4111
<b>Reactivity :</b>	Human;Mouse;Rat
<b>Applications :</b>	IHC;IF;ELISA
<b>Target :</b>	Ribosomal Protein L37
<b>Fields :</b>	>>Ribosome;>>Coronavirus disease - COVID-19
<b>Gene Name :</b>	RPL37
<b>Protein Name :</b>	60S ribosomal protein L37
<b>Human Gene Id :</b>	6167
<b>Human Swiss Prot No :</b>	P61927
<b>Mouse Gene Id :</b>	1.00503e+008
<b>Mouse Swiss Prot No :</b>	Q9D823
<b>Rat Gene Id :</b>	1.00361e+008
<b>Rat Swiss Prot No :</b>	P61928
<b>Immunogen :</b>	The antiserum was produced against synthesized peptide derived from human RPL37. AA range:21-70
<b>Specificity :</b>	Ribosomal Protein L37 Polyclonal Antibody detects endogenous levels of Ribosomal Protein L37 protein.
<b>Formulation :</b>	Liquid in PBS containing 50% glycerol, 0.5% BSA and 0.02% sodium azide.
<b>Source :</b>	Polyclonal, Rabbit,IgG
<b>Dilution :</b>	IHC 1:100 - 1:300. ELISA: 1:10000.. IF 1:50-200

---

<b>Purification :</b>	The antibody was affinity-purified from rabbit antiserum by affinity-chromatography using epitope-specific immunogen.
<b>Concentration :</b>	1 mg/ml
<b>Storage Stability :</b>	-15°C to -25°C/1 year(Do not lower than -25°C)
<b>Molecularweight :</b>	11kD
<b>Cell Pathway :</b>	Ribosome;
<b>Background :</b>	Ribosomes, the organelles that catalyze protein synthesis, consist of a small 40S subunit and a large 60S subunit. Together these subunits are composed of 4 RNA species and approximately 80 structurally distinct proteins. This gene encodes a ribosomal protein that is a component of the 60S subunit. The protein belongs to the L37E family of ribosomal proteins. It is located in the cytoplasm. The protein contains a C2C2-type zinc finger-like motif. As is typical for genes encoding ribosomal proteins, there are multiple processed pseudogenes of this gene dispersed through the genome. [provided by RefSeq, Jul 2008],
<b>Function :</b>	cofactor: Binds 1 zinc ion per subunit., function: Binds to the 23S rRNA., similarity: Belongs to the ribosomal protein L37e family.,
<b>Subcellular Location :</b>	cytosol, ribosome, cytosolic large ribosomal subunit,
<b>Expression :</b>	Colon, Lung, Lymphoma, Ovary, Trachea,
<b>Sort :</b>	14479
<b>No4 :</b>	1
<b>Host :</b>	Rabbit
<b>Modifications :</b>	Unmodified

---

## Products Images



Immunohistochemistry analysis of paraffin-embedded human breast carcinoma tissue, using RPL37 Antibody. The picture on the right is blocked with the synthesized peptide.