

## Ribosomal Protein L36 Polyclonal Antibody

<b>Catalog No :</b>	YT4110
<b>Reactivity :</b>	Human;Mouse;Rat
<b>Applications :</b>	WB;IHC;IF;ELISA
<b>Target :</b>	Ribosomal Protein L36
<b>Fields :</b>	>>Ribosome;>>Coronavirus disease - COVID-19
<b>Gene Name :</b>	RPL36
<b>Protein Name :</b>	60S ribosomal protein L36
<b>Human Gene Id :</b>	25873
<b>Human Swiss Prot No :</b>	Q9Y3U8
<b>Mouse Swiss Prot No :</b>	P47964
<b>Rat Gene Id :</b>	58927
<b>Rat Swiss Prot No :</b>	P39032
<b>Immunogen :</b>	The antiserum was produced against synthesized peptide derived from human RPL36. AA range:51-100
<b>Specificity :</b>	Ribosomal Protein L36 Polyclonal Antibody detects endogenous levels of Ribosomal Protein L36 protein.
<b>Formulation :</b>	Liquid in PBS containing 50% glycerol, 0.5% BSA and 0.02% sodium azide.
<b>Source :</b>	Polyclonal, Rabbit,IgG
<b>Dilution :</b>	WB 1:500 - 1:2000. IHC 1:100 - 1:300. IF 1:200 - 1:1000. ELISA: 1:40000. Not yet tested in other applications.
<b>Purification :</b>	The antibody was affinity-purified from rabbit antiserum by affinity-

chromatography using epitope-specific immunogen.

---

**Concentration :** 1 mg/ml

---

**Storage Stability :** -15°C to -25°C/1 year(Do not lower than -25°C)

---

**Observed Band :** 12kD

---

**Cell Pathway :** Ribosome;

---

**Background :** Ribosomes, the organelles that catalyze protein synthesis, consist of a small 40S subunit and a large 60S subunit. Together these subunits are composed of 4 RNA species and approximately 80 structurally distinct proteins. This gene encodes a ribosomal protein that is a component of the 60S subunit. The protein belongs to the L36E family of ribosomal proteins. It is located in the cytoplasm. Transcript variants derived from alternative splicing exist; they encode the same protein. As is typical for genes encoding ribosomal proteins, there are multiple processed pseudogenes of this gene dispersed through the genome. [provided by RefSeq, Jul 2008],

---

**Function :** caution:Could be the product of a pseudogene.,similarity:Belongs to the ribosomal protein L36e family.,

---

**Subcellular Location :** Cytoplasm, cytosol . Cytoplasm . Detected on cytosolic polysomes (PubMed:25957688). .

---

**Expression :** Blood,Kidney,Lung carcinoma,Skin,Umbilical cord blood,

---

**Sort :** 14478

---

**No4 :** 1

---

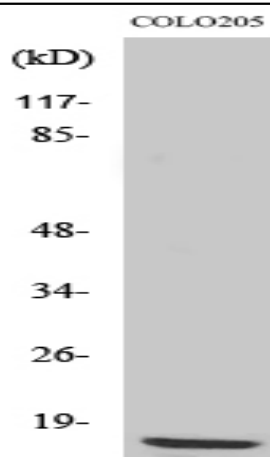
**Host :** Rabbit

---

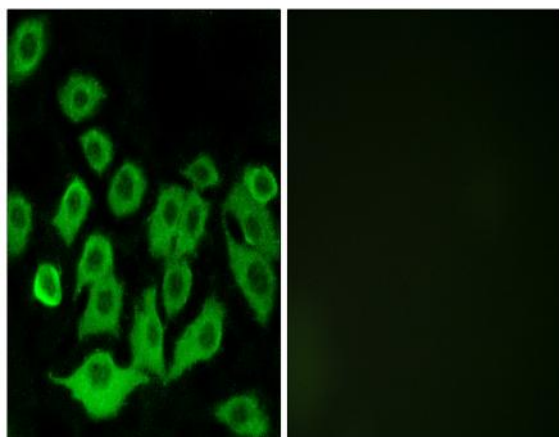
**Modifications :** Unmodified

---

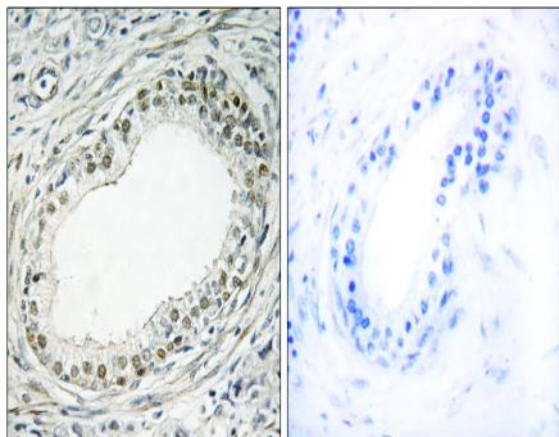
## Products Images



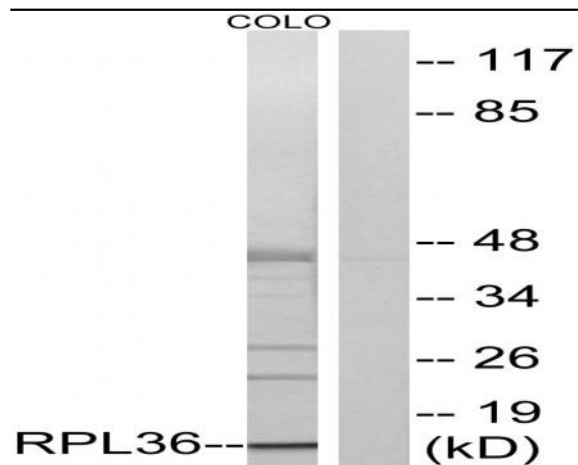
Western Blot analysis of various cells using Ribosomal Protein L36 Polyclonal Antibody diluted at 1:500



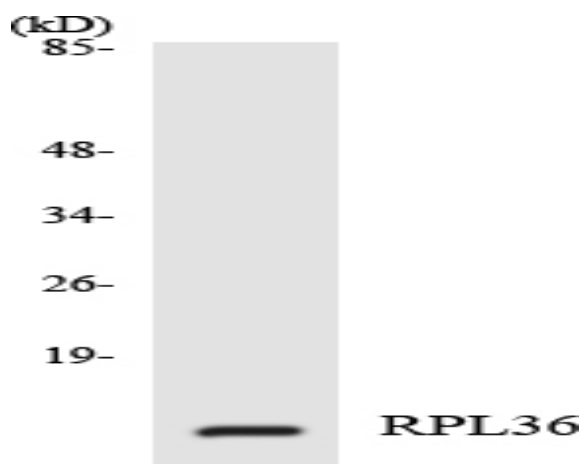
Immunofluorescence analysis of A549 cells, using RPL36 Antibody. The picture on the right is blocked with the synthesized peptide.



Immunohistochemistry analysis of paraffin-embedded human prostate carcinoma tissue, using RPL36 Antibody. The picture on the right is blocked with the synthesized peptide.



Western blot analysis of lysates from COLO cells, using RPL36 Antibody. The lane on the right is blocked with the synthesized peptide.



Western blot analysis of the lysates from 293 cells using RPL36 antibody.