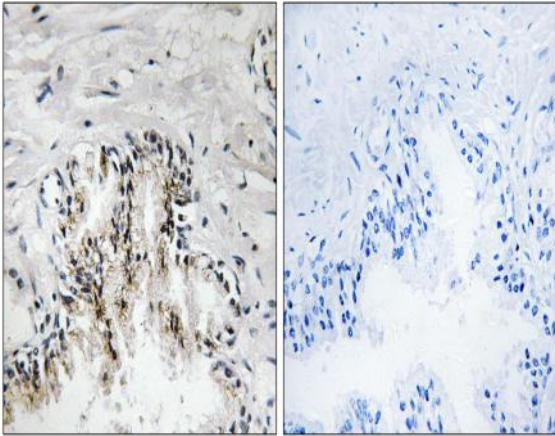


Ribosomal Protein L31 Polyclonal Antibody

| | |
|------------------------------|---|
| Catalog No : | YT4107 |
| Reactivity : | Human;Mouse;Rat |
| Applications : | WB;IHC;IF;ELISA |
| Target : | Ribosomal Protein L31 |
| Fields : | >>Ribosome;>>Coronavirus disease - COVID-19 |
| Gene Name : | RPL31 |
| Protein Name : | 60S ribosomal protein L31 |
| Human Gene Id : | 6160 |
| Human Swiss Prot No : | P62899 |
| Mouse Gene Id : | 1.00043e+008 |
| Mouse Swiss Prot No : | P62900 |
| Rat Gene Id : | 64298 |
| Rat Swiss Prot No : | P62902 |
| Immunogen : | The antiserum was produced against synthesized peptide derived from human RPL31. AA range:61-110 |
| Specificity : | Ribosomal Protein L31 Polyclonal Antibody detects endogenous levels of Ribosomal Protein L31 protein. |
| Formulation : | Liquid in PBS containing 50% glycerol, 0.5% BSA and 0.02% sodium azide. |
| Source : | Polyclonal, Rabbit,IgG |
| Dilution : | WB 1:500-2000 IHC 1:100 - 1:300. ELISA: 1:40000. IF 1:50-200 |

| | |
|-------------------------------|---|
| Purification : | The antibody was affinity-purified from rabbit antiserum by affinity-chromatography using epitope-specific immunogen. |
| Concentration : | 1 mg/ml |
| Storage Stability : | -15°C to -25°C/1 year(Do not lower than -25°C) |
| Molecularweight : | 14kD |
| Cell Pathway : | Ribosome; |
| Background : | Ribosomes, the organelles that catalyze protein synthesis, consist of a small 40S subunit and a large 60S subunit. Together these subunits are composed of 4 RNA species and approximately 80 structurally distinct proteins. This gene encodes a ribosomal protein that is a component of the 60S subunit. The protein belongs to the L31E family of ribosomal proteins. It is located in the cytoplasm. Higher levels of expression of this gene in familial adenomatous polyps compared to matched normal tissues have been observed. As is typical for genes encoding ribosomal proteins, there are multiple processed pseudogenes of this gene dispersed through the genome. Alternatively spliced transcript variants encoding distinct isoforms have been found for this gene. [provided by RefSeq, Jul 2008], |
| Function : | similarity:Belongs to the ribosomal protein L31e family., |
| Subcellular Location : | cytosol,ribosome,focal adhesion,membrane,cytosolic large ribosomal subunit,extracellular exosome, |
| Expression : | Brain,Epithelium,Liver,Prostate, |
| Tag : | hot |
| Sort : | 14475 |
| No4 : | 1 |
| Host : | Rabbit |
| Modifications : | Unmodified |

Products Images



Immunohistochemistry analysis of paraffin-embedded human prostate carcinoma tissue, using RPL31 Antibody. The picture on the right is blocked with the synthesized peptide.