

Ribosomal Protein L26L Polyclonal Antibody

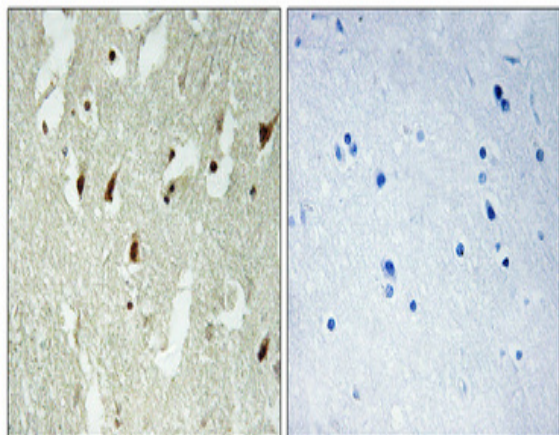
Catalog No :	YT4102
Reactivity :	Human;Mouse;Rat
Applications :	WB;IHC;IF;ELISA
Target :	Ribosomal Protein L26L
Fields :	>>Ribosome;>>Coronavirus disease - COVID-19
Gene Name :	RPL26L1
Protein Name :	60S ribosomal protein L26-like 1
Human Gene Id :	51121
Human Swiss Prot No :	Q9UNX3
Immunogen :	The antiserum was produced against synthesized peptide derived from human RPL26L. AA range:96-145
Specificity :	Ribosomal Protein L26L Polyclonal Antibody detects endogenous levels of Ribosomal Protein L26L protein.
Formulation :	Liquid in PBS containing 50% glycerol, 0.5% BSA and 0.02% sodium azide.
Source :	Polyclonal, Rabbit,IgG
Dilution :	WB 1:500 - 1:2000. IHC 1:100 - 1:300. ELISA: 1:40000.. IF 1:50-200
Purification :	The antibody was affinity-purified from rabbit antiserum by affinity-chromatography using epitope-specific immunogen.
Concentration :	1 mg/ml
Storage Stability :	-15°C to -25°C/1 year(Do not lower than -25°C)
Observed Band :	20kD

Cell Pathway :	Ribosome;
Background :	This gene encodes a protein that shares high sequence similarity with ribosomal protein L26. Alternative splicing results in multiple transcript variants encoding the same protein. [provided by RefSeq, Dec 2015],
Function :	similarity:Belongs to the ribosomal protein L24P family.,
Subcellular Location :	cytosol,large ribosomal subunit,cytosolic large ribosomal subunit,extracellular exosome,
Expression :	Lung,Umbilical cord blood,
Sort :	14470
No4 :	1
Host :	Rabbit
Modifications :	Unmodified

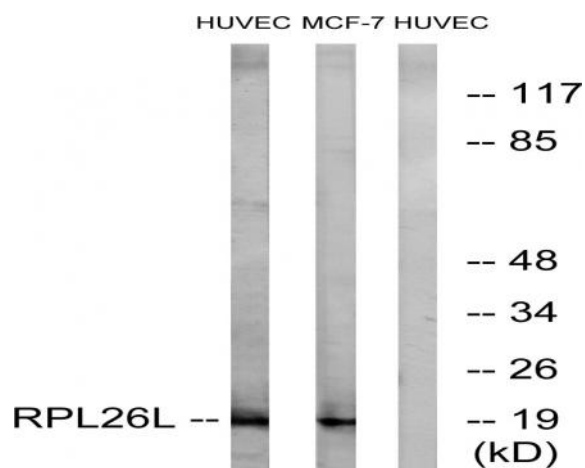
Products Images



Western Blot analysis of various cells using Ribosomal Protein L26L Polyclonal Antibody diluted at 1:2000



Immunohistochemical analysis of paraffin-embedded Human brain. Antibody was diluted at 1:100(4° overnight). High-pressure and temperature Tris-EDTA,pH8.0 was used for antigen retrieval. Negative control (right) obtained from antibody was pre-absorbed by immunogen peptide.



Western blot analysis of lysates from HUVEC and MCF-7 cells, using RPL26L Antibody. The lane on the right is blocked with the synthesized peptide.