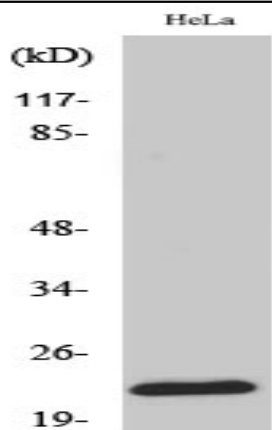


Ribosomal Protein L18 Polyclonal Antibody

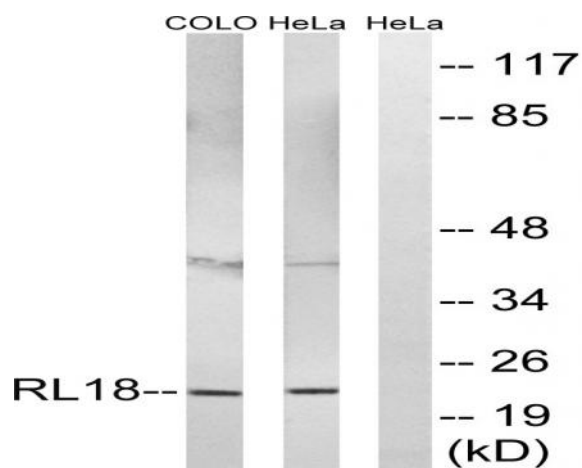
Catalog No :	YT4099
Reactivity :	Human;Mouse;Rat
Applications :	WB;IHC;IF;ELISA
Target :	Ribosomal Protein L18
Fields :	>>Ribosome;>>Coronavirus disease - COVID-19
Gene Name :	RPL18
Protein Name :	60S ribosomal protein L18
Human Gene Id :	6141
Human Swiss Prot No :	Q07020
Mouse Gene Id :	19899
Mouse Swiss Prot No :	P35980
Rat Gene Id :	81766
Rat Swiss Prot No :	P12001
Immunogen :	The antiserum was produced against synthesized peptide derived from human RPL18. AA range:111-160
Specificity :	Ribosomal Protein L18 Polyclonal Antibody detects endogenous levels of Ribosomal Protein L18 protein.
Formulation :	Liquid in PBS containing 50% glycerol, 0.5% BSA and 0.02% sodium azide.
Source :	Polyclonal, Rabbit,IgG
Dilution :	WB 1:500 - 1:2000. IHC 1:100 - 1:300. ELISA: 1:40000.. IF 1:50-200

Purification :	The antibody was affinity-purified from rabbit antiserum by affinity-chromatography using epitope-specific immunogen.
Concentration :	1 mg/ml
Storage Stability :	-15°C to -25°C/1 year(Do not lower than -25°C)
Observed Band :	23kD
Cell Pathway :	Ribosome;
Background :	Ribosomes, the organelles that catalyze protein synthesis, consist of a small 40S subunit and a large 60S subunit. Together these subunits are composed of 4 RNA species and approximately 80 structurally distinct proteins. This gene encodes a member of the L18E family of ribosomal proteins that is a component of the 60S subunit. As is typical for genes encoding ribosomal proteins, there are multiple processed pseudogenes of this gene dispersed through the genome. Alternatively spliced transcript variants encoding multiple isoforms have been observed for this gene. [provided by RefSeq, Jul 2012],
Function :	similarity:Belongs to the ribosomal protein L18e family.,
Subcellular Location :	Cytoplasm, cytosol . Cytoplasm . Rough endoplasmic reticulum . Detected on cytosolic polysomes (PubMed:25957688). Detected in ribosomes that are associated with the rough endoplasmic reticulum (By similarity). .
Expression :	Brain,Colon,Epithelium,Lung,
Sort :	14467
No4 :	1
Host :	Rabbit
Modifications :	Unmodified

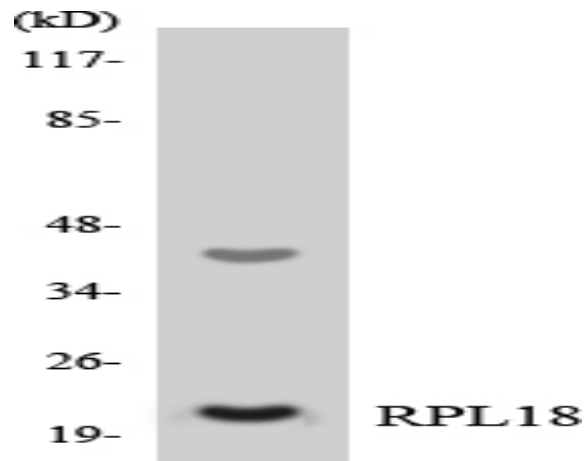
Products Images



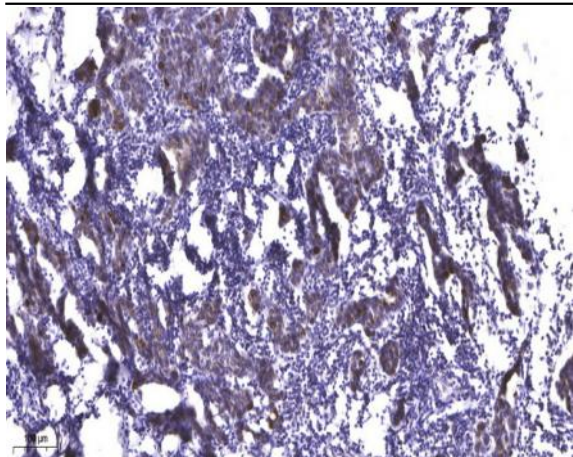
Western Blot analysis of various cells using Ribosomal Protein L18 Polyclonal Antibody diluted at 1:2000



Western blot analysis of lysates from HeLa and COLO cells, using RPL18 Antibody. The lane on the right is blocked with the synthesized peptide.



Western blot analysis of the lysates from HeLa cells using RPL18 antibody.



Immunohistochemical analysis of paraffin-embedded human Breast cancer. 1, Antibody was diluted at 1:200(4° overnight). 2, Tris-EDTA,pH9.0 was used for antigen retrieval. 3,Secondary antibody was diluted at 1:200(room temperature, 45min).