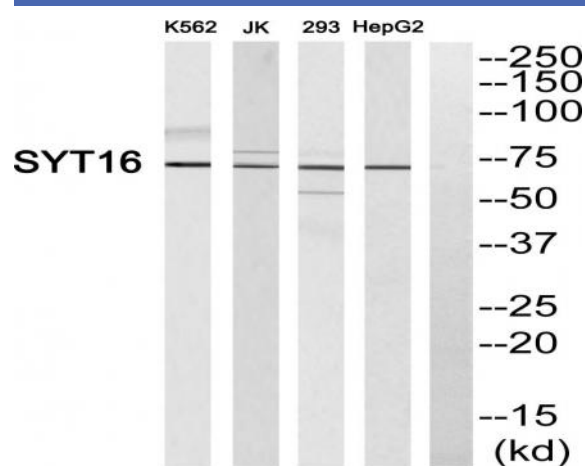


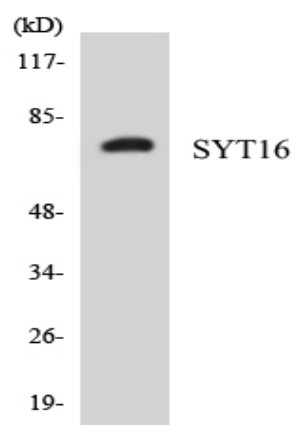
Synaptotagmin XVI Polyclonal Antibody

Catalog No :	YT4489
Reactivity :	Human;Rat;Mouse;
Applications :	WB;ELISA
Target :	Synaptotagmin XVI
Gene Name :	SYT16
Protein Name :	Synaptotagmin-16
Human Gene Id :	83851
Human Swiss Prot No :	Q17RD7
Mouse Swiss Prot No :	Q7TN83
Immunogen :	The antiserum was produced against synthesized peptide derived from human SYT16. AA range:231-280
Specificity :	Synaptotagmin XVI Polyclonal Antibody detects endogenous levels of Synaptotagmin XVI protein.
Formulation :	Liquid in PBS containing 50% glycerol, 0.5% BSA and 0.02% sodium azide.
Source :	Polyclonal, Rabbit,IgG
Dilution :	WB 1:500 - 1:2000. ELISA: 1:40000. Not yet tested in other applications.
Purification :	The antibody was affinity-purified from rabbit antiserum by affinity-chromatography using epitope-specific immunogen.
Concentration :	1 mg/ml
Storage Stability :	-15°C to -25°C/1 year(Do not lower than -25°C)
Observed Band :	72kD

Background :	function:May be involved in the trafficking and exocytosis of secretory vesicles in non-neuronal tissues. Is Ca(2+)-independent.,sequence caution:Translated as Gln.,similarity:Belongs to the synaptotagmin family.,similarity:Contains 2 C2 domains.,subunit:Homodimer. Can also form heterodimers.,tissue specificity:Expressed in brain.,
Function :	function:May be involved in the trafficking and exocytosis of secretory vesicles in non-neuronal tissues. Is Ca(2+)-independent.,sequence caution:Translated as Gln.,similarity:Belongs to the synaptotagmin family.,similarity:Contains 2 C2 domains.,subunit:Homodimer. Can also form heterodimers.,tissue specificity:Expressed in brain.,
Subcellular Location :	plasma membrane,
Expression :	Expressed in brain.
Sort :	16816
No4 :	1
Host :	Rabbit
Modifications :	Unmodified

Products Images





Western blot analysis of the lysates from HepG2 cells using SYT16 antibody.