

## Rho GDI $\alpha$ Polyclonal Antibody

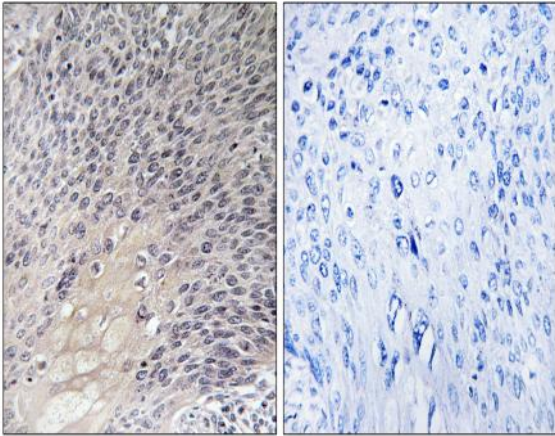
<b>Catalog No :</b>	YT4081
<b>Reactivity :</b>	Human;Mouse;Rat
<b>Applications :</b>	IHC;IF;ELISA
<b>Target :</b>	Rho GDI $\alpha$
<b>Fields :</b>	>>Neurotrophin signaling pathway;>>Vasopressin-regulated water reabsorption
<b>Gene Name :</b>	ARHGDI $\alpha$
<b>Protein Name :</b>	Rho GDP-dissociation inhibitor 1
<b>Human Gene Id :</b>	396
<b>Human Swiss Prot No :</b>	P52565
<b>Mouse Gene Id :</b>	192662
<b>Mouse Swiss Prot No :</b>	Q99PT1
<b>Rat Gene Id :</b>	360678
<b>Rat Swiss Prot No :</b>	Q5XI73
<b>Immunogen :</b>	The antiserum was produced against synthesized peptide derived from human ARHGDI $\alpha$ . AA range:140-189
<b>Specificity :</b>	Rho GDI $\alpha$ Polyclonal Antibody detects endogenous levels of Rho GDI $\alpha$ protein.
<b>Formulation :</b>	Liquid in PBS containing 50% glycerol, 0.5% BSA and 0.02% sodium azide.
<b>Source :</b>	Polyclonal, Rabbit,IgG
<b>Dilution :</b>	IHC 1:100 - 1:300. ELISA: 1:10000.. IF 1:50-200

---

<b>Purification :</b>	The antibody was affinity-purified from rabbit antiserum by affinity-chromatography using epitope-specific immunogen.
<b>Concentration :</b>	1 mg/ml
<b>Storage Stability :</b>	-15°C to -25°C/1 year(Do not lower than -25°C)
<b>Molecularweight :</b>	23kD
<b>Cell Pathway :</b>	Neurotrophin;
<b>Background :</b>	This gene encodes a protein that plays a key role in the regulation of signaling through Rho GTPases. The encoded protein inhibits the disassociation of Rho family members from GDP (guanine diphosphate), thereby maintaining these factors in an inactive state. Activity of this protein is important in a variety of cellular processes, and expression of this gene may be altered in tumors. Mutations in this gene have been found in individuals with nephrotic syndrome, type 8. Alternate splicing results in multiple transcript variants. [provided by RefSeq, Jul 2014],
<b>Function :</b>	function:Regulates the GDP/GTP exchange reaction of the Rho proteins by inhibiting the dissociation of GDP from them, and the subsequent binding of GTP to them.,similarity:Belongs to the Rho GDI family.,subunit:Monomer.,
<b>Subcellular Location :</b>	Cytoplasm .
<b>Expression :</b>	Brain,Cajal-Retzius cell,Colon,Epithelium,Fetal brain cortex,Lung,M
<b>Sort :</b>	14447
<b>No4 :</b>	1
<b>Host :</b>	Rabbit
<b>Modifications :</b>	Unmodified

---

## Products Images



Immunohistochemistry analysis of paraffin-embedded human cervix carcinoma tissue, using ARHGDI1 Antibody. The picture on the right is blocked with the synthesized peptide.