

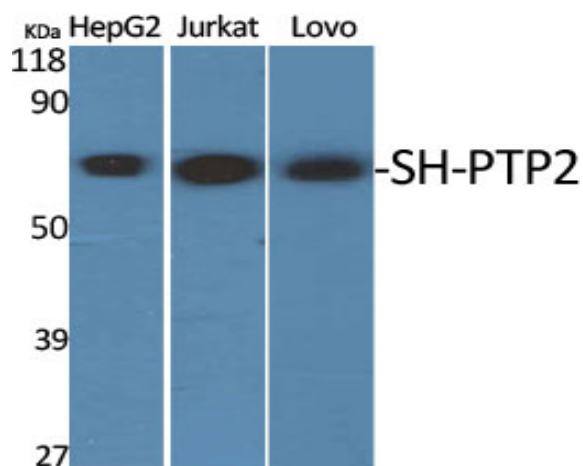
SH-PTP2 Polyclonal Antibody

Catalog No :	YT4293
Reactivity :	Human;Mouse;Rat
Applications :	WB;IHC;IF;ELISA
Target :	SH-PTP2
Fields :	>>Ras signaling pathway;>>Phospholipase D signaling pathway;>>Axon guidance;>>C-type lectin receptor signaling pathway;>>JAK-STAT signaling pathway;>>Natural killer cell mediated cytotoxicity;>>Leukocyte transendothelial migration;>>Neurotrophin signaling pathway;>>Adipocytokine signaling pathway;>>Insulin resistance;>>Epithelial cell signaling in Helicobacter pylori infection;>>Pathogenic Escherichia coli infection;>>Herpes simplex virus 1 infection;>>Proteoglycans in cancer;>>Chemical carcinogenesis - reactive oxygen species;>>Renal cell carcinoma;>>Chronic myeloid leukemia;>>PD-L1 expression and PD-1 checkpoint pathway in cancer
Gene Name :	PTPN11
Protein Name :	Tyrosine-protein phosphatase non-receptor type 11
Human Gene Id :	5781
Human Swiss Prot No :	Q06124
Mouse Gene Id :	19247
Mouse Swiss Prot No :	P35235
Rat Gene Id :	25622
Rat Swiss Prot No :	P41499
Immunogen :	The antiserum was produced against synthesized peptide derived from human SHP-2. AA range:546-595
Specificity :	SH-PTP2 Polyclonal Antibody detects endogenous levels of SH-PTP2 protein.

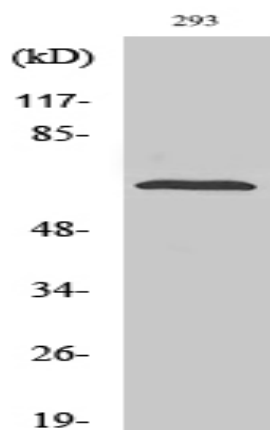
Formulation :	<u>Liquid in PBS containing 50% glycerol, 0.5% BSA and 0.02% sodium azide.</u>
Source :	<u>Polyclonal, Rabbit,IgG</u>
Dilution :	<u>WB 1:500 - 1:2000. IHC 1:100 - 1:300. ELISA: 1:20000.. IF 1:50-200</u>
Purification :	<u>The antibody was affinity-purified from rabbit antiserum by affinity-chromatography using epitope-specific immunogen.</u>
Concentration :	<u>1 mg/ml</u>
Storage Stability :	<u>-15°C to -25°C/1 year(Do not lower than -25°C)</u>
Observed Band :	<u>72kD</u>
Cell Pathway :	<u>Insulin Receptor; B Cell Receptor; MAPK; Protein_Acetylation</u>
Background :	<u>The protein encoded by this gene is a member of the protein tyrosine phosphatase (PTP) family. PTPs are known to be signaling molecules that regulate a variety of cellular processes including cell growth, differentiation, mitotic cycle, and oncogenic transformation. This PTP contains two tandem Src homology-2 domains, which function as phospho-tyrosine binding domains and mediate the interaction of this PTP with its substrates. This PTP is widely expressed in most tissues and plays a regulatory role in various cell signaling events that are important for a diversity of cell functions, such as mitogenic activation, metabolic control, transcription regulation, and cell migration. Mutations in this gene are a cause of Noonan syndrome as well as acute myeloid leukemia. [provided by RefSeq, Aug 2016],</u>
Function :	<u>catalytic activity:Protein tyrosine phosphate + H(2)O = protein tyrosine + phosphate.,disease:Defects in PTPN11 are a cause of juvenile myelomonocytic leukemia (JMML) [MIM:607785]. JMML is a pediatric myelodysplastic syndrome that constitutes approximately 30% of childhood cases of myelodysplastic syndrome (MDS) and 2% of leukemia. It is characterized by leukocytosis with tissue infiltration and in vitro hypersensitivity of myeloid progenitors to granulocyte-macrophage colony stimulating factor.,disease:Defects in PTPN11 are a cause of Noonan-like syndrome [MIM:163955]; also known as Noonan-like/multiple giant cell lesion syndrome. It is an autosomal dominant disorder characterized by Noonan features associates with giant cell lesions of bone and soft tissue.,disease:Defects in PTPN11 are the cause of LEOPARD syndrome [MIM:151100]. It is an autosomal dominant disorder allelic with Noonan</u>
Subcellular Location :	<u>Cytoplasm . Nucleus .</u>
Expression :	<u>Widely expressed, with highest levels in heart, brain, and skeletal muscle.</u>

Sort :	16321
No4 :	1
Host :	Rabbit
Modifications :	Unmodified

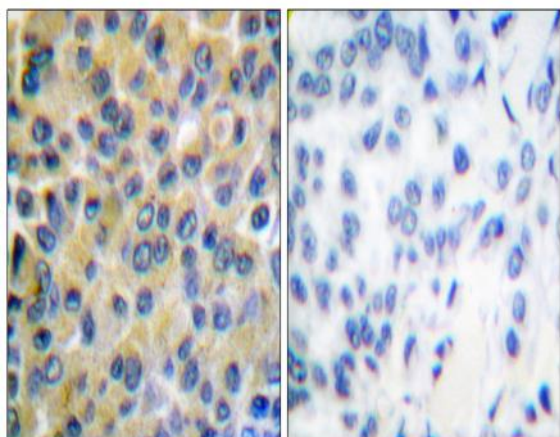
Products Images



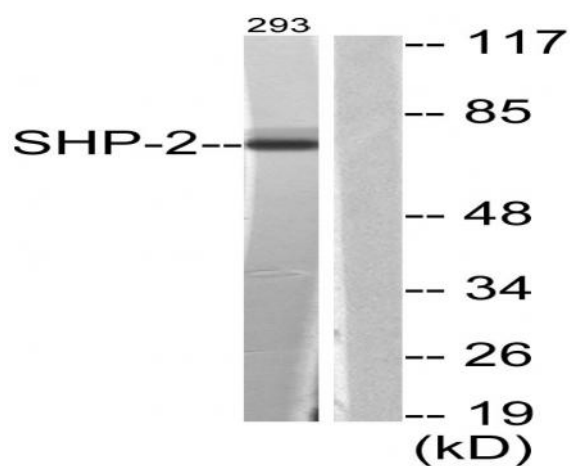
Western Blot analysis of various cells using SH-PTP2 Polyclonal Antibody diluted at 1:2000



Western Blot analysis of 293 cells using SH-PTP2 Polyclonal Antibody diluted at 1:2000



Immunohistochemistry analysis of paraffin-embedded human breast carcinoma tissue, using SHP-2 Antibody. The picture on the right is blocked with the synthesized peptide.



Western blot analysis of lysates from 293 cells, using SHP-2 Antibody. The lane on the right is blocked with the synthesized peptide.