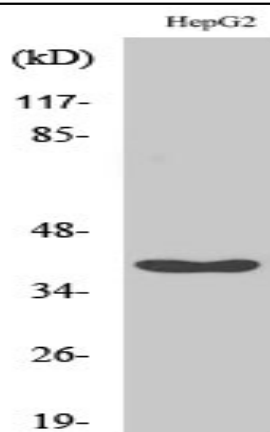


RFC3 Polyclonal Antibody

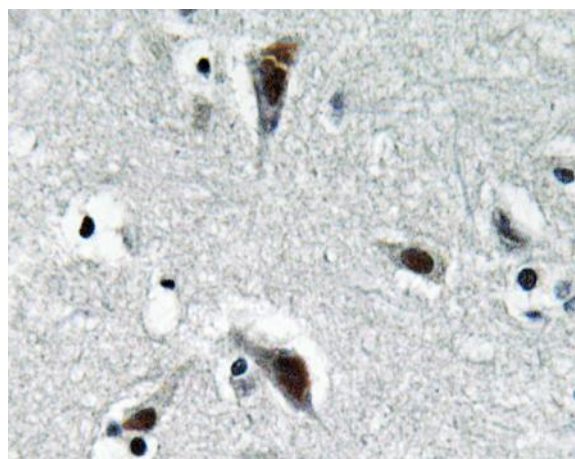
Catalog No :	YT4061
Reactivity :	Human;Mouse;Rat
Applications :	WB;IHC;IF;ELISA
Target :	RFC3
Fields :	>>DNA replication;>>Nucleotide excision repair;>>Mismatch repair
Gene Name :	RFC3
Protein Name :	Replication factor C subunit 3
Human Gene Id :	5983
Human Swiss Prot No :	P40938
Mouse Gene Id :	69263
Mouse Swiss Prot No :	Q8R323
Immunogen :	The antiserum was produced against synthesized peptide derived from human RFC3. AA range:178-227
Specificity :	RFC3 Polyclonal Antibody detects endogenous levels of RFC3 protein.
Formulation :	Liquid in PBS containing 50% glycerol, 0.5% BSA and 0.02% sodium azide.
Source :	Polyclonal, Rabbit,IgG
Dilution :	WB 1:500 - 1:2000. IHC 1:100 - 1:300. ELISA: 1:40000.. IF 1:50-200
Purification :	The antibody was affinity-purified from rabbit antiserum by affinity-chromatography using epitope-specific immunogen.
Concentration :	1 mg/ml

Storage Stability :	<u>-15°C to -25°C/1 year(Do not lower than -25°C)</u>
Observed Band :	<u>40kD</u>
Cell Pathway :	<u>DNA replication;Nucleotide excision repair;Mismatch repair;</u>
Background :	<u>The elongation of primed DNA templates by DNA polymerase delta and DNA polymerase epsilon requires the accessory proteins proliferating cell nuclear antigen (PCNA) and replication factor C (RFC). RFC, also named activator 1, is a protein complex consisting of five distinct subunits of 140, 40, 38, 37, and 36 kDa. This gene encodes the 38 kDa subunit. This subunit is essential for the interaction between the 140 kDa subunit and the core complex that consists of the 36, 37, and 40 kDa subunits. Alternatively spliced transcript variants encoding distinct isoforms have been described. [provided by RefSeq, Jul 2008],</u>
Function :	<u>function:The elongation of primed DNA templates by DNA polymerase delta and epsilon requires the action of the accessory proteins proliferating cell nuclear antigen (PCNA) and activator 1.,PTM:Phosphorylated upon DNA damage, probably by ATM or ATR.,similarity:Belongs to the activator 1 small subunits family.,subunit:Heterotetramer of subunits RFC2, RFC3, RFC4 and RFC5 that can form a complex either with RFC1 or with RAD17. The former interacts with PCNA in the presence of ATP, while the latter has ATPase activity but is not stimulated by PCNA.,</u>
Subcellular Location :	<u>Nucleus .</u>
Expression :	<u>Coronary artery,Placenta,</u>
Sort :	<u>14409</u>
No4 :	<u>1</u>
Host :	<u>Rabbit</u>
Modifications :	<u>Unmodified</u>

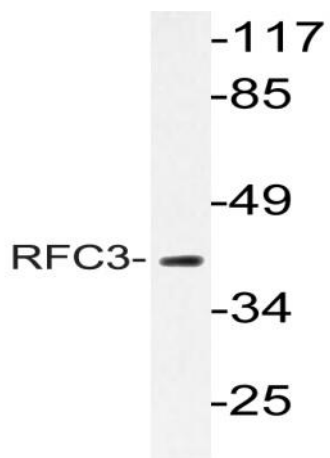
Products Images



Western Blot analysis of various cells using RFC3 Polyclonal Antibody cells nucleus extracted by Minute TM Cytoplasmic and Nuclear Fractionation kit (SC-003, Inventbiotech, MN, USA).



Immunohistochemistry analysis of RFC3 antibody in paraffin-embedded human brain tissue.



Western blot analysis of lysate from HepG2 cells, using RFC3 antibody.