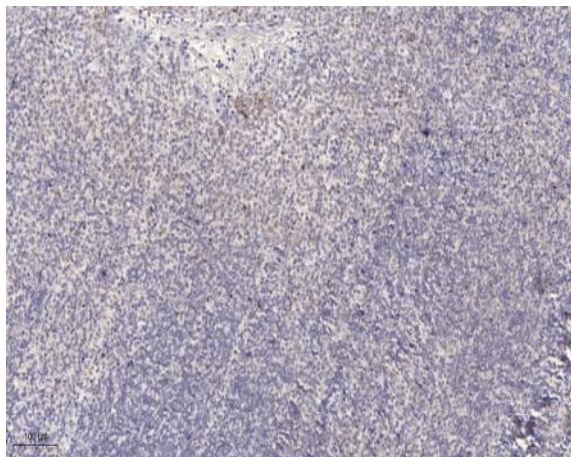


SH2D4A Polyclonal Antibody

Catalog No :	YT4277
Reactivity :	Human;Rat;Mouse;
Applications :	IHC;IF;ELISA
Target :	SH2D4A
Gene Name :	SH2D4A
Protein Name :	SH2 domain-containing protein 4A
Human Gene Id :	63898
Human Swiss Prot No :	Q9H788
Mouse Swiss Prot No :	Q9D7V1
Immunogen :	The antiserum was produced against synthesized peptide derived from human SH2D4A. AA range:180-220
Specificity :	SH2D4A Polyclonal Antibody detects endogenous levels of SH2D4A protein.
Formulation :	Liquid in PBS containing 50% glycerol, 0.5% BSA and 0.02% sodium azide.
Source :	Polyclonal, Rabbit,IgG
Dilution :	IHC 1:100 - 1:300. ELISA: 1:20000.. IF 1:50-200
Purification :	The antibody was affinity-purified from rabbit antiserum by affinity-chromatography using epitope-specific immunogen.
Concentration :	1 mg/ml
Storage Stability :	-15°C to -25°C/1 year(Do not lower than -25°C)
Molecularweight :	53kD

Background :	sequence caution:Translated as stop.,sequence caution:Translation N-terminally extended.,similarity:Contains 1 SH2 domain.,tissue specificity:Ubiquitously expressed. Aberrantly expressed in some cancers.,
Function :	sequence caution:Translated as stop.,sequence caution:Translation N-terminally extended.,similarity:Contains 1 SH2 domain.,tissue specificity:Ubiquitously expressed. Aberrantly expressed in some cancers.,
Subcellular Location :	Cytoplasm . Located at podocyte foot processes. .
Expression :	Ubiquitously expressed. Aberrantly expressed in some cancers.
Sort :	16284
No4 :	1
Host :	Rabbit
Modifications :	Unmodified

Products Images



Immunohistochemical analysis of paraffin-embedded human tonsil. 1, Antibody was diluted at 1:200(4° overnight). 2, Tris-EDTA,pH9.0 was used for antigen retrieval. 3,Secondary antibody was diluted at 1:200(room temperature, 30min).