

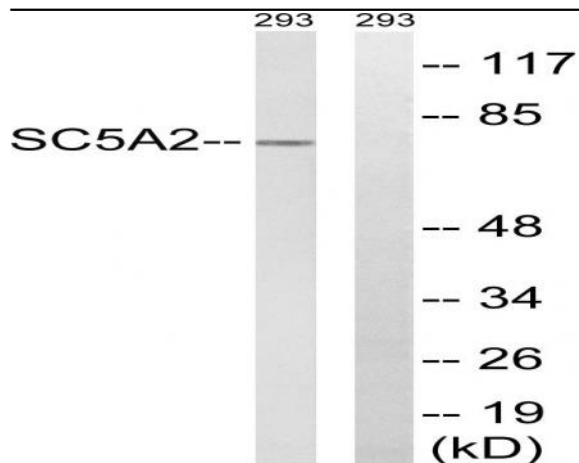
## SGLT-2 Polyclonal Antibody

<b>Catalog No :</b>	YT4274
<b>Reactivity :</b>	Human;Mouse;Rat
<b>Applications :</b>	WB;IHC
<b>Target :</b>	SGLT-2
<b>Gene Name :</b>	SLC5A2
<b>Protein Name :</b>	Sodium/glucose cotransporter 2
<b>Human Gene Id :</b>	6524
<b>Human Swiss Prot No :</b>	P31639
<b>Mouse Gene Id :</b>	246787
<b>Mouse Swiss Prot No :</b>	Q923I7
<b>Rat Gene Id :</b>	64522
<b>Rat Swiss Prot No :</b>	P53792
<b>Immunogen :</b>	The antiserum was produced against synthesized peptide derived from human SLC5A2. AA range:101-150
<b>Specificity :</b>	SGLT-2 Polyclonal Antibody detects endogenous levels of SGLT-2 protein.
<b>Formulation :</b>	Liquid in PBS containing 50% glycerol, 0.5% BSA and 0.02% sodium azide.
<b>Source :</b>	Polyclonal, Rabbit,IgG
<b>Dilution :</b>	WB 1:500-2000;IHC 1:50-300
<b>Purification :</b>	The antibody was affinity-purified from rabbit antiserum by affinity-chromatography using epitope-specific immunogen.

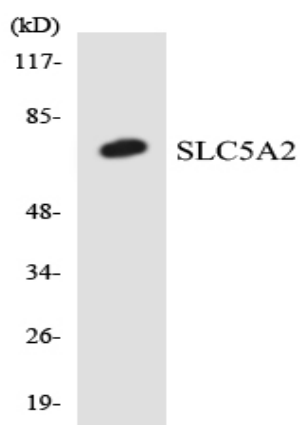
<b>Concentration :</b>	1 mg/ml
<b>Storage Stability :</b>	-15°C to -25°C/1 year(Do not lower than -25°C)
<b>Observed Band :</b>	73kD
<b>Background :</b>	This gene encodes a member of the sodium glucose cotransporter family which are sodium-dependent glucose transport proteins. The encoded protein is the major cotransporter involved in glucose reabsorption in the kidney. Mutations in this gene are associated with renal glucosuria. Two transcript variants, one protein-coding and one not, have been found for this gene. [provided by RefSeq, Feb 2015],
<b>Function :</b>	disease:Defects in SLC5A2 are the cause of renal glucosuria (GLYS1) [MIM:233100]. GLYS1 is an autosomal recessive disorder characterized by a normal fasting serum glucose concentration and persistent isolated glucosuria, with a normal glucose tolerance test.,function:Efficient substrate transport in mammalian kidney is provided by the concerted action of a low affinity high capacity and a high affinity low capacity Na(+)/glucose cotransporter arranged in series along kidney proximal tubules.,function:Sodium-dependent glucose transporter. Has a Na(+) to glucose coupling ratio of 1:1.,similarity:Belongs to the sodium:solute symporter (SSF) (TC 2.A.21) family.,
<b>Subcellular Location :</b>	Apical cell membrane ; Multi-pass membrane protein .
<b>Expression :</b>	Kidney,
<b>Tag :</b>	hot
<b>Sort :</b>	16278
<b>No4 :</b>	1
<b>Host :</b>	Rabbit
<b>Modifications :</b>	Unmodified

---

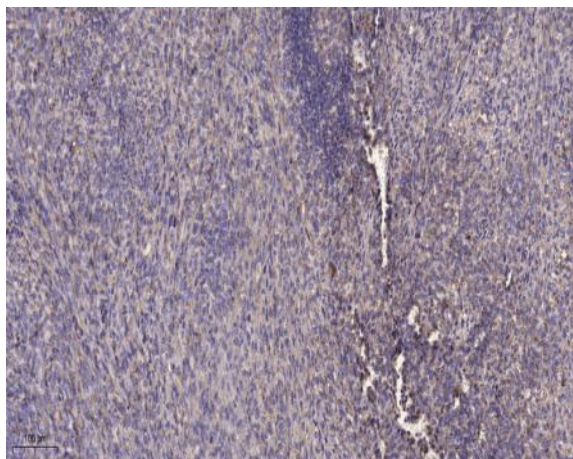
## Products Images



Western blot analysis of lysates from 293 cells, using SLC5A2 Antibody. The lane on the right is blocked with the synthesized peptide.



Western blot analysis of the lysates from Jurkat cells using SLC5A2 antibody.



Immunohistochemical analysis of paraffin-embedded human Colon cancer. 1, Antibody was diluted at 1:200(4° overnight). 2, Tris-EDTA,pH9.0 was used for antigen retrieval. 3,Secondary antibody was diluted at 1:200(room temperature, 45min).