

## Repetin Polyclonal Antibody

<b>Catalog No :</b>	YT4052
<b>Reactivity :</b>	Human;Mouse
<b>Applications :</b>	WB;IHC
<b>Target :</b>	Repetin
<b>Gene Name :</b>	RPTN
<b>Protein Name :</b>	Repetin
<b>Human Gene Id :</b>	126638
<b>Human Swiss Prot No :</b>	Q6XPR3
<b>Mouse Swiss Prot No :</b>	P97347
<b>Immunogen :</b>	The antiserum was produced against synthesized peptide derived from human RPTN. AA range:648-697
<b>Specificity :</b>	Repetin Polyclonal Antibody detects endogenous levels of Repetin protein.
<b>Formulation :</b>	Liquid in PBS containing 50% glycerol, 0.5% BSA and 0.02% sodium azide.
<b>Source :</b>	Polyclonal, Rabbit,IgG
<b>Dilution :</b>	WB 1:500-2000;IHC 1:50-300
<b>Purification :</b>	The antibody was affinity-purified from rabbit antiserum by affinity-chromatography using epitope-specific immunogen.
<b>Concentration :</b>	1 mg/ml
<b>Storage Stability :</b>	-15°C to -25°C/1 year(Do not lower than -25°C)
<b>Observed Band :</b>	90kD

**Background :** domain:Can be divided into a N-terminal domain with significant homology to S100-like calcium-binding proteins, a central domain containing a series of short tandem repeats, and two flanking segments with low homology to the consensus sequences of the central repeats.,function:Involved in the cornified cell envelope formation. Multifunctional epidermal matrix protein. Reversibly binds calcium.,PTM:Phosphorylated upon DNA damage, probably by ATM or ATR.,PTM:Potential substrate of transglutaminase. Some arginines are probably converted to citrullines by peptidylarginine deimidase.,similarity:Belongs to the S100-fused protein family.,similarity:Contains 2 EF-hand domains.,tissue specificity:Expression is scattered in the normal epidermis but strong in the acrosyringium, the inner hair root sheath and in the filiform papilli of the tongue.,

---

**Function :** domain:Can be divided into a N-terminal domain with significant homology to S100-like calcium-binding proteins, a central domain containing a series of short tandem repeats, and two flanking segments with low homology to the consensus sequences of the central repeats.,function:Involved in the cornified cell envelope formation. Multifunctional epidermal matrix protein. Reversibly binds calcium.,PTM:Phosphorylated upon DNA damage, probably by ATM or ATR.,PTM:Potential substrate of transglutaminase. Some arginines are probably converted to citrullines by peptidylarginine deimidase.,similarity:Belongs to the S100-fused protein family.,similarity:Contains 2 EF-hand domains.,tissue specificity:Expression is scattered in the normal epidermis but strong in the acrosyringium, the inner hair root sheath and in the filiform papilli of the tongue.,

---

**Subcellular Location :** Secreted, extracellular space, extracellular matrix.

---

**Expression :** Expression is scattered in the normal epidermis but strong in the acrosyringium, the inner hair root sheath and in the filiform papilli of the tongue.

---

**Sort :** 14386

---

**No4 :** 1

---

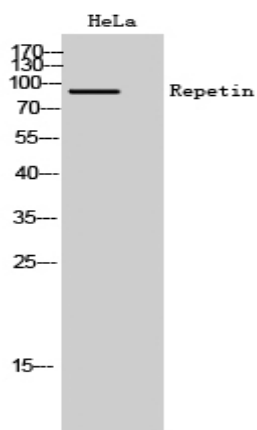
**Host :** Rabbit

---

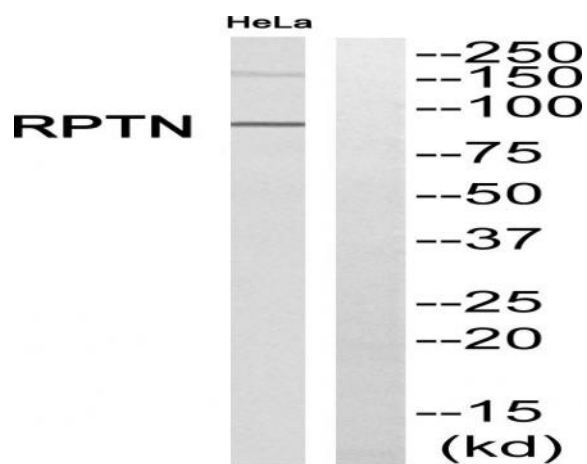
**Modifications :** Unmodified

---

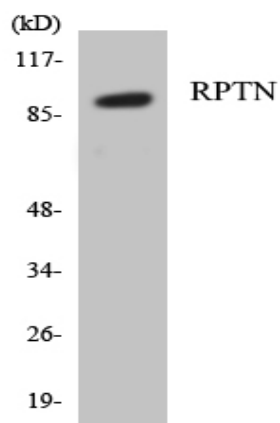
## Products Images



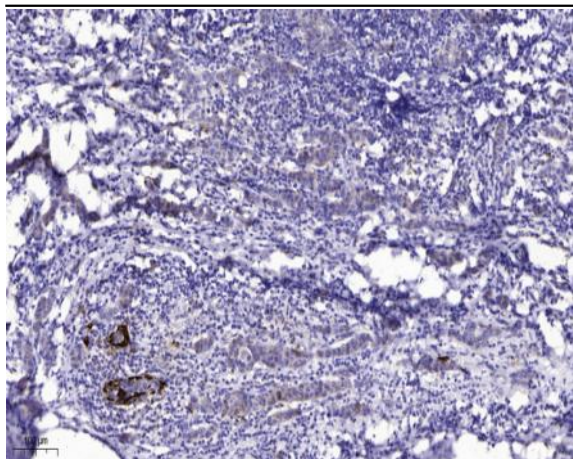
Western Blot analysis of HeLa cells using Repetin Polyclonal Antibody



Western blot analysis of RPTN Antibody. The lane on the right is blocked with the RPTN peptide.



Western blot analysis of the lysates from HepG2 cells using RPTN antibody.



Immunohistochemical analysis of paraffin-embedded human Breast cancer. 1, Antibody was diluted at 1:200(4° overnight). 2, Tris-EDTA,pH9.0 was used for antigen retrieval. 3,Secondary antibody was diluted at 1:200(room temperature, 45min).