

RECK Polyclonal Antibody

Catalog No :	YT4036
Reactivity :	Human;Mouse
Applications :	IHC;IF;WB;ELISA
Target :	RECK
Fields :	>>MicroRNAs in cancer
Gene Name :	RECK
Protein Name :	Reversion-inducing cysteine-rich protein with Kazal motifs
Human Gene Id :	8434
Human Swiss Prot No :	O95980
Mouse Gene Id :	53614
Mouse Swiss Prot No :	Q9Z0J1
Immunogen :	The antiserum was produced against synthesized peptide derived from human RECK. AA range:21-70
Specificity :	RECK Polyclonal Antibody detects endogenous levels of RECK protein.
Formulation :	Liquid in PBS containing 50% glycerol, 0.5% BSA and 0.02% sodium azide.
Source :	Polyclonal, Rabbit,IgG
Dilution :	WB 1:500-2000 IHC 1:100 - 1:300. IF 1:200 - 1:1000. ELISA: 1:20000. Not yet tested in other applications.
Purification :	The antibody was affinity-purified from rabbit antiserum by affinity-chromatography using epitope-specific immunogen.
Concentration :	1 mg/ml

Storage Stability : -15°C to -25°C/1 year(Do not lower than -25°C)

Observed Band : 110kD

Background :

The protein encoded by this gene is a cysteine-rich, extracellular protein with protease inhibitor-like domains whose expression is suppressed strongly in many tumors and cells transformed by various kinds of oncogenes. In normal cells, this membrane-anchored glycoprotein may serve as a negative regulator for matrix metalloproteinase-9, a key enzyme involved in tumor invasion and metastasis. Several transcript variants encoding different isoforms have been found for this gene. [provided by RefSeq, Oct 2015],

Function :

function:Negatively regulates matrix metalloproteinase-9 (MMP-9) by suppressing MMP-9 secretion and by direct inhibition of its enzymatic activity. RECK down-regulation by oncogenic signals may facilitate tumor invasion and metastasis. Appears to also regulate MMP-2 and MT1-MMP, which are involved in cancer progression.,PTM:N-glycosylated.,similarity:Contains 3 Kazal-like domains.,subunit:Interacts with MMP-9.,tissue specificity:Expressed in various tissues and untransformed cells. It is undetectable in tumor-derived cell lines and oncogenically transformed cells.,

Subcellular Location : Cell membrane ; Lipid-anchor, GPI-anchor .

Expression :

Expressed in various tissues and untransformed cells (PubMed:9789069). It is undetectable in tumor-derived cell lines and oncogenically transformed cells (PubMed:9789069).

Tag : hot

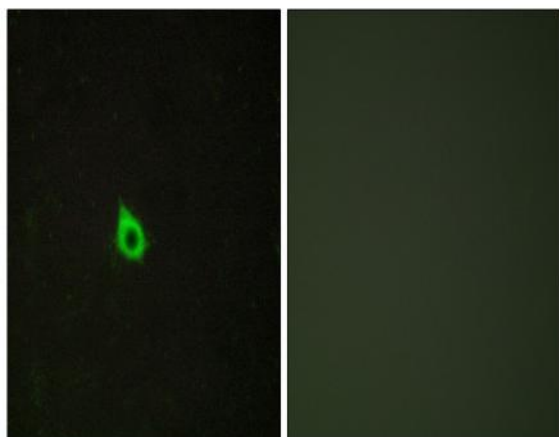
Sort : 14071

No4 : 1

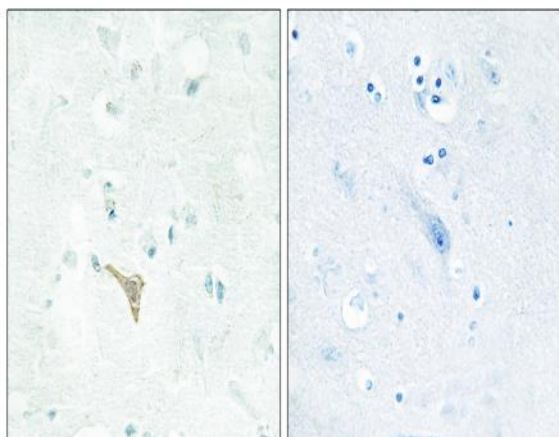
Host : Rabbit

Modifications : Unmodified

Products Images



Immunofluorescence analysis of HepG2 cells, using RECK Antibody. The picture on the right is blocked with the synthesized peptide.



Immunohistochemistry analysis of paraffin-embedded human brain tissue, using RECK Antibody. The picture on the right is blocked with the synthesized peptide.