

## RCC2 Polyclonal Antibody

<b>Catalog No :</b>	YT4031
<b>Reactivity :</b>	Human;Mouse
<b>Applications :</b>	WB;IHC;IF;ELISA
<b>Target :</b>	RCC2
<b>Gene Name :</b>	RCC2
<b>Protein Name :</b>	Protein RCC2
<b>Human Gene Id :</b>	55920
<b>Human Swiss Prot No :</b>	Q9P258
<b>Mouse Gene Id :</b>	108911
<b>Mouse Swiss Prot No :</b>	Q8BK67
<b>Immunogen :</b>	The antiserum was produced against synthesized peptide derived from human RCC2. AA range:473-522
<b>Specificity :</b>	RCC2 Polyclonal Antibody detects endogenous levels of RCC2 protein.
<b>Formulation :</b>	Liquid in PBS containing 50% glycerol, 0.5% BSA and 0.02% sodium azide.
<b>Source :</b>	Polyclonal, Rabbit,IgG
<b>Dilution :</b>	WB 1:500 - 1:2000. IHC 1:100 - 1:300. ELISA: 1:5000.. IF 1:50-200
<b>Purification :</b>	The antibody was affinity-purified from rabbit antiserum by affinity-chromatography using epitope-specific immunogen.
<b>Concentration :</b>	1 mg/ml
<b>Storage Stability :</b>	-15°C to -25°C/1 year(Do not lower than -25°C)

---

**Observed Band :** 56kD

---

**Background :** function:Required for completion of mitosis and cytokinesis. May function as a guanine nucleotide exchange factor for the small GTPase RAC1.,PTM:Phosphorylated upon DNA damage, probably by ATM or ATR.,similarity:Contains 7 RCC1 repeats.,subcellular location:Appears in the nucleus at G2, then concentrates at the inner centromere region of chromosomes during prophase. Redistributes to the midzone of the mitotic spindle during anaphase. Here, the protein covers the entire equatorial diameter from cortex to cortex.,subunit:Binds preferentially to the nucleotide-free form of RAC1. Interacts with microtubules.,

---

**Function :** function:Required for completion of mitosis and cytokinesis. May function as a guanine nucleotide exchange factor for the small GTPase RAC1.,PTM:Phosphorylated upon DNA damage, probably by ATM or ATR.,similarity:Contains 7 RCC1 repeats.,subcellular location:Appears in the nucleus at G2, then concentrates at the inner centromere region of chromosomes during prophase. Redistributes to the midzone of the mitotic spindle during anaphase. Here, the protein covers the entire equatorial diameter from cortex to cortex.,subunit:Binds preferentially to the nucleotide-free form of RAC1. Interacts with microtubules.,

---

**Subcellular Location :** Nucleus, nucleolus . Nucleus . Cytoplasm, cytoskeleton . Chromosome, centromere . Cytoplasm, cytoskeleton, spindle . Chromosome . Midbody . Cell membrane ; Peripheral membrane protein ; Cytoplasmic side . Appears in the nucleus at G2, then concentrates at the inner centromere region of chromosomes during prophase. Redistributes to the midzone of the mitotic spindle during anaphase. Here, the protein covers the entire equatorial diameter from cortex to cortex (PubMed:12919680, PubMed:1939370, PubMed:7559776, PubMed:9914378). Colocalizes with cytoplasmic microtubules in interphase cells (PubMed:23388455). Colocalizes with RAC1 at the cell membrane (PubMed:25074804). .

---

**Expression :** Brain,Epithelium,Melanoma,Muscle,Natural killer cell,Uterus,

---

**Sort :** 14063

---

**No4 :** 1

---

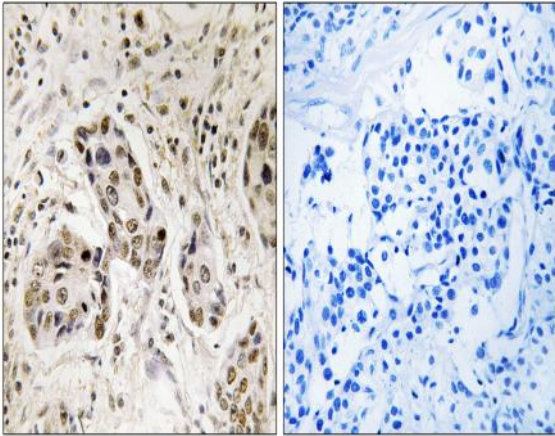
**Host :** Rabbit

---

**Modifications :** Unmodified

---

**Products Images**



Immunohistochemistry analysis of paraffin-embedded human breast carcinoma tissue, using RCC2 Antibody. The picture on the right is blocked with the synthesized peptide.