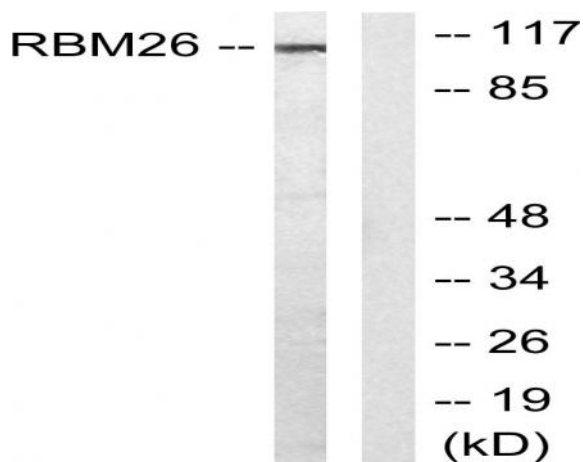


RBM26 Polyclonal Antibody

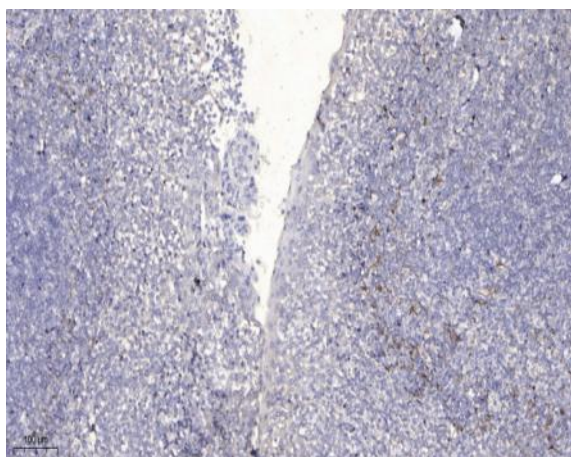
Catalog No :	YT4027
Reactivity :	Human;Mouse
Applications :	WB;IHC;IF;ELISA
Target :	RBM26
Gene Name :	RBM26
Protein Name :	RNA-binding protein 26
Human Gene Id :	64062
Human Swiss Prot No :	Q5T8P6
Mouse Gene Id :	74213
Mouse Swiss Prot No :	Q6NZN0
Immunogen :	The antiserum was produced against synthesized peptide derived from human RBM26. AA range:711-760
Specificity :	RBM26 Polyclonal Antibody detects endogenous levels of RBM26 protein.
Formulation :	Liquid in PBS containing 50% glycerol, 0.5% BSA and 0.02% sodium azide.
Source :	Polyclonal, Rabbit,IgG
Dilution :	WB 1:500 - 1:2000. ELISA: 1:10000.. IF 1:50-200
Purification :	The antibody was affinity-purified from rabbit antiserum by affinity-chromatography using epitope-specific immunogen.
Concentration :	1 mg/ml
Storage Stability :	-15°C to -25°C/1 year(Do not lower than -25°C)

Observed Band :	113kD
Background :	similarity:Contains 1 C3H1-type zinc finger.,similarity:Contains 2 RRM (RNA recognition motif) domains.,
Function :	similarity:Contains 1 C3H1-type zinc finger.,similarity:Contains 2 RRM (RNA recognition motif) domains.,
Expression :	Adipose tissue,Amygdala,Embryo,Epithelium,Fetal liver,Lymph,Placenta,Terato
Sort :	14049
No4 :	1
Host :	Rabbit
Modifications :	Unmodified

Products Images



Western blot analysis of lysates from Jurkat cells, using RBM26 Antibody. The lane on the right is blocked with the synthesized peptide.



Immunohistochemical analysis of paraffin-embedded human tonsil. 1, Antibody was diluted at 1:200(4° overnight). 2, Tris-EDTA,pH9.0 was used for antigen retrieval. 3,Secondary antibody was diluted at 1:200(room temperature, 30min).