

**RASSF7 Polyclonal Antibody**

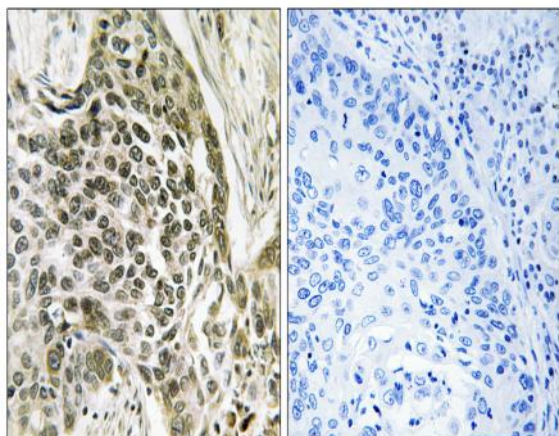
<b>Catalog No :</b>	YT4014
<b>Reactivity :</b>	Human;Mouse
<b>Applications :</b>	IHC;IF;ELISA
<b>Target :</b>	RASSF7
<b>Gene Name :</b>	RASSF7
<b>Protein Name :</b>	Ras association domain-containing protein 7
<b>Human Gene Id :</b>	8045
<b>Human Swiss Prot No :</b>	Q02833
<b>Mouse Gene Id :</b>	66985
<b>Mouse Swiss Prot No :</b>	Q9DD19
<b>Immunogen :</b>	The antiserum was produced against synthesized peptide derived from human RASSF7. AA range:159-208
<b>Specificity :</b>	RASSF7 Polyclonal Antibody detects endogenous levels of RASSF7 protein.
<b>Formulation :</b>	Liquid in PBS containing 50% glycerol, 0.5% BSA and 0.02% sodium azide.
<b>Source :</b>	Polyclonal, Rabbit,IgG
<b>Dilution :</b>	IHC 1:100 - 1:300. ELISA: 1:5000.. IF 1:50-200
<b>Purification :</b>	The antibody was affinity-purified from rabbit antiserum by affinity-chromatography using epitope-specific immunogen.
<b>Concentration :</b>	1 mg/ml
<b>Storage Stability :</b>	-15°C to -25°C/1 year(Do not lower than -25°C)

---

<b>Molecularweight :</b>	40kD
<b>Background :</b>	similarity:Contains 1 Ras-associating domain.,
<b>Function :</b>	similarity:Contains 1 Ras-associating domain.,
<b>Subcellular Location :</b>	Cytoplasm, cytoskeleton, microtubule organizing center, centrosome . Colocalizes with gamma-tubulin.
<b>Expression :</b>	PCR rescued clones,Placenta,
<b>Sort :</b>	13832
<b>No4 :</b>	1
<b>Host :</b>	Rabbit
<b>Modifications :</b>	Unmodified

---

## Products Images



Immunohistochemistry analysis of paraffin-embedded human lung carcinoma tissue, using RASSF7 Antibody. The picture on the right is blocked with the synthesized peptide.