

SENP3 Polyclonal Antibody

Catalog No :	YT4238
Reactivity :	Human;Mouse
Applications :	WB;IHC;IF;ELISA
Target :	SENP3
Gene Name :	SENP3
Protein Name :	Sentrin-specific protease 3
Human Gene Id :	26168
Human Swiss Prot No :	Q9H4L4
Mouse Gene Id :	80886
Mouse Swiss Prot No :	Q9EP97
Immunogen :	The antiserum was produced against synthesized peptide derived from human SENP3. AA range:10-59
Specificity :	SENP3 Polyclonal Antibody detects endogenous levels of SENP3 protein.
Formulation :	Liquid in PBS containing 50% glycerol, 0.5% BSA and 0.02% sodium azide.
Source :	Polyclonal, Rabbit,IgG
Dilution :	WB 1:500 - 1:2000. IHC 1:100 - 1:300. ELISA: 1:5000.. IF 1:50-200
Purification :	The antibody was affinity-purified from rabbit antiserum by affinity-chromatography using epitope-specific immunogen.
Concentration :	1 mg/ml
Storage Stability :	-15°C to -25°C/1 year(Do not lower than -25°C)

Observed Band : 80kD**Background :**

The reversible posttranslational modification of proteins by the addition of small ubiquitin-like SUMO proteins (see SUMO1; MIM 601912) is required for numerous biologic processes. SUMO-specific proteases, such as SENP3, are responsible for the initial processing of SUMO precursors to generate a C-terminal diglycine motif required for the conjugation reaction. They also have isopeptidase activity for the removal of SUMO from high molecular mass SUMO conjugates (Di Bacco et al., 2006 [PubMed 16738315]).[supplied by OMIM, Jun 2009],

Function :

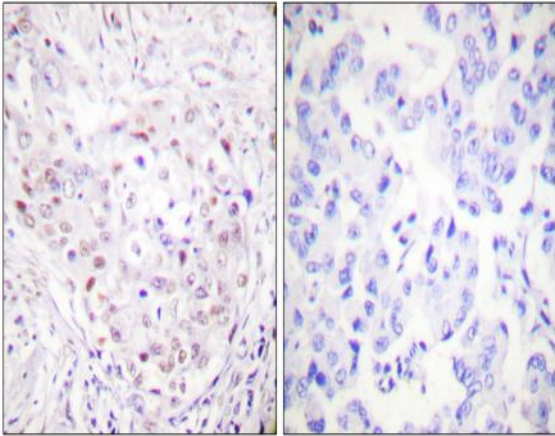
function:Protease that releases SUMO2 and SUMO3 monomers from sumoylated substrates, but has only weak activity against SUMO1 conjugates. Deconjugates SUMO2 from MEF2D, which increases its transcriptional activation capability.,similarity:Belongs to the peptidase C48 family.,subunit:Binds to UBL1 and SMT3H1.,

Subcellular Location :

Nucleus, nucleolus . Nucleus, nucleoplasm . Cytoplasm . Redistributes between the nucleolus and the nucleoplasm in response to mild oxidative stress (PubMed:19680224). Mainly found in the nucleoplasm, with low levels detected in the cytoplasmic and chromatin fractions (By similarity). .

Expression : Epithelium,Lymph,Melanoma,Uterus,**Tag :** hot**Sort :** 16225**No4 :** 1**Host :** Rabbit**Modifications :** Unmodified

Products Images



Immunohistochemistry analysis of paraffin-embedded human breast carcinoma tissue, using SENP3 Antibody. The picture on the right is blocked with the synthesized peptide.