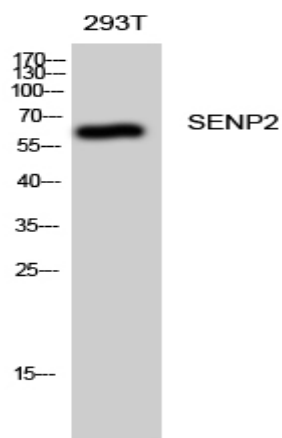


## SENP2 Polyclonal Antibody

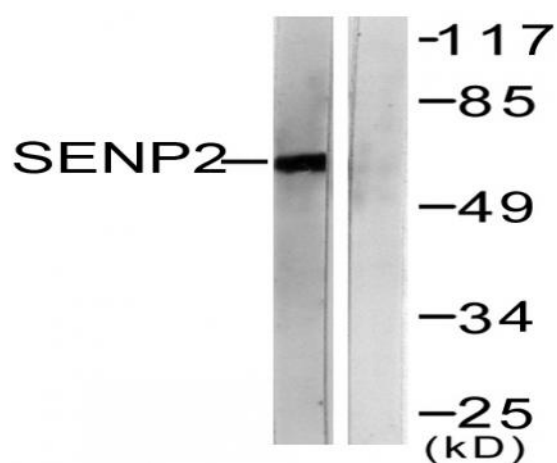
<b>Catalog No :</b>	YT4237
<b>Reactivity :</b>	Human;Mouse;Rat
<b>Applications :</b>	WB;IHC;IF;ELISA
<b>Target :</b>	SENP2
<b>Fields :</b>	>>Nucleocytoplasmic transport;>>Wnt signaling pathway
<b>Gene Name :</b>	SENP2
<b>Protein Name :</b>	Sentrin-specific protease 2
<b>Human Gene Id :</b>	59343
<b>Human Swiss Prot No :</b>	Q9HC62
<b>Mouse Gene Id :</b>	75826
<b>Mouse Swiss Prot No :</b>	Q91ZX6
<b>Rat Gene Id :</b>	78973
<b>Rat Swiss Prot No :</b>	Q9EQE1
<b>Immunogen :</b>	The antiserum was produced against synthesized peptide derived from human SENP2. AA range:481-530
<b>Specificity :</b>	SENP2 Polyclonal Antibody detects endogenous levels of SENP2 protein.
<b>Formulation :</b>	Liquid in PBS containing 50% glycerol, 0.5% BSA and 0.02% sodium azide.
<b>Source :</b>	Polyclonal, Rabbit,IgG
<b>Dilution :</b>	WB 1:500 - 1:2000. IHC 1:100 - 1:300. ELISA: 1:20000.. IF 1:50-200

<b>Purification :</b>	The antibody was affinity-purified from rabbit antiserum by affinity-chromatography using epitope-specific immunogen.
<b>Concentration :</b>	1 mg/ml
<b>Storage Stability :</b>	-15°C to -25°C/1 year(Do not lower than -25°C)
<b>Observed Band :</b>	68kD
<b>Cell Pathway :</b>	WNT;WNT-T CELL
<b>Background :</b>	SUMO1 (UBL1; MIM 601912) is a small ubiquitin-like protein that can be covalently conjugated to other proteins. SENP2 is one of a group of enzymes that process newly synthesized SUMO1 into the conjugatable form and catalyze the deconjugation of SUMO1-containing species.[supplied by OMIM, Apr 2004],
<b>Function :</b>	domain:The N-terminus is necessary and sufficient for nuclear envelope targeting.,function:Protease that catalyzes two essential functions in the SUMO pathway: processing of full-length SUMO1, SUMO2 and SUMO3 to their mature forms and deconjugation of SUMO1, SUMO2 and SUMO3 from targeted proteins. May down-regulate CTNNB1 levels and thereby modulate the Wnt pathway.,PTM:Polyubiquitinated; which leads to proteasomal degradation.,similarity:Belongs to the peptidase C48 family.,subcellular location:Shuttles between cytoplasm and nucleus.,subunit:Binds to SUMO2 and SUMO3 (By similarity). Interacts with the C-terminal domain of NUP153 via its N-terminus.,
<b>Subcellular Location :</b>	Nucleus, nuclear pore complex . Nucleus membrane ; Peripheral membrane protein ; Nucleoplasmic side . Cytoplasm . Shuttles between cytoplasm and nucleus. .
<b>Expression :</b>	Brain,Fetal brain,Melanoma,Teratocarcinoma,
<b>Tag :</b>	orthogonal
<b>Sort :</b>	16224
<b>No4 :</b>	1
<b>Host :</b>	Rabbit
<b>Modifications :</b>	Unmodified

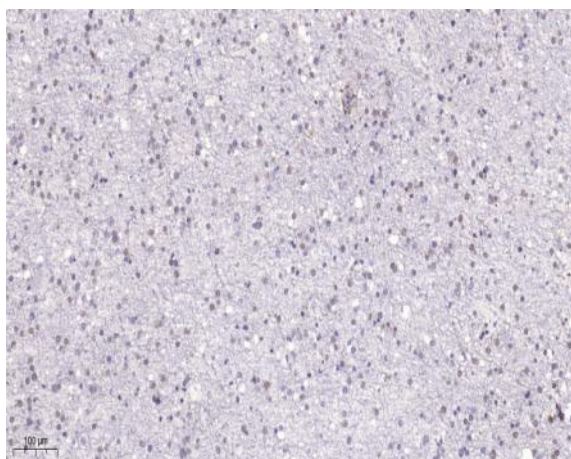
## Products Images



Western Blot analysis of 293T cells using SENP2 Polyclonal Antibody diluted at 1:1000



Western blot analysis of lysates from MDA-MB-435 cells, using SENP2 Antibody. The lane on the right is blocked with the synthesized peptide.



Immunohistochemical analysis of paraffin-embedded human brain. 1, Tris-EDTA, pH 9.0 was used for antigen retrieval. 2 Antibody was diluted at 1:200 (4° overnight). 3, Secondary antibody was diluted at 1:200 (room temperature, 45min).