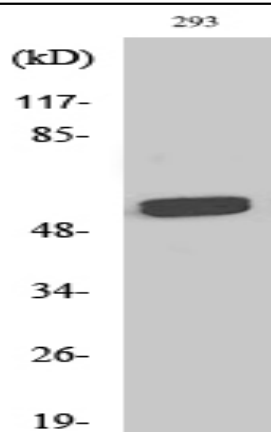


RAP1 Polyclonal Antibody

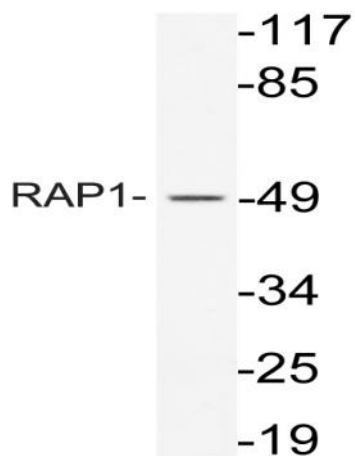
Catalog No :	YT4005
Reactivity :	Human;Rat;Mouse;
Applications :	WB;IHC
Target :	RAP1
Gene Name :	TERF2IP
Protein Name :	Telomeric repeat-binding factor 2-interacting protein 1
Human Gene Id :	54386
Human Swiss Prot No :	Q9NYB0
Mouse Swiss Prot No :	Q91VL8
Immunogen :	The antiserum was produced against synthesized peptide derived from human RAP1. AA range:203-252
Specificity :	RAP1 Polyclonal Antibody detects endogenous levels of RAP1 protein.
Formulation :	Liquid in PBS containing 50% glycerol, 0.5% BSA and 0.02% sodium azide.
Source :	Polyclonal, Rabbit,IgG
Dilution :	WB 1:500-2000;IHC 1:50-300
Purification :	The antibody was affinity-purified from rabbit antiserum by affinity-chromatography using epitope-specific immunogen.
Concentration :	1 mg/ml
Storage Stability :	-15°C to -25°C/1 year(Do not lower than -25°C)
Observed Band :	55kD

Cell Pathway :	B_Cell_Antigen; Adherens_Junction
Background :	The gene encodes a protein that is part of a complex involved in telomere length regulation. Pseudogenes are present on chromosomes 5 and 22. [provided by RefSeq, Apr 2010],
Function :	function:May play a role in telomere length regulation. Component of the shelterin complex (telosome) that is involved in the regulation of telomere length and protection. Shelterin associates with arrays of double-stranded TTAGGG repeats added by telomerase and protects chromosome ends; without its protective activity, telomeres are no longer hidden from the DNA damage surveillance and chromosome ends are inappropriately processed by DNA repair pathways.,miscellaneous:Recruited to telomeres by TRF2; seemingly it does not directly bind to DNA itself.,PTM:Phosphorylated upon DNA damage, probably by ATM or ATR.,sequence caution:Translated as Glu.,similarity:Contains 1 BRCT domain.,similarity:Contains 1 Myb-like domain.,subcellular location:Colocalizes with telomeric DNA in interphase and metaphase cells.,subunit:Homodimer. Component of the shelterin complex (telosome) composed of TERF1, TE
Subcellular Location :	Nucleus . Cytoplasm . Chromosome . Chromosome, telomere . Associates with chromosomes, both at telomeres and in extratelomeric sites. Also exists as a cytoplasmic form, where it associates with the IKK complex. .
Expression :	Ubiquitous. Highly expressed.
Sort :	13817
No4 :	1
Host :	Rabbit
Modifications :	Unmodified

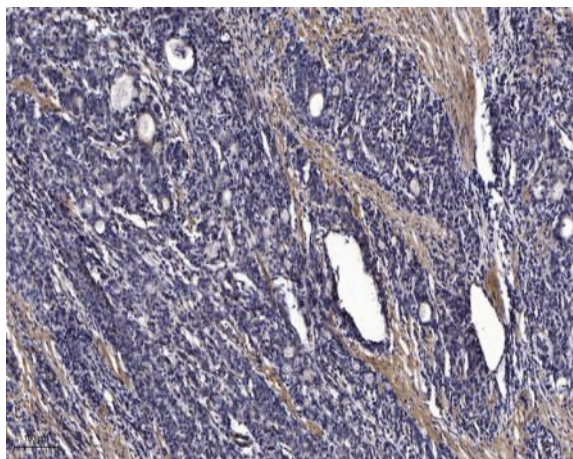
Products Images



Western Blot analysis of various cells using RAP1 Polyclonal Antibody diluted at 1:500



Western blot analysis of lysate from 293 cells, using RAP1 antibody.



Immunohistochemical analysis of paraffin-embedded human Gastric adenocarcinoma. 1, Antibody was diluted at 1:200(4° overnight). 2, Tris-EDTA,pH9.0 was used for antigen retrieval. 3,Secondary antibody was diluted at 1:200(room temperature, 45min).