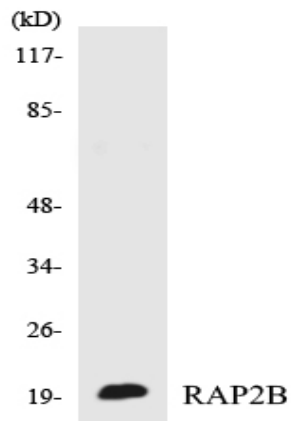


Rap 2B Polyclonal Antibody

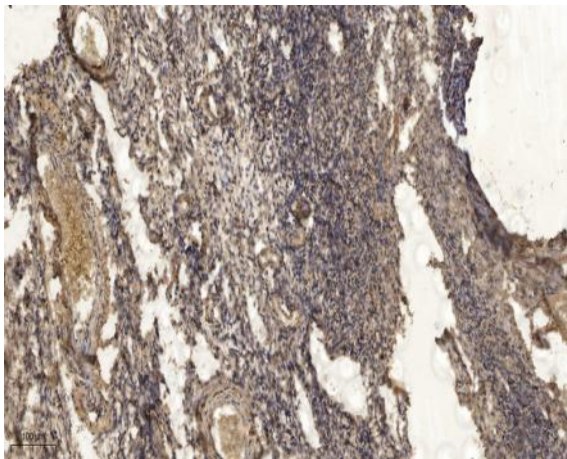
Catalog No :	YT4003
Reactivity :	Human;Mouse;Rat
Applications :	WB;IHC
Target :	Rap 2B
Gene Name :	RAP2B
Protein Name :	Ras-related protein Rap-2b
Human Gene Id :	5912
Human Swiss Prot No :	P61225
Mouse Gene Id :	74012
Mouse Swiss Prot No :	P61226
Rat Gene Id :	170923
Rat Swiss Prot No :	P61227
Immunogen :	The antiserum was produced against synthesized peptide derived from human RAP2B. AA range:98-147
Specificity :	Rap 2B Polyclonal Antibody detects endogenous levels of Rap 2B protein.
Formulation :	Liquid in PBS containing 50% glycerol, 0.5% BSA and 0.02% sodium azide.
Source :	Polyclonal, Rabbit,IgG
Dilution :	WB 1:500-2000;IHC 1:50-300
Purification :	The antibody was affinity-purified from rabbit antiserum by affinity-chromatography using epitope-specific immunogen.

Concentration :	1 mg/ml
Storage Stability :	-15°C to -25°C/1 year(Do not lower than -25°C)
Observed Band :	18kD
Background :	This intronless gene belongs to a family of RAS-related genes. The proteins encoded by these genes share approximately 50% amino acid identity with the classical RAS proteins and have numerous structural features in common. The most striking difference between the RAP and RAS proteins resides in their 61st amino acid: glutamine in RAS is replaced by threonine in RAP proteins. Evidence suggests that this protein may be polyisoprenylated and palmitoylated. [provided by RefSeq, Jul 2008],
Function :	domain:The effector domain mediates the interaction with RUNDC3A.,similarity:Belongs to the small GTPase superfamily. Ras family.,subunit:Interacts with PLCE1. Interacts with SGSM1, SGSM2 and SGSM3. The GTP-bound form of RAP2B interacts with RUNDC3A.,
Subcellular Location :	Recycling endosome membrane ; Lipid-anchor ; Cytoplasmic side . Associated with red blood cells-released vesicles.
Expression :	Expressed in red blood cells (at protein level).
Sort :	13815
No4 :	1
Host :	Rabbit
Modifications :	Unmodified

Products Images



Western blot analysis of the lysates from COLO205 cells using RAP2B antibody.



Immunohistochemical analysis of paraffin-embedded human oophoroma. 1, Antibody was diluted at 1:200(4° overnight). 2, Tris-EDTA,pH9.0 was used for antigen retrieval. 3,Secondary antibody was diluted at 1:200(room temperature, 45min).