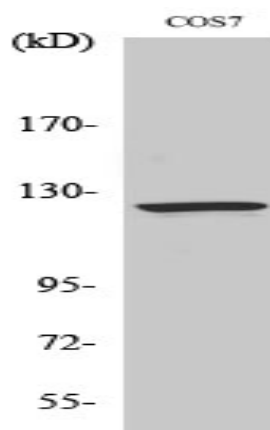


Ran BP-6 Polyclonal Antibody

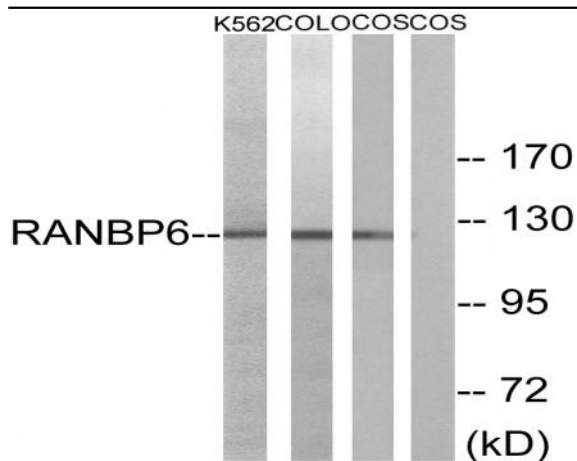
Catalog No :	YT4000
Reactivity :	Human;Mouse;Rat;Monkey
Applications :	WB;ELISA;IHC
Target :	Ran BP-6
Gene Name :	RANBP6
Protein Name :	Ran-binding protein 6
Human Gene Id :	26953
Human Swiss Prot No :	O60518
Mouse Gene Id :	240614
Mouse Swiss Prot No :	Q8BIV3
Immunogen :	The antiserum was produced against synthesized peptide derived from human RANBP6. AA range:800-849
Specificity :	Ran BP-6 Polyclonal Antibody detects endogenous levels of Ran BP-6 protein.
Formulation :	Liquid in PBS containing 50% glycerol, 0.5% BSA and 0.02% sodium azide.
Source :	Polyclonal, Rabbit,IgG
Dilution :	WB 1:500-2000;IHC 1:50-300; ELISA 2000-20000
Purification :	The antibody was affinity-purified from rabbit antiserum by affinity-chromatography using epitope-specific immunogen.
Concentration :	1 mg/ml
Storage Stability :	-15°C to -25°C/1 year(Do not lower than -25°C)

Observed Band :	125kD
Background :	function:May function in nuclear protein import as nuclear transport receptor.,similarity:Belongs to the importin beta family.,similarity:Contains 7 HEAT repeats.,
Function :	function:May function in nuclear protein import as nuclear transport receptor.,similarity:Belongs to the importin beta family.,similarity:Contains 7 HEAT repeats.,
Subcellular Location :	Cytoplasm . Nucleus .
Expression :	Endometrium,Kidney,Placenta,
Sort :	13809
No4 :	1
Host :	Rabbit
Modifications :	Unmodified

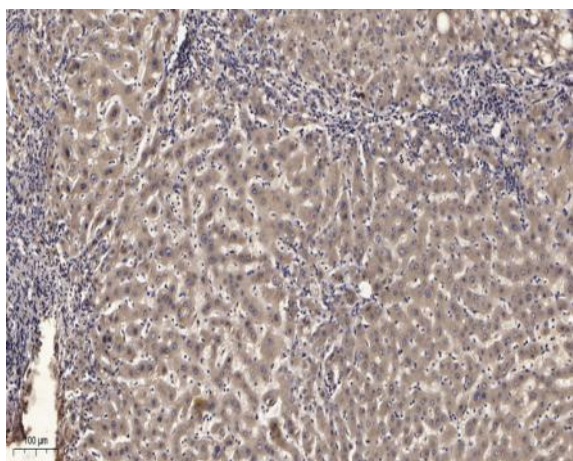
Products Images



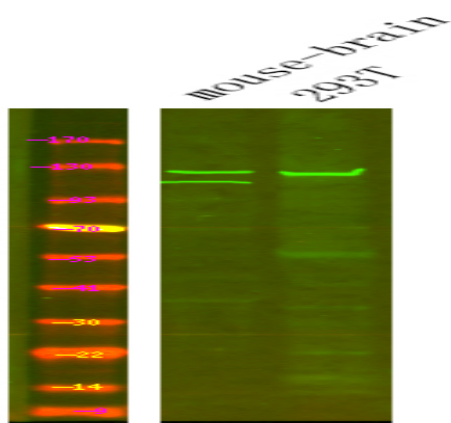
Western Blot analysis of various cells using Ran BP-6 Polyclonal Antibody



Western blot analysis of lysates from COS7, K562, and COLO cells, using RANBP6 Antibody. The lane on the right is blocked with the synthesized peptide.



Immunohistochemical analysis of paraffin-embedded human liver cancer. 1, Antibody was diluted at 1:200 (4° overnight). 2, Tris-EDTA, pH 9.0 was used for antigen retrieval. 3, Secondary antibody was diluted at 1:200 (room temperature, 45 min).



Western Blot analysis of Various cells using primary antibody at 1:1000 dilution 4°C, overnight. Secondary antibody (catalog#: RS23920) was diluted at 1:10000 25°C [?] 1.5 hours