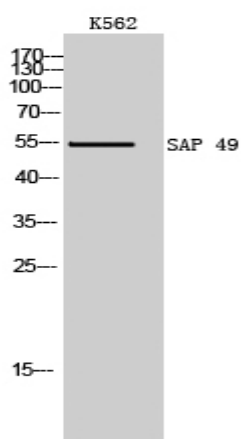


SAP 49 Polyclonal Antibody

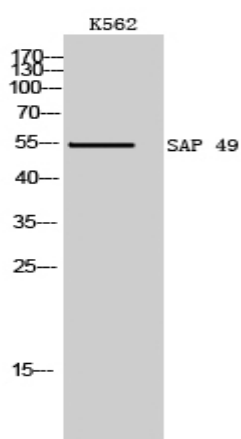
Catalog No :	YT4211
Reactivity :	Human;Mouse;Rat
Applications :	WB;IHC;IF;ELISA
Target :	SAP 49
Fields :	>>Spliceosome
Gene Name :	SF3B4
Protein Name :	Splicing factor 3B subunit 4
Human Gene Id :	10262
Human Swiss Prot No :	Q15427
Mouse Gene Id :	107701
Mouse Swiss Prot No :	Q8QZY9
Rat Gene Id :	295270
Rat Swiss Prot No :	Q6AYL5
Immunogen :	The antiserum was produced against synthesized peptide derived from human SF3B4. AA range:61-110
Specificity :	SAP 49 Polyclonal Antibody detects endogenous levels of SAP 49 protein.
Formulation :	Liquid in PBS containing 50% glycerol, 0.5% BSA and 0.02% sodium azide.
Source :	Polyclonal, Rabbit,IgG
Dilution :	WB 1:500 - 1:2000. IHC 1:100 - 1:300. ELISA: 1:40000.. IF 1:50-200

Purification :	The antibody was affinity-purified from rabbit antiserum by affinity-chromatography using epitope-specific immunogen.
Concentration :	1 mg/ml
Storage Stability :	-15°C to -25°C/1 year(Do not lower than -25°C)
Observed Band :	55kD
Cell Pathway :	Spliceosome;
Background :	<p>This gene encodes one of four subunits of the splicing factor 3B. The protein encoded by this gene cross-links to a region in the pre-mRNA immediately upstream of the branchpoint sequence in pre-mRNA in the prespliceosomal complex A. It also may be involved in the assembly of the B, C and E spliceosomal complexes. In addition to RNA-binding activity, this protein interacts directly and highly specifically with subunit 2 of the splicing factor 3B. This protein contains two N-terminal RNA-recognition motifs (RRMs), consistent with the observation that it binds directly to pre-mRNA. [provided by RefSeq, Jul 2008],</p>
Function :	<p>function:Subunit of the splicing factor SF3B required for 'A' complex assembly formed by the stable binding of U2 snRNP to the branchpoint sequence (BPS) in pre-mRNA. Sequence independent binding of SF3A/SF3B complex upstream of the branch site is essential, it may anchor U2 snRNP to the pre-mRNA. May also be involved in the assembly of the 'E' complex. SF3B4 has been found in complex 'B' and 'C' as well. Belongs also to the minor U12-dependent spliceosome, which is involved in the splicing of rare class of nuclear pre-mRNA intron.,similarity:Belongs to the SF3B4 family.,similarity:Contains 2 RRM (RNA recognition motif) domains.,subunit:Component of splicing factor SF3B which is composed of at least eight subunits; SF3B1/SAP155/SF3B155, SF3B2/SAP145/SF3B145, SF3B3/SAP130/SF3B130, SF3B4/SAP49/SF3B49, SF3B14A, PHF5A/SF3B14B, SF3B10 and SF3B125. SF3B associates with the splicing factor SF3A</p>
Subcellular Location :	Nucleus .
Expression :	Ovarian carcinoma,Skin,Testis,Thymus,
Sort :	14761
No4 :	1
Host :	Rabbit
Modifications :	Unmodified

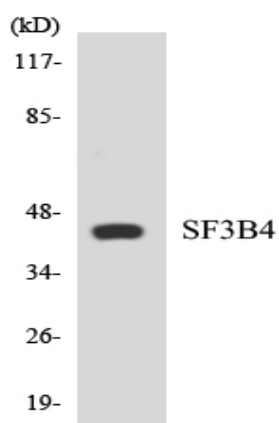
Products Images



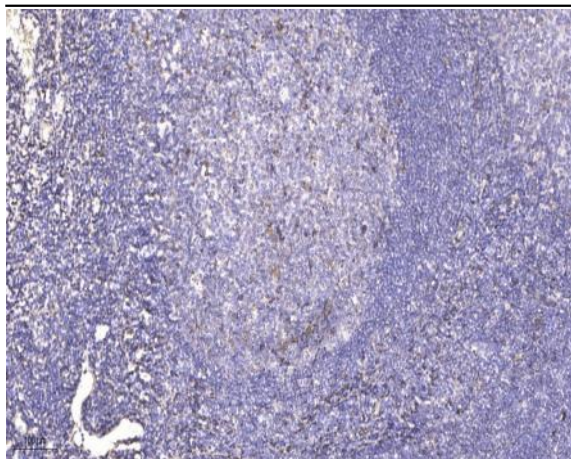
Western Blot analysis of K562 cells using SAP 49 Polyclonal Antibody cells nucleus extracted by Minute TM Cytoplasmic and Nuclear Fractionation kit (SC-003, Inventbiotech, MN, USA).



Western Blot analysis of K562 cells using SAP 49 Polyclonal Antibody cells nucleus extracted by Minute TM Cytoplasmic and Nuclear Fractionation kit (SC-003, Inventbiotech, MN, USA).



Western blot analysis of the lysates from 293 cells using SF3B4 antibody.



Immunohistochemical analysis of paraffin-embedded human tonsil. 1, Antibody was diluted at 1:200(4° overnight). 2, Tris-EDTA,pH9.0 was used for antigen retrieval. 3,Secondary antibody was diluted at 1:200(room temperature, 45min).