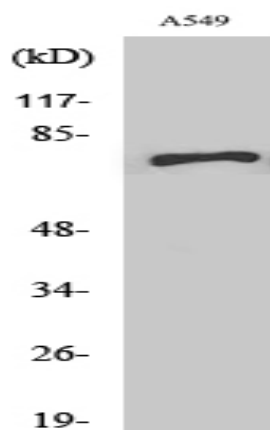


## SCFD1 Polyclonal Antibody

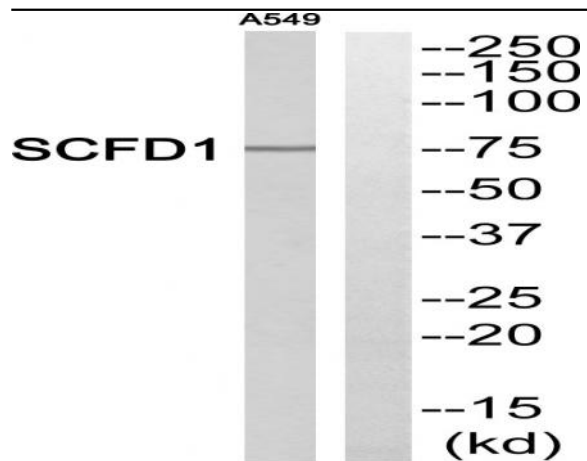
<b>Catalog No :</b>	YT4221
<b>Reactivity :</b>	Human;Mouse;Rat
<b>Applications :</b>	WB;IHC
<b>Target :</b>	SCFD1
<b>Gene Name :</b>	SCFD1
<b>Protein Name :</b>	Sec1 family domain-containing protein 1
<b>Human Gene Id :</b>	23256
<b>Human Swiss Prot No :</b>	Q8WVM8
<b>Mouse Gene Id :</b>	76983
<b>Mouse Swiss Prot No :</b>	Q8BRF7
<b>Rat Gene Id :</b>	54350
<b>Rat Swiss Prot No :</b>	Q62991
<b>Immunogen :</b>	The antiserum was produced against synthesized peptide derived from human SCFD1. AA range:533-582
<b>Specificity :</b>	SCFD1 Polyclonal Antibody detects endogenous levels of SCFD1 protein.
<b>Formulation :</b>	Liquid in PBS containing 50% glycerol, 0.5% BSA and 0.02% sodium azide.
<b>Source :</b>	Polyclonal, Rabbit,IgG
<b>Dilution :</b>	WB 1:500-2000;IHC 1:50-300
<b>Purification :</b>	The antibody was affinity-purified from rabbit antiserum by affinity-chromatography using epitope-specific immunogen.

<b>Concentration :</b>	1 mg/ml
<b>Storage Stability :</b>	-15°C to -25°C/1 year(Do not lower than -25°C)
<b>Molecularweight :</b>	72kD
<b>Background :</b>	function:Involved in vesicular transport between the endoplasmic reticulum and the Golgi.,PTM:Phosphorylated upon DNA damage, probably by ATM or ATR.,similarity:Belongs to the STXBP/unc-18/SEC1 family.,subunit:Binds STX5A.,
<b>Function :</b>	function:Involved in vesicular transport between the endoplasmic reticulum and the Golgi.,PTM:Phosphorylated upon DNA damage, probably by ATM or ATR.,similarity:Belongs to the STXBP/unc-18/SEC1 family.,subunit:Binds STX5A.,
<b>Subcellular Location :</b>	Cytoplasm . Endoplasmic reticulum membrane ; Peripheral membrane protein . Golgi apparatus, Golgi stack membrane ; Peripheral membrane protein .
<b>Expression :</b>	Brain,Epithelium,Heart,Liver,Lymph,Pituitary,Placenta,Platelet,Umbilical co
<b>Sort :</b>	16173
<b>No4 :</b>	1
<b>Host :</b>	Rabbit
<b>Modifications :</b>	Unmodified

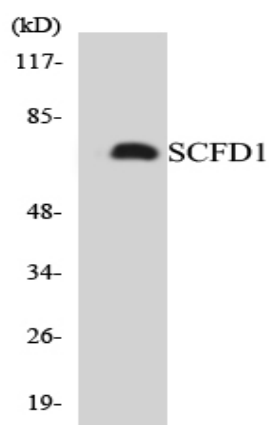
## Products Images



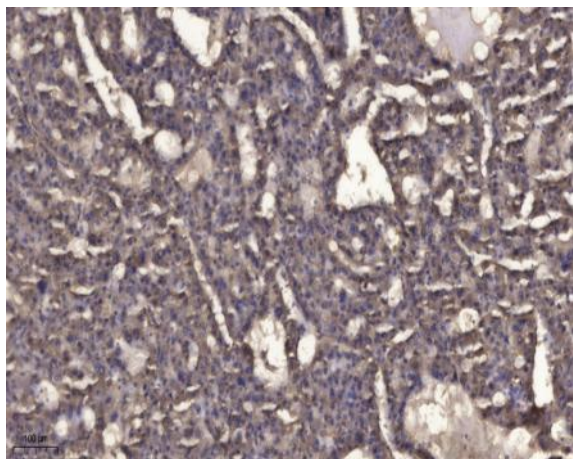
Western Blot analysis of various cells using SCFD1 Polyclonal Antibody



Western blot analysis of SCFD1 Antibody. The lane on the right is blocked with the SCFD1 peptide.



Western blot analysis of the lysates from 293 cells using SCFD1 antibody.



Immunohistochemical analysis of paraffin-embedded human liver cancer. 1, Antibody was diluted at 1:200(4° overnight). 2, Tris-EDTA,pH9.0 was used for antigen retrieval. 3,Secondary antibody was diluted at 1:200(room temperature, 45min).