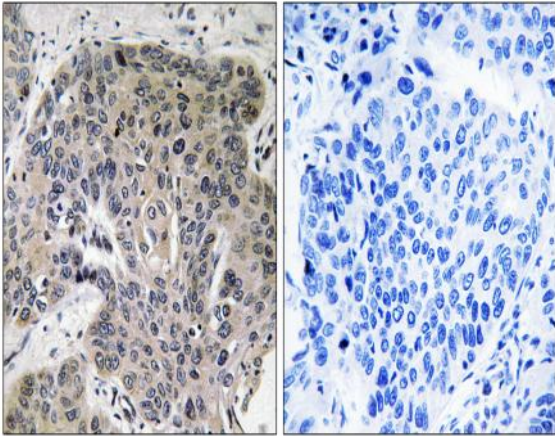


S-100A3 Polyclonal Antibody

Catalog No :	YT4200
Reactivity :	Human;Mouse;Rat
Applications :	WB;IHC;IF;ELISA
Target :	S-100A3
Gene Name :	S100A3
Protein Name :	Protein S100-A3
Human Gene Id :	6274
Human Swiss Prot No :	P33764
Mouse Gene Id :	20197
Mouse Swiss Prot No :	P62818
Rat Gene Id :	114216
Rat Swiss Prot No :	P62819
Immunogen :	The antiserum was produced against synthesized peptide derived from human S100A3. AA range:26-75
Specificity :	S-100A3 Polyclonal Antibody detects endogenous levels of S-100A3 protein.
Formulation :	Liquid in PBS containing 50% glycerol, 0.5% BSA and 0.02% sodium azide.
Source :	Polyclonal, Rabbit,IgG
Dilution :	WB 1:500-2000 IHC 1:100 - 1:300. ELISA: 1:40000. IF 1:50-200
Purification :	The antibody was affinity-purified from rabbit antiserum by affinity-chromatography using epitope-specific immunogen.

Concentration :	1 mg/ml
Storage Stability :	-15°C to -25°C/1 year(Do not lower than -25°C)
Molecularweight :	12kD
Observed Band :	22kD
Background :	S100 calcium binding protein A3(S100A3) Homo sapiens The protein encoded by this gene is a member of the S100 family of proteins containing 2 EF-hand calcium-binding motifs. S100 proteins are localized in the cytoplasm and/or nucleus of a wide range of cells, and involved in the regulation of a number of cellular processes such as cell cycle progression and differentiation. S100 genes include at least 13 members which are located as a cluster on chromosome 1q21. This protein has the highest content of cysteines of all S100 proteins, has a high affinity for Zinc, and is highly expressed in human hair cuticle. The precise function of this protein is unknown. [provided by RefSeq, Jul 2008],
Function :	function:Binds both calcium and zinc. Probably binds 2 zinc ions per molecule. May be involved in calcium-dependent cuticle cell differentiation and hair shaft formation.,similarity:Belongs to the S-100 family.,similarity:Contains 2 EF-hand domains.,subunit:Homodimer.,tissue specificity:Skin specific.,
Subcellular Location :	Cytoplasm .
Expression :	Skin specific, specifically expressed at the inner endocuticle of hair fibers.
Sort :	14687
No4 :	1
Host :	Rabbit
Modifications :	Unmodified

Products Images



Immunohistochemistry analysis of paraffin-embedded human lung carcinoma tissue, using S100A3 Antibody. The picture on the right is blocked with the synthesized peptide.