

## Rabphilin-3A Polyclonal Antibody

<b>Catalog No :</b>	YT3950
<b>Reactivity :</b>	Human;Mouse;Rat
<b>Applications :</b>	WB;IHC;IF;ELISA
<b>Target :</b>	Rabphilin 3A
<b>Gene Name :</b>	RPH3A
<b>Protein Name :</b>	Rabphilin-3A
<b>Human Gene Id :</b>	22895
<b>Human Swiss Prot No :</b>	Q9Y2J0
<b>Mouse Gene Id :</b>	19894
<b>Mouse Swiss Prot No :</b>	P47708
<b>Rat Gene Id :</b>	171039
<b>Rat Swiss Prot No :</b>	P47709
<b>Immunogen :</b>	The antiserum was produced against synthesized peptide derived from human Rabphilin 3A. AA range:203-252
<b>Specificity :</b>	Rabphilin-3A Polyclonal Antibody detects endogenous levels of Rabphilin-3A protein.
<b>Formulation :</b>	Liquid in PBS containing 50% glycerol, 0.5% BSA and 0.02% sodium azide.
<b>Source :</b>	Polyclonal, Rabbit,IgG
<b>Dilution :</b>	WB 1:500 - 1:2000. IHC 1:100 - 1:300. IF 1:200 - 1:1000. ELISA: 1:5000. Not yet tested in other applications.
<b>Purification :</b>	The antibody was affinity-purified from rabbit antiserum by affinity-

---

chromatography using epitope-specific immunogen.

---

**Concentration :** 1 mg/ml

---

**Storage Stability :** -15°C to -25°C/1 year(Do not lower than -25°C)

---

**Observed Band :** 75kD

---

**Background :** Exocytosis of neurotransmitters and hormones is fundamental to synaptic neurotransmission and cell-cell communication. RAB3A (MIM 179390) is a small G protein that is thought to act at late stages of exocytosis, and RPH3A is a RAB3A effector (Lin et al., 2007 [PubMed 17149709]).[supplied by OMIM, Jul 2008],

---

**Function :** function:Protein transport. Probably involved with Ras-related protein Rab-3A in synaptic vesicle traffic and/or synaptic vesicle fusion. Could play a role in neurotransmitter release by regulating membrane flow in the nerve terminal.,similarity:Contains 1 FYVE-type zinc finger.,similarity:Contains 1 RabBD (Rab-binding) domain.,similarity:Contains 2 C2 domains.,

---

**Subcellular Location :** Cytoplasmic vesicle, secretory vesicle, synaptic vesicle membrane . Cell projection, dendritic spine . Cell junction, synapse, postsynaptic cell membrane . Membrane ; Peripheral membrane protein .

---

**Expression :** Brain,Lung,

---

**Tag :** orthogonal

---

**Sort :** 13729

---

**No4 :** 1

---

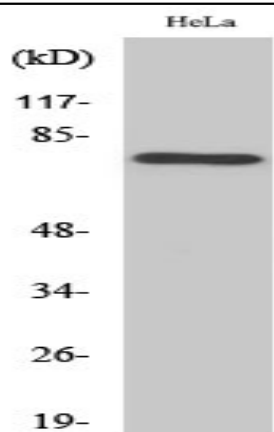
**Host :** Rabbit

---

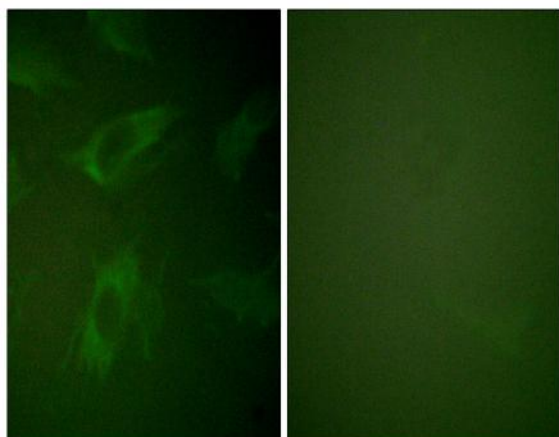
**Modifications :** Unmodified

---

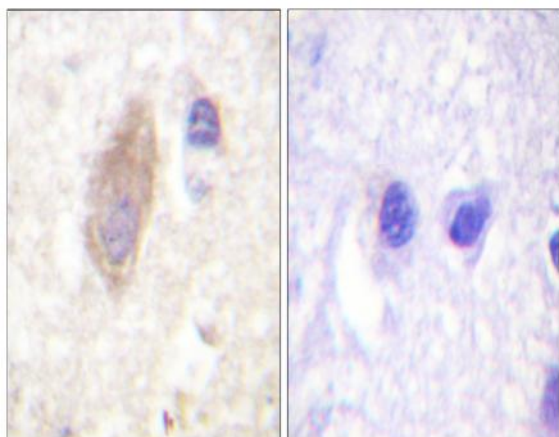
## Products Images



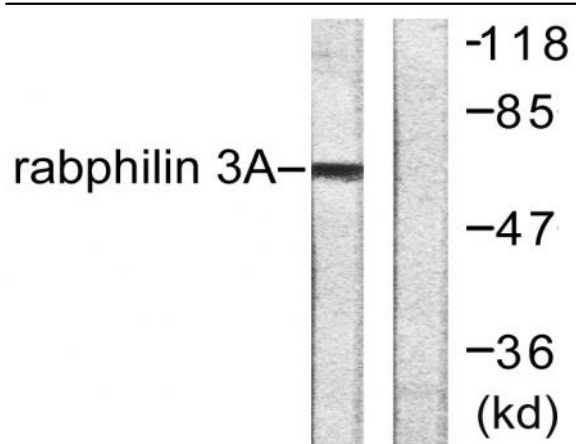
Western Blot analysis of various cells using Rabphilin-3A Polyclonal Antibody



Immunofluorescence analysis of HeLa cells, using Rabphilin 3A Antibody. The picture on the right is blocked with the synthesized peptide.



Immunohistochemistry analysis of paraffin-embedded human brain tissue, using Rabphilin 3A Antibody. The picture on the right is blocked with the synthesized peptide.



Western blot analysis of lysates from HeLa cells, treated with TNF- $\alpha$  20ng/ml 2', using Rabphilin 3A Antibody. The lane on the right is blocked with the synthesized peptide.