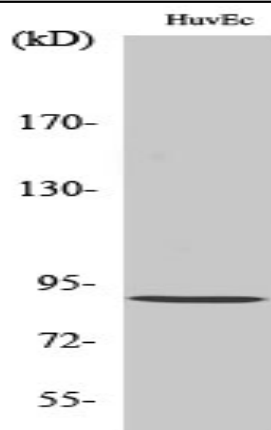


Rabenosyn-5 Polyclonal Antibody

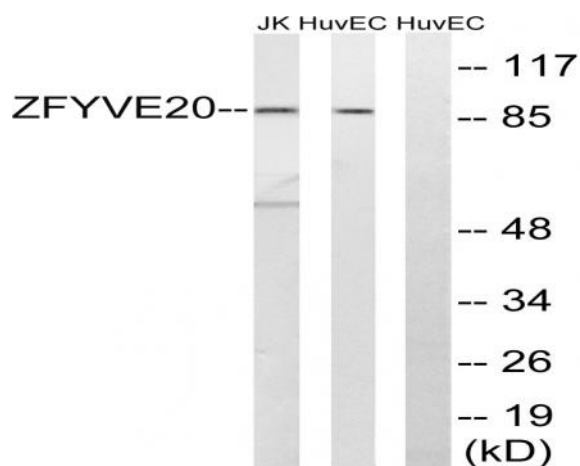
Catalog No :	YT3949
Reactivity :	Human;Mouse
Applications :	WB;ELISA;IHC
Target :	Rabenosyn-5
Fields :	>>Endocytosis
Gene Name :	ZFYVE20
Protein Name :	Rabenosyn-5
Human Gene Id :	64145
Human Swiss Prot No :	Q9H1K0
Mouse Gene Id :	78287
Mouse Swiss Prot No :	Q80Y56
Immunogen :	The antiserum was produced against synthesized peptide derived from human ZFYVE20. AA range:145-194
Specificity :	Rabenosyn-5 Polyclonal Antibody detects endogenous levels of Rabenosyn-5 protein.
Formulation :	Liquid in PBS containing 50% glycerol, 0.5% BSA and 0.02% sodium azide.
Source :	Polyclonal, Rabbit,IgG
Dilution :	WB 1:500-2000;IHC 1:50-300; ELISA 2000-20000
Purification :	The antibody was affinity-purified from rabbit antiserum by affinity-chromatography using epitope-specific immunogen.
Concentration :	1 mg/ml

Storage Stability :	-15°C to -25°C/1 year(Do not lower than -25°C)
Observed Band :	89kD
Cell Pathway :	Endocytosis;
Background :	This gene encodes a protein that belongs to the FYVE zinc finger family of proteins. The encoded protein interacts with Ras-related proteins that regulate membrane trafficking. A missense mutation in this gene is associated with a defect in the early endocytic pathway. Alternative splicing results in multiple transcript variants. [provided by RefSeq, Oct 2014],
Function :	function:Rab4/Rab5 effector protein acting in early endocytic membrane fusion and membrane trafficking of recycling endosomes. Required for endosome fusion either homotypically or with clathrin coated vesicles. Plays a role in the lysosomal trafficking of cathepsin D from the Golgi to lysosomes. Also promotes the recycling of transferrin directly from early endosomes to the plasma membrane. Binds phospholipid vesicles containing phosphatidylinositol 3-phosphate (PtdInsP3).,similarity:Contains 1 C2H2-type zinc finger.,similarity:Contains 1 FYVE-type zinc finger.,similarity:Contains 1 UIM (ubiquitin-interacting motif) repeat.,subunit:Interacts with EHD1, RAB4A, RAB5A, RAB22A, RAB24 and VPS45. Binds simultaneously to RAB4A and RAB5A in vitro. Interacts with RAB4A and RAB5A that has been activated by GTP binding.,
Subcellular Location :	Cell membrane; Lipid-anchor; Cytoplasmic side. Early endosome membrane ; Lipid-anchor. Enriched in endosomes that are in close proximity to clathrin-enriched regions at the cell surface. .
Expression :	Brain,Cervix carcinoma,Epithelium,Human salivary gland,
Sort :	13727
No4 :	1
Host :	Rabbit
Modifications :	Unmodified

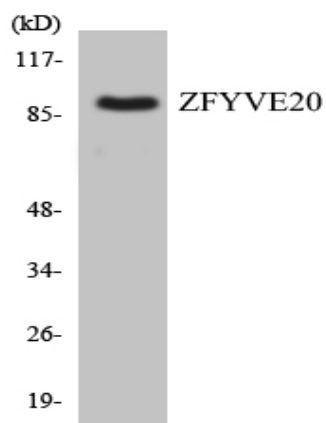
Products Images



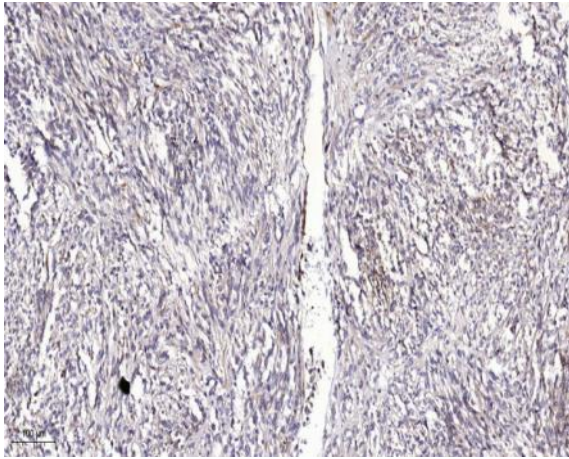
Western Blot analysis of various cells using Rabenosyn-5 Polyclonal Antibody diluted at 1:1000



Western blot analysis of lysates from HUVEC and Jurkat cells, using ZFYVE20 Antibody. The lane on the right is blocked with the synthesized peptide.



Western blot analysis of the lysates from COLO205 cells using ZFYVE20 antibody.



Immunohistochemical analysis of paraffin-embedded human Colon cancer. 1, Antibody was diluted at 1:200(4° overnight). 2, Tris-EDTA,pH9.0 was used for antigen retrieval. 3,Secondary antibody was diluted at 1:200(room temperature, 45min).