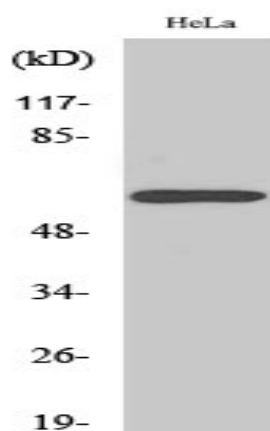


## Rabaptin-5 $\beta$ Polyclonal Antibody

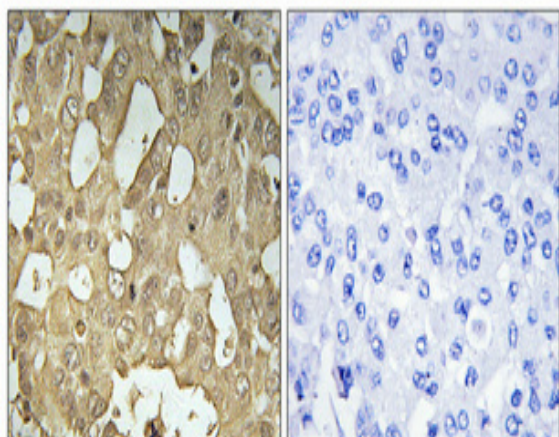
<b>Catalog No :</b>	YT3948
<b>Reactivity :</b>	Human;Mouse;Rat
<b>Applications :</b>	WB;IHC;IF;ELISA
<b>Target :</b>	Rabaptin-5 $\beta$
<b>Gene Name :</b>	RABEP2
<b>Protein Name :</b>	Rab GTPase-binding effector protein 2
<b>Human Gene Id :</b>	79874
<b>Human Swiss Prot No :</b>	Q9H5N1
<b>Mouse Gene Id :</b>	70314
<b>Mouse Swiss Prot No :</b>	Q91WG2
<b>Rat Gene Id :</b>	80754
<b>Rat Swiss Prot No :</b>	Q62835
<b>Immunogen :</b>	The antiserum was produced against synthesized peptide derived from human RABEP2. AA range:353-402
<b>Specificity :</b>	Rabaptin-5 $\beta$ Polyclonal Antibody detects endogenous levels of Rabaptin-5 $\beta$ protein.
<b>Formulation :</b>	Liquid in PBS containing 50% glycerol, 0.5% BSA and 0.02% sodium azide.
<b>Source :</b>	Polyclonal, Rabbit,IgG
<b>Dilution :</b>	WB 1:500 - 1:2000. IHC 1:100 - 1:300. ELISA: 1:10000.. IF 1:50-200
<b>Purification :</b>	The antibody was affinity-purified from rabbit antiserum by affinity-chromatography using epitope-specific immunogen.

<b>Concentration :</b>	1 mg/ml
<b>Storage Stability :</b>	-15°C to -25°C/1 year(Do not lower than -25°C)
<b>Observed Band :</b>	64kD
<b>Background :</b>	function:Plays a role in membrane trafficking and in homotypic early endosome fusion.,similarity:Belongs to the rabaptin family.,subunit:Heterodimer with RABGEF1. The dimer binds RAB5A that has been activated by GTP-binding.,
<b>Function :</b>	function:Plays a role in membrane trafficking and in homotypic early endosome fusion.,similarity:Belongs to the rabaptin family.,subunit:Heterodimer with RABGEF1. The dimer binds RAB5A that has been activated by GTP-binding.,
<b>Subcellular Location :</b>	Cytoplasm . Early endosome . Cytoplasm, cytoskeleton, microtubule organizing center, centrosome . Cytoplasm, cytoskeleton, cilium basal body .
<b>Expression :</b>	Hepatoma,Mammary gland,Testis,
<b>Sort :</b>	13249
<b>No4 :</b>	1
<b>Host :</b>	Rabbit
<b>Modifications :</b>	Unmodified

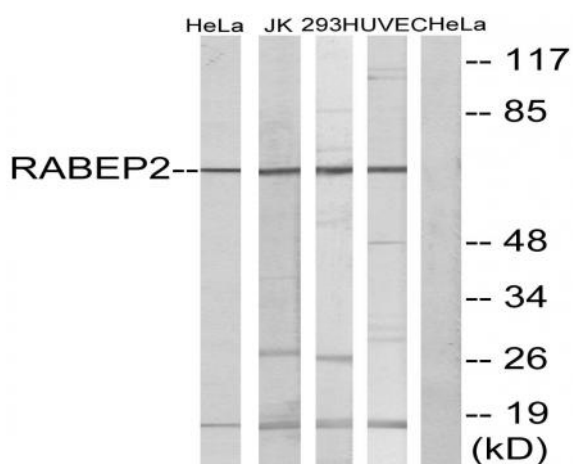
## Products Images



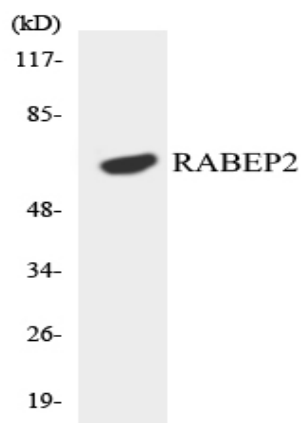
Western Blot analysis of various cells using Rabaptin-5 $\beta$  Polyclonal Antibody



Immunohistochemical analysis of paraffin-embedded Human breast cancer. Antibody was diluted at 1:100 (4° overnight). High-pressure and temperature Tris-EDTA, pH 8.0 was used for antigen retrieval. Negative control (right) obtained from antibody was pre-absorbed by immunogen peptide.



Western blot analysis of lysates from HeLa, Jurkat, 293, and HUVEC cells, using RABEP2 Antibody. The lane on the right is blocked with the synthesized peptide.



Western blot analysis of the lysates from HeLa cells using RABEP2 antibody.