

Rab11-FIP3 Polyclonal Antibody

Catalog No :	YT3944
Reactivity :	Human;Mouse;Rat
Applications :	IHC;IF;ELISA
Target :	Rab11-FIP3
Fields :	>>Endocytosis
Gene Name :	RAB11FIP3
Protein Name :	Rab11 family-interacting protein 3
Human Gene Id :	9727
Human Swiss Prot No :	O75154
Mouse Gene Id :	215445
Mouse Swiss Prot No :	Q8CHD8
Immunogen :	The antiserum was produced against synthesized peptide derived from human RAB11FIP3. AA range:569-618
Specificity :	Rab11-FIP3 Polyclonal Antibody detects endogenous levels of Rab11-FIP3 protein.
Formulation :	Liquid in PBS containing 50% glycerol, 0.5% BSA and 0.02% sodium azide.
Source :	Polyclonal, Rabbit,IgG
Dilution :	IHC 1:100 - 1:300. ELISA: 1:10000.. IF 1:50-200
Purification :	The antibody was affinity-purified from rabbit antiserum by affinity-chromatography using epitope-specific immunogen.
Concentration :	1 mg/ml

Storage Stability : -15°C to -25°C/1 year(Do not lower than -25°C)

Molecularweight : 82kD

Cell Pathway : Endocytosis;

Background : Proteins of the large Rab GTPase family (see RAB1A; MIM 179508) have regulatory roles in the formation, targeting, and fusion of intracellular transport vesicles. RAB11FIP3 is one of many proteins that interact with and regulate Rab GTPases (Hales et al., 2001 [PubMed 11495908]).[supplied by OMIM, Mar 2008],

Function : similarity:Contains 2 EF-hand domains.,subcellular location:Colocalizes with RAB11A at recycling endosomes.,subunit:Forms an heterooligomeric complex with RAB11FIP4. Binds to RAB11A, RAB11B and RAB25.,

Subcellular Location : Recycling endosome membrane ; Peripheral membrane protein. Cytoplasm, cytoskeleton, microtubule organizing center, centrosome . Cleavage furrow . Midbody . In early mitosis remains diffuse and distributed through the cell. The onset of anaphase sequesters these vesicles to the centrosomes at the opposite poles of the cell. During telophase these vesicles move from the centrosomes, to the furrow, and then to the midbody to aid in abscission (PubMed:15158446, PubMed:15601896, PubMed:18511905). Interaction with Rab11 mediates localization to endosomes (PubMed:11495908). Interaction with ARF6 mediates localization to the midbody (PubMed:16148947). .

Expression : Brain,Ovary,

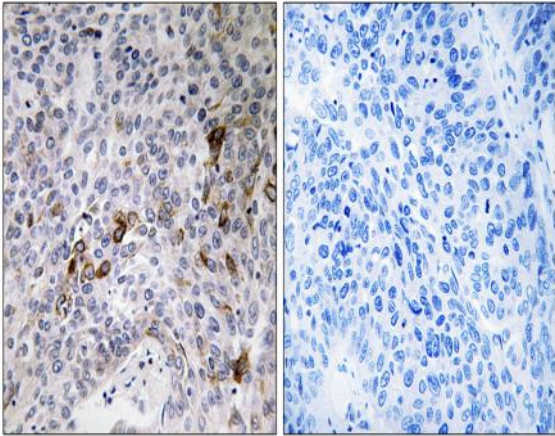
Sort : 13240

No4 : 1

Host : Rabbit

Modifications : Unmodified

Products Images



Immunohistochemistry analysis of paraffin-embedded human lung carcinoma tissue, using RAB11FIP3 Antibody. The picture on the right is blocked with the synthesized peptide.