

## Rab 7L1 Polyclonal Antibody

<b>Catalog No :</b>	YT3939
<b>Reactivity :</b>	Human;Mouse;Rat
<b>Applications :</b>	WB;ELISA;IHC
<b>Target :</b>	Rab 7L1
<b>Gene Name :</b>	RAB7L1
<b>Protein Name :</b>	Ras-related protein Rab-7L1
<b>Human Gene Id :</b>	8934
<b>Human Swiss Prot No :</b>	O14966
<b>Mouse Swiss Prot No :</b>	Q91YQ1
<b>Rat Gene Id :</b>	171122
<b>Rat Swiss Prot No :</b>	Q63481
<b>Immunogen :</b>	The antiserum was produced against synthesized peptide derived from human RAB7L1. AA range:115-164
<b>Specificity :</b>	Rab 7L1 Polyclonal Antibody detects endogenous levels of Rab 7L1 protein.
<b>Formulation :</b>	Liquid in PBS containing 50% glycerol, 0.5% BSA and 0.02% sodium azide.
<b>Source :</b>	Polyclonal, Rabbit,IgG
<b>Dilution :</b>	WB 1:500-2000;IHC 1:50-300; ELISA 2000-20000
<b>Purification :</b>	The antibody was affinity-purified from rabbit antiserum by affinity-chromatography using epitope-specific immunogen.
<b>Concentration :</b>	1 mg/ml

**Storage Stability :** -15°C to -25°C/1 year(Do not lower than -25°C)

**Observed Band :** 28kD

**Background :** similarity:Belongs to the small GTPase superfamily. Rab family.,tissue specificity:Ubiquitous.,

**Function :** similarity:Belongs to the small GTPase superfamily. Rab family.,tissue specificity:Ubiquitous.,

**Subcellular Location :** Cell membrane ; Lipid-anchor ; Cytoplasmic side . Cytoplasm . Cytoplasm, perinuclear region . Golgi apparatus . Golgi apparatus, trans-Golgi network . Vacuole . Cytoplasm, cytoskeleton . Colocalizes with LRRK2 along tubular structures emerging from Golgi apparatus (PubMed:29212815). Colocalizes with GM130 at the Golgi apparatus (PubMed:22042847). Colocalizes with dynamic tubules emerging from and retracting to the Golgi apparatus (PubMed:22042847). Colocalizes with TGN46 at the trans-Golgi network (TGN) (PubMed:24788816). In Salmonella enterica serovar Typhi (S.Typhi) infected epithelial cells, is recruited and colocalized with both S.Typhi-containing vacuoles and dynamic tubules as well as those emerging from the vacuole toward the cell periphery (PubMed:22042847). .

**Expression :** Ubiquitous.

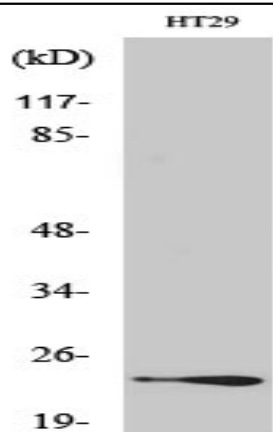
**Sort :** 13235

**No4 :** 1

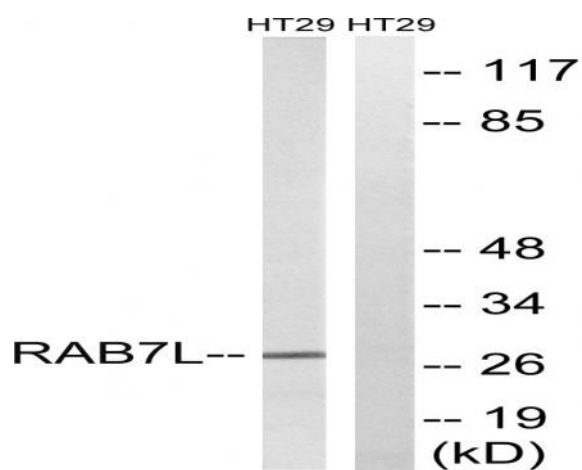
**Host :** Rabbit

**Modifications :** Unmodified

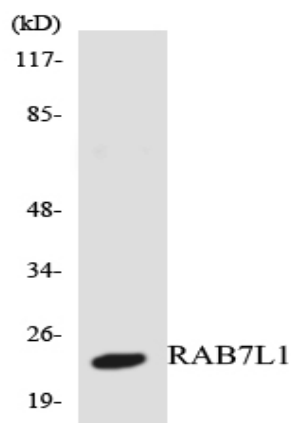
## Products Images



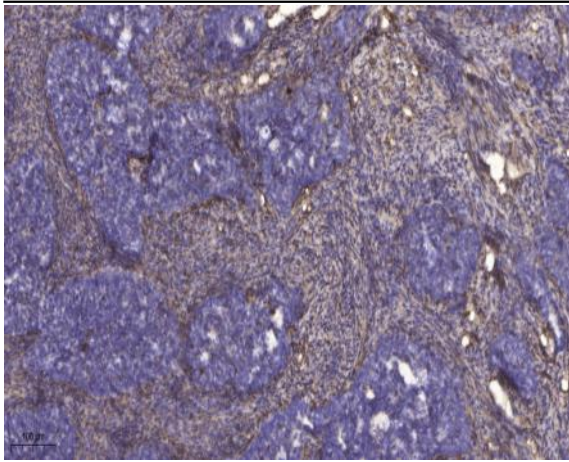
Western Blot analysis of various cells using Rab 7L1 Polyclonal Antibody



Western blot analysis of lysates from HT-29 cells, using RAB7L1 Antibody. The lane on the right is blocked with the synthesized peptide.



Western blot analysis of the lysates from HepG2 cells using RAB7L1 antibody.



Immunohistochemical analysis of paraffin-embedded human cervical carcinoma. 1, Antibody was diluted at 1:200(4° overnight). 2, Tris-EDTA,pH9.0 was used for antigen retrieval. 3,Secondary antibody was diluted at 1:200(room temperature, 45min).