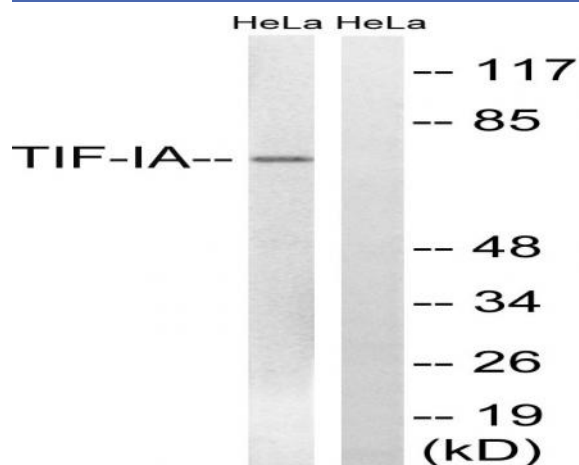


Rrn3 Polyclonal Antibody

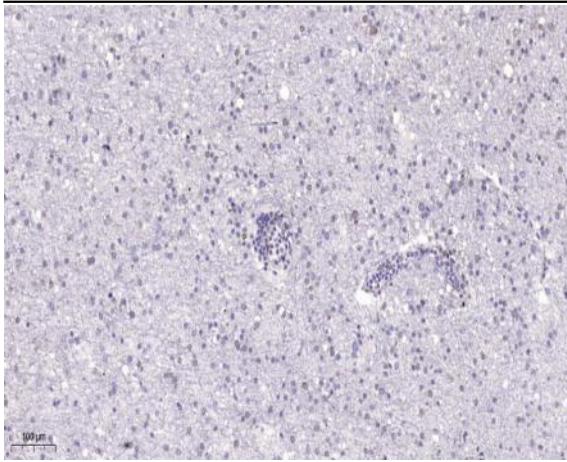
Catalog No :	YT4176
Reactivity :	Human;Rat;Mouse;
Applications :	WB;IHC;IF;ELISA
Target :	TIF-IA
Gene Name :	RRN3
Protein Name :	RNA polymerase I-specific transcription initiation factor RRN3
Human Gene Id :	54700
Human Swiss Prot No :	Q9NYV6
Mouse Swiss Prot No :	B2RS91
Immunogen :	The antiserum was produced against synthesized peptide derived from human TIF-IA. AA range:602-651
Specificity :	Rrn3 Polyclonal Antibody detects endogenous levels of Rrn3 protein.
Formulation :	Liquid in PBS containing 50% glycerol, 0.5% BSA and 0.02% sodium azide.
Source :	Polyclonal, Rabbit,IgG
Dilution :	WB 1:500 - 1:2000. IHC 1:100 - 1:300. ELISA: 1:5000.. IF 1:50-200
Purification :	The antibody was affinity-purified from rabbit antiserum by affinity-chromatography using epitope-specific immunogen.
Concentration :	1 mg/ml
Storage Stability :	-15°C to -25°C/1 year(Do not lower than -25°C)
Observed Band :	70kD

Background :	function:Required for efficient transcription initiation by RNA polymerase I.,similarity:Belongs to the RRN3 family.,
Function :	function:Required for efficient transcription initiation by RNA polymerase I.,similarity:Belongs to the RRN3 family.,
Subcellular Location :	Nucleus, nucleolus .
Expression :	Hippocampus,Kidney,Pooled,Spleen,
Tag :	orthogonal
Sort :	14612
No4 :	1
Host :	Rabbit
Modifications :	Unmodified

Products Images



Western blot analysis of lysates from HeLa cells, treated with calyculinA 50ng/ml 30', using TIF-IA Antibody. The lane on the right is blocked with the synthesized peptide.



Immunohistochemical analysis of paraffin-embedded human brain. 1, Tris-EDTA, pH 9.0 was used for antigen retrieval. 2 Antibody was diluted at 1:200 (4° overnight). 3, Secondary antibody was diluted at 1:200 (room temperature, 45 min).