

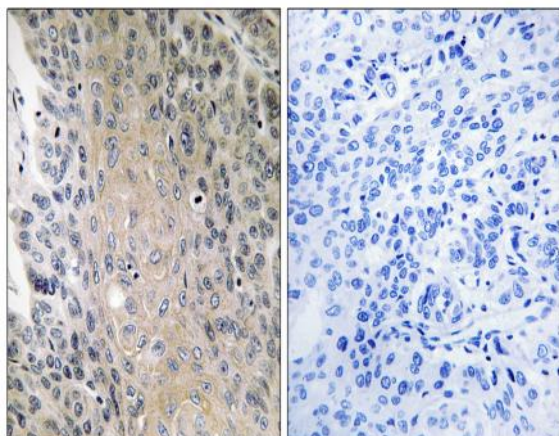
Rab 41 Polyclonal Antibody

Catalog No :	YT3935
Reactivity :	Human
Applications :	IHC;IF;ELISA
Target :	Rab 41
Gene Name :	RAB41
Protein Name :	Ras-related protein Rab-41
Human Gene Id :	347517
Human Swiss Prot No :	Q5JT25
Immunogen :	The antiserum was produced against synthesized peptide derived from human RAB41. AA range:115-164
Specificity :	Rab 41 Polyclonal Antibody detects endogenous levels of Rab 41 protein.
Formulation :	Liquid in PBS containing 50% glycerol, 0.5% BSA and 0.02% sodium azide.
Source :	Polyclonal, Rabbit,IgG
Dilution :	IHC 1:100 - 1:300. ELISA: 1:20000.. IF 1:50-200
Purification :	The antibody was affinity-purified from rabbit antiserum by affinity-chromatography using epitope-specific immunogen.
Concentration :	1 mg/ml
Storage Stability :	-15°C to -25°C/1 year(Do not lower than -25°C)
Molecularweight :	24kD
Background :	This gene encodes a small GTP-binding protein that belongs to the largest family within the Ras superfamily. These proteins function as regulators of

membrane trafficking. They cycle between inactive GDP-bound and activated GTP-bound states, which is controlled by GTP hydrolysis-activating proteins (GAPs). This family member can be activated by the GAP protein RN-Tre, and it is localized to the Golgi complex. [provided by RefSeq, May 2010],

Function :	similarity:Belongs to the small GTPase superfamily. Rab family.,
Subcellular Location :	Cytoplasm . punctate localization concentrated in ruffled regions at the cell periphery.
Expression :	Widely expressed in brain, testis, lung, heart, ovary, colon, kidney, uterus and spleen but not in liver.
Sort :	13230
No4 :	1
Host :	Rabbit
Modifications :	Unmodified

Products Images



Immunohistochemistry analysis of paraffin-embedded human lung carcinoma, using RAB41 Antibody. The picture on the right is blocked with the synthesized peptide.