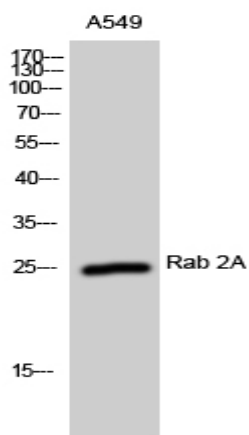


Rab 2A Polyclonal Antibody

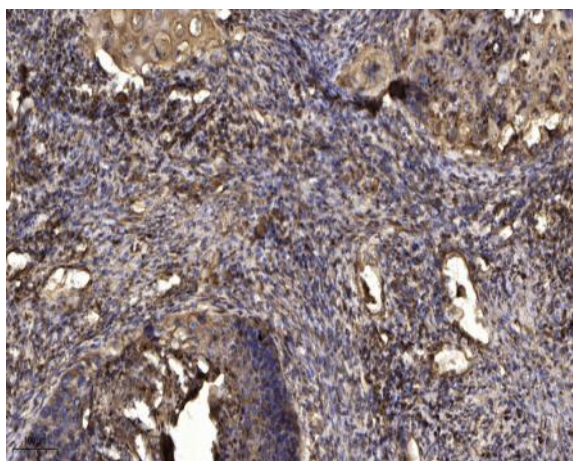
Catalog No :	YT3924
Reactivity :	Human;Mouse;Rat
Applications :	WB;IHC;IF;ELISA
Target :	Rab 2A
Fields :	>>AMPK signaling pathway
Gene Name :	RAB2A
Protein Name :	Ras-related protein Rab-2A
Human Gene Id :	5862
Human Swiss Prot No :	P61019
Mouse Gene Id :	59021
Mouse Swiss Prot No :	P53994
Rat Gene Id :	65158
Rat Swiss Prot No :	P05712
Immunogen :	The antiserum was produced against synthesized peptide derived from human RAB2A. AA range:84-133
Specificity :	Rab 2A Polyclonal Antibody detects endogenous levels of Rab 2A protein.
Formulation :	Liquid in PBS containing 50% glycerol, 0.5% BSA and 0.02% sodium azide.
Source :	Polyclonal, Rabbit,IgG
Dilution :	WB 1:500 - 1:2000. IHC 1:100 - 1:300. ELISA: 1:20000.. IF 1:50-200

Purification :	The antibody was affinity-purified from rabbit antiserum by affinity-chromatography using epitope-specific immunogen.
Concentration :	1 mg/ml
Storage Stability :	-15°C to -25°C/1 year(Do not lower than -25°C)
Observed Band :	25kD
Background :	The protein encoded by this gene belongs to the Rab family, members of which are small molecular weight guanosine triphosphatases (GTPases) that contain highly conserved domains involved in GTP binding and hydrolysis. The Rabs are membrane-bound proteins, involved in vesicular fusion and trafficking. This protein is a resident of pre-Golgi intermediates, and is required for protein transport from the endoplasmic reticulum (ER) to the Golgi complex. Alternatively spliced transcript variants encoding different isoforms have been found for this gene. [provided by RefSeq, Oct 2011],
Function :	function:Required for protein transport from the endoplasmic reticulum to the Golgi complex.,similarity:Belongs to the small GTPase superfamily. Rab family.,subcellular location:Identified by mass spectrometry in melanosome fractions from stage I to stage IV.,subunit:Interacts with PRKCI.,
Subcellular Location :	Endoplasmic reticulum-Golgi intermediate compartment membrane ; Lipid-anchor . Melanosome . Endoplasmic reticulum membrane ; Lipid-anchor . Golgi apparatus membrane ; Lipid-anchor . Cytoplasmic vesicle, secretory vesicle, acrosome . Localized in the Golgi apparatus in the round spermatids and in the acrosome in the elongating spermatid (By similarity). Identified by mass spectrometry in melanosome fractions from stage I to stage IV (PubMed:17081065). .
Expression :	Brain,Skin,
Sort :	13219
No4 :	1
Host :	Rabbit
Modifications :	Unmodified

Products Images



Western Blot analysis of A549 cells using Rab 2A Polyclonal Antibody



Immunohistochemical analysis of paraffin-embedded human Squamous cell carcinoma of lung. 1, Antibody was diluted at 1:200(4° overnight). 2, Tris-EDTA,pH9.0 was used for antigen retrieval. 3,Secondary antibody was diluted at 1:200(room temperature, 45min).