

Rit1 Polyclonal Antibody

Catalog No :	YT4149
Reactivity :	Human;Mouse
Applications :	WB;ELISA;IHC
Target :	Rit1
Gene Name :	RIT1
Protein Name :	GTP-binding protein Rit1
Human Gene Id :	6016
Human Swiss Prot No :	Q92963
Mouse Gene Id :	19769
Mouse Swiss Prot No :	P70426
Immunogen :	The antiserum was produced against synthesized peptide derived from human RIT1. AA range:170-219
Specificity :	Rit1 Polyclonal Antibody detects endogenous levels of Rit1 protein.
Formulation :	Liquid in PBS containing 50% glycerol, 0.5% BSA and 0.02% sodium azide.
Source :	Polyclonal, Rabbit,IgG
Dilution :	WB 1:500-2000;IHC 1:50-300; ELISA 2000-20000
Purification :	The antibody was affinity-purified from rabbit antiserum by affinity-chromatography using epitope-specific immunogen.
Concentration :	1 mg/ml
Storage Stability :	-15°C to -25°C/1 year(Do not lower than -25°C)

Observed Band : 25kD

Background : This gene encodes a member of a subfamily of Ras-related GTPases. The encoded protein is involved in regulating p38 MAPK-dependent signaling cascades related to cellular stress. This protein also cooperates with nerve growth factor to promote neuronal development and regeneration. Alternate splicing results in multiple transcript variants. [provided by RefSeq, Feb 2012],

Function : enzyme regulation:Alternate between an inactive form bound to GDP and an active form bound to GTP.,function:Plays a crucial role in coupling NGF stimulation to the activation of both EPHB2 and MAPK14 signaling pathways and in NGF-dependent neuronal differentiation.,miscellaneous:Shows rapid uncatalyzed guanine nucleotide dissociation rates, which are much faster than those of most Ras subfamily members.,miscellaneous:Stimulation of the NGF and EGF receptor signaling pathways results in rapid and prolonged activation.,similarity:Belongs to the small GTPase superfamily. Ras family.,subunit:Interacts with MLLT4, the C-terminal domain of RALGDS and RLF, but not with RIN1 and PIK3CA. RLF binds exclusively to the active GTP-bound form. Strongly interacts with BRAF, but only weakly with RAF1. BARF and RAF1 association is dependent upon the GTP-bound state. Interacts with RGL3.,tissue specificit

Subcellular Cell membrane.

Location :**Expression :** Expressed in many tissues.

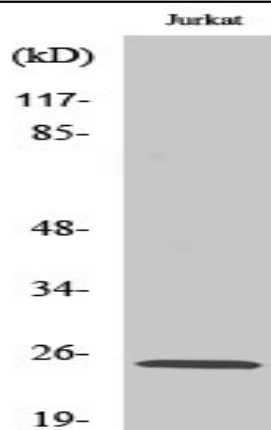
Sort : 14533

No4 : 1

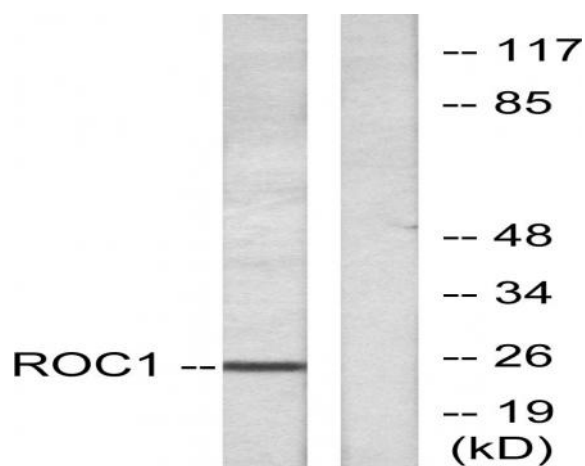
Host : Rabbit

Modifications : Unmodified

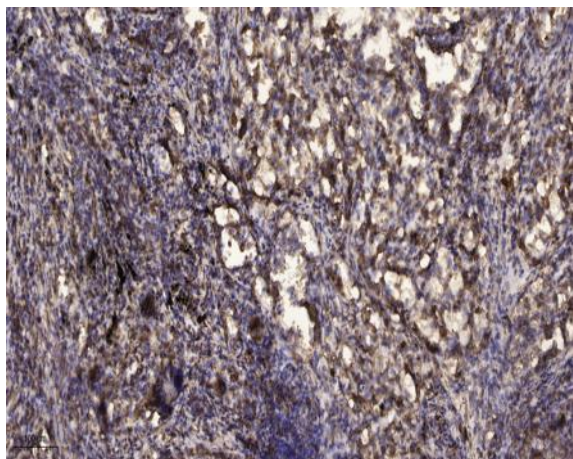
Products Images



Western Blot analysis of various cells using Rit1 Polyclonal Antibody diluted at 1:500



Western blot analysis of lysates from Jurkat cells, using RIT1 Antibody. The lane on the right is blocked with the synthesized peptide.



Immunohistochemical analysis of paraffin-embedded human Squamous cell carcinoma of lung. 1, Antibody was diluted at 1:200(4° overnight). 2, Tris-EDTA,pH9.0 was used for antigen retrieval. 3,Secondary antibody was diluted at 1:200(room temperature, 45min).