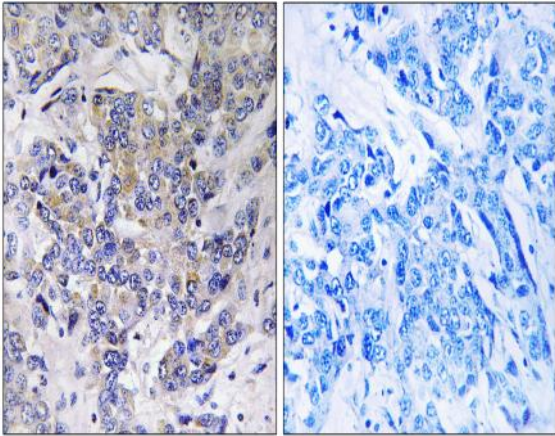


Ribosomal Protein S21 Polyclonal Antibody

Catalog No :	YT4130
Reactivity :	Human;Mouse;Rat
Applications :	IHC;IF;ELISA
Target :	Ribosomal Protein S21
Fields :	>>Ribosome;>>Coronavirus disease - COVID-19
Gene Name :	RPS21
Protein Name :	40S ribosomal protein S21
Human Gene Id :	6227
Human Swiss Prot No :	P63220
Mouse Gene Id :	66481
Mouse Swiss Prot No :	Q9CQR2
Rat Gene Id :	1.00363e+008
Rat Swiss Prot No :	P05765
Immunogen :	The antiserum was produced against synthesized peptide derived from human RPS21. AA range:31-80
Specificity :	Ribosomal Protein S21 Polyclonal Antibody detects endogenous levels of Ribosomal Protein S21 protein.
Formulation :	Liquid in PBS containing 50% glycerol, 0.5% BSA and 0.02% sodium azide.
Source :	Polyclonal, Rabbit,IgG
Dilution :	IHC 1:100 - 1:300. ELISA: 1:10000.. IF 1:50-200

Purification :	The antibody was affinity-purified from rabbit antiserum by affinity-chromatography using epitope-specific immunogen.
Concentration :	1 mg/ml
Storage Stability :	-15°C to -25°C/1 year(Do not lower than -25°C)
Molecularweight :	9kD
Cell Pathway :	Ribosome;
Background :	Ribosomes, the organelles that catalyze protein synthesis, consist of a small 40S subunit and a large 60S subunit. Together these subunits are composed of 4 RNA species and approximately 80 structurally distinct proteins. This gene encodes a ribosomal protein that is a component of the 40S subunit. The protein belongs to the S21E family of ribosomal proteins. It is located in the cytoplasm. Alternative splice variants that encode different protein isoforms have been described, but their existence has not been verified. As is typical for genes encoding ribosomal proteins, there are multiple processed pseudogenes of this gene dispersed through the genome. [provided by RefSeq, Jul 2008],
Function :	similarity:Belongs to the ribosomal protein S21e family.,
Subcellular Location :	Cytoplasm, cytosol . Cytoplasm . Rough endoplasmic reticulum . Detected on cytosolic polysomes (PubMed:25957688). Detected in ribosomes that are associated with the rough endoplasmic reticulum (By similarity). .
Expression :	Blood cells,Brain,Pancreas,Placenta,T-cell,
Sort :	14497
No4 :	1
Host :	Rabbit
Modifications :	Unmodified

Products Images



Immunohistochemistry analysis of paraffin-embedded human breast carcinoma tissue, using RPS21 Antibody. The picture on the right is blocked with the synthesized peptide.