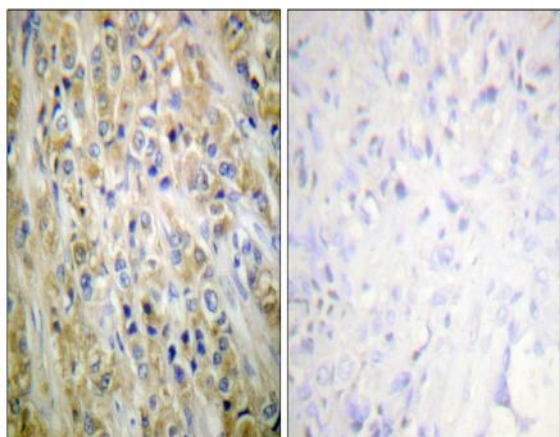


PSA Polyclonal Antibody

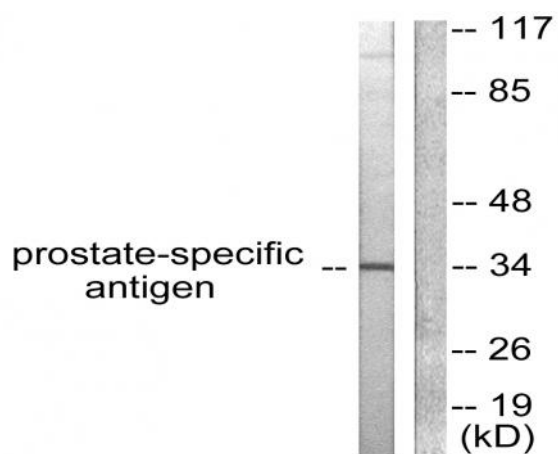
| | |
|------------------------------|---|
| Catalog No : | YT3876 |
| Reactivity : | Human;Rat |
| Applications : | WB;IHC;IF;ELISA |
| Target : | PSA |
| Fields : | >>Pathways in cancer;>>Prostate cancer |
| Gene Name : | KLK3 |
| Protein Name : | Prostate-specific antigen |
| Human Gene Id : | 354 |
| Human Swiss Prot No : | P07288 |
| Immunogen : | The antiserum was produced against synthesized peptide derived from human Prostate-specific Antigen. AA range:81-130 |
| Specificity : | PSA Polyclonal Antibody detects endogenous levels of PSA protein. |
| Formulation : | Liquid in PBS containing 50% glycerol, 0.5% BSA and 0.02% sodium azide. |
| Source : | Polyclonal, Rabbit,IgG |
| Dilution : | WB 1:500 - 1:2000. IHC 1:100 - 1:300. IF 1:200 - 1:1000. ELISA: 1:20000. Not yet tested in other applications. |
| Purification : | The antibody was affinity-purified from rabbit antiserum by affinity-chromatography using epitope-specific immunogen. |
| Concentration : | 1 mg/ml |
| Storage Stability : | -15°C to -25°C/1 year(Do not lower than -25°C) |
| Observed Band : | 34kD |

| | |
|-------------------------------|--|
| Cell Pathway : | Pathways in cancer;Prostate cancer; |
| Background : | <p>Kallikreins are a subgroup of serine proteases having diverse physiological functions. Growing evidence suggests that many kallikreins are implicated in carcinogenesis and some have potential as novel cancer and other disease biomarkers. This gene is one of the fifteen kallikrein subfamily members located in a cluster on chromosome 19. Its protein product is a protease present in seminal plasma. It is thought to function normally in the liquefaction of seminal coagulum, presumably by hydrolysis of the high molecular mass seminal vesicle protein. Serum level of this protein, called PSA in the clinical setting, is useful in the diagnosis and monitoring of prostatic carcinoma. Alternate splicing of this gene generates several transcript variants encoding different isoforms. [provided by RefSeq, Jul 2008],</p> |
| Function : | <p>catalytic activity:Preferential cleavage: -Tyr- -Xaa-.,function:Hydrolyzes semenogelin-1 thus leading to the liquefaction of the seminal coagulum.,online information:Prostate-specific antigen entry,similarity:Belongs to the peptidase S1 family.,similarity:Belongs to the peptidase S1 family. Kallikrein subfamily.,similarity:Contains 1 peptidase S1 domain.,</p> |
| Subcellular Location : | Secreted. |
| Expression : | Leukocyte,PNS,Prostate, |
| Sort : | 13100 |
| No4 : | 1 |
| Host : | Rabbit |
| Modifications : | Unmodified |

Products Images



Immunohistochemistry analysis of paraffin-embedded human prostate carcinoma tissue, using Prostate-specific Antigen Antibody. The picture on the right is blocked with the synthesized peptide.



Western blot analysis of lysates from mouse heart cells, using Prostate-specific Antigen Antibody. The lane on the right is blocked with the synthesized peptide.