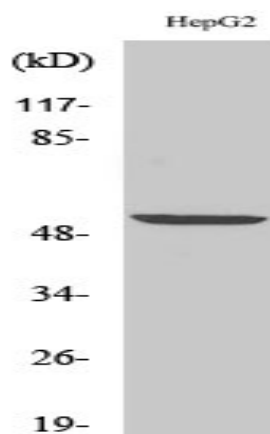


## PRPH Polyclonal Antibody

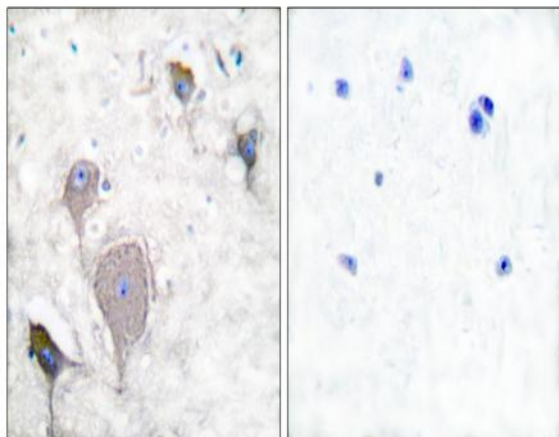
<b>Catalog No :</b>	YT3870
<b>Reactivity :</b>	Human;Rat
<b>Applications :</b>	WB;IHC;IF;ELISA
<b>Target :</b>	Peripherin
<b>Fields :</b>	>>Amyotrophic lateral sclerosis;>>Pathways of neurodegeneration - multiple diseases
<b>Gene Name :</b>	PRPH
<b>Protein Name :</b>	Peripherin
<b>Human Gene Id :</b>	5630
<b>Human Swiss Prot No :</b>	P41219
<b>Mouse Swiss Prot No :</b>	P15331
<b>Rat Swiss Prot No :</b>	P21807
<b>Immunogen :</b>	The antiserum was produced against synthesized peptide derived from human Peripherin. AA range:421-470
<b>Specificity :</b>	PRPH Polyclonal Antibody detects endogenous levels of PRPH protein.
<b>Formulation :</b>	Liquid in PBS containing 50% glycerol, 0.5% BSA and 0.02% sodium azide.
<b>Source :</b>	Polyclonal, Rabbit,IgG
<b>Dilution :</b>	WB 1:500 - 1:2000. IHC 1:100 - 1:300. ELISA: 1:20000.. IF 1:50-200
<b>Purification :</b>	The antibody was affinity-purified from rabbit antiserum by affinity-chromatography using epitope-specific immunogen.
<b>Concentration :</b>	1 mg/ml

<b>Storage Stability :</b>	-15°C to -25°C/1 year(Do not lower than -25°C)
<b>Observed Band :</b>	55kD
<b>Cell Pathway :</b>	Amyotrophic lateral sclerosis (ALS);
<b>Background :</b>	This gene encodes a cytoskeletal protein found in neurons of the peripheral nervous system. The encoded protein is a type III intermediate filament protein with homology to other cytoskeletal proteins such as desmin, and is a different protein that the peripherin found in photoreceptors. Mutations in this gene have been associated with susceptibility to amyotrophic lateral sclerosis. [provided by RefSeq, Jul 2008],
<b>Function :</b>	function:Class-III neuronal intermediate filament protein.,online information:Peripherin entry,similarity:Belongs to the intermediate filament family.,
<b>Subcellular Location :</b>	Cytoplasm, cytoskeleton . Cell projection, axon . Perikaryon .
<b>Expression :</b>	Expressed in the neurons of the outer hair cells in the organ of Corti and to a lesser extent in type I spiral ganglion cells.
<b>Sort :</b>	13082
<b>No4 :</b>	1
<b>Host :</b>	Rabbit
<b>Modifications :</b>	Unmodified

## Products Images



Western Blot analysis of various cells using PRPH Polyclonal Antibody diluted at 1:1000



Immunohistochemistry analysis of paraffin-embedded human brain tissue, using Peripherin Antibody. The picture on the right is blocked with the synthesized peptide.