

PRP19 Polyclonal Antibody

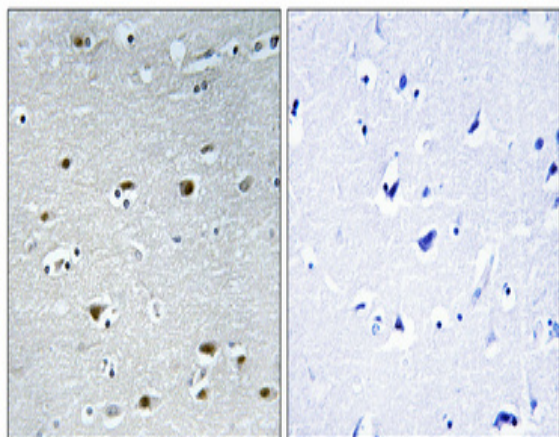
Catalog No :	YT3864
Reactivity :	Human;Mouse;Rat
Applications :	WB;IHC;IF;ELISA
Target :	PRP19
Fields :	>>Spliceosome;>>Ubiquitin mediated proteolysis
Gene Name :	PRPF19
Protein Name :	Pre-mRNA-processing factor 19
Human Gene Id :	27339
Human Swiss Prot No :	Q9UMS4
Mouse Gene Id :	28000
Mouse Swiss Prot No :	Q99KP6
Rat Gene Id :	246216
Rat Swiss Prot No :	Q9JMJ4
Immunogen :	The antiserum was produced against synthesized peptide derived from human PRPF19. AA range:171-220
Specificity :	PRP19 Polyclonal Antibody detects endogenous levels of PRP19 protein.
Formulation :	Liquid in PBS containing 50% glycerol, 0.5% BSA and 0.02% sodium azide.
Source :	Polyclonal, Rabbit,IgG
Dilution :	WB 1:500 - 1:2000. IHC 1:100 - 1:300. ELISA: 1:40000.. IF 1:50-200

Purification :	The antibody was affinity-purified from rabbit antiserum by affinity-chromatography using epitope-specific immunogen.
Concentration :	1 mg/ml
Storage Stability :	-15°C to -25°C/1 year(Do not lower than -25°C)
Observed Band :	50kD
Cell Pathway :	Spliceosome;Ubiquitin mediated proteolysis;
Background :	PSO4 is the human homolog of yeast Pso4, a gene essential for cell survival and DNA repair (Beck et al., 2008 [PubMed 18263876]).[supplied by OMIM, Sep 2008],
Function :	function:Plays a role in DNA double-strand break (DSB) repair and pre-mRNA splicing reaction. Binds double-stranded DNA in a sequence-nonspecific manner. Acts as a structural component of the nuclear framework. May also serve as a support for spliceosome binding and activity. Essential for spliceosome assembly in a oligomerization-dependent manner and might also be important for spliceosome stability. May have E3 ubiquitin ligase activity. The PSO4 complex is required in the DNA interstrand cross-links (ICLs) repair process. Overexpression of PRPF19 might extend the cellular life span by increasing the resistance to stress or by improving the DNA repair capacity of the cells.,induction:By gamma radiation and chemical mutagens but not by UV treatment.,similarity:Belongs to the WD repeat PRP19 family.,similarity:Contains 1 U-box domain.,similarity:Contains 7 WD repeats.,subcellular locatio
Subcellular Location :	Nucleus . Nucleus, nucleoplasm . Cytoplasm, cytoskeleton, spindle . Cytoplasm . Lipid droplet . Nucleoplasmic in interphase cells. Irregularly distributed in anaphase cells. In prophase cells, uniformly distributed, but not associated with condensing chromosomes. Found in extrachromosomal regions in metaphase cells. Mainly localized to the mitotic spindle apparatus when chromosomes segregate during anaphase. When nuclei reform during late telophase, uniformly distributed in daughter cells and displays no preferred association with decondensing chromatin. Recruited on damaged DNA at sites of double-strand break. .
Expression :	Ubiquitous. Weakly expressed in senescent cells of different tissue origins. Highly expressed in tumor cell lines.
Sort :	13076
No4 :	1
Host :	Rabbit

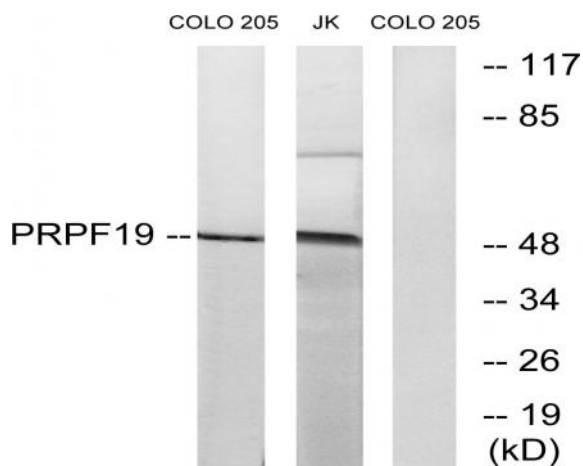
Products Images



Western Blot analysis of various cells using PRP19 Polyclonal Antibody



Immunohistochemical analysis of paraffin-embedded Human brain. Antibody was diluted at 1:100(4° overnight). High-pressure and temperature Tris-EDTA,pH8.0 was used for antigen retrieval. Negative control (right) obtained from antibody was pre-absorbed by immunogen peptide.



Western blot analysis of lysates from COLO and Jurkat cells, using PRPF19 Antibody. The lane on the right is blocked with the synthesized peptide.