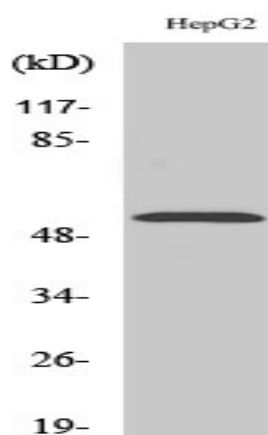


PREP-2 Polyclonal Antibody

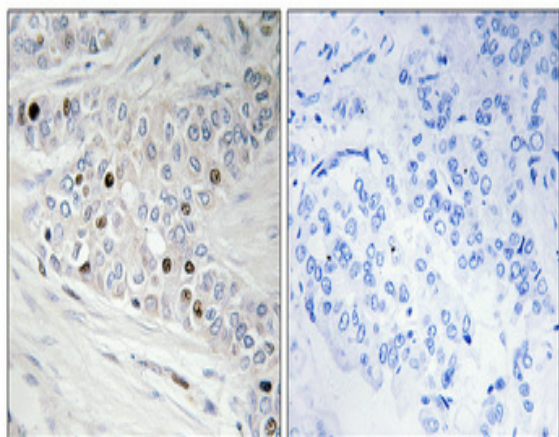
Catalog No :	YT3855
Reactivity :	Human;Mouse
Applications :	WB;IHC;IF;ELISA
Target :	PREP-2
Gene Name :	PKNOX2
Protein Name :	Homeobox protein PKNOX2
Human Gene Id :	63876
Human Swiss Prot No :	Q96KN3
Mouse Gene Id :	208076
Mouse Swiss Prot No :	Q8BG99
Immunogen :	The antiserum was produced against synthesized peptide derived from human PKNOX2. AA range:341-390
Specificity :	PREP-2 Polyclonal Antibody detects endogenous levels of PREP-2 protein.
Formulation :	Liquid in PBS containing 50% glycerol, 0.5% BSA and 0.02% sodium azide.
Source :	Polyclonal, Rabbit,IgG
Dilution :	WB 1:500 - 1:2000. IHC 1:100 - 1:300. ELISA: 1:20000.. IF 1:50-200
Purification :	The antibody was affinity-purified from rabbit antiserum by affinity-chromatography using epitope-specific immunogen.
Concentration :	1 mg/ml
Storage Stability :	-15°C to -25°C/1 year(Do not lower than -25°C)

Observed Band : 55kD**Background :** Homeodomain proteins are sequence-specific transcription factors that share a highly conserved DNA-binding domain and play fundamental roles in cell proliferation, differentiation, and death. PKNOX2 belongs to the TALE (3-amino acid loop extension) class of homeodomain proteins characterized by a 3-amino acid extension between alpha helices 1 and 2 within the homeodomain (Imoto et al., 2001 [PubMed 11549286]).[supplied by OMIM, Oct 2009],**Function :** similarity:Belongs to the TALE/MEIS homeobox family.,similarity:Contains 1 homeobox DNA-binding domain.,**Subcellular Location :** Nucleus .**Expression :** Brain,Small intestine,**Tag :** orthogonal**Sort :** 13006**No4 :** 1**Host :** Rabbit**Modifications :** Unmodified

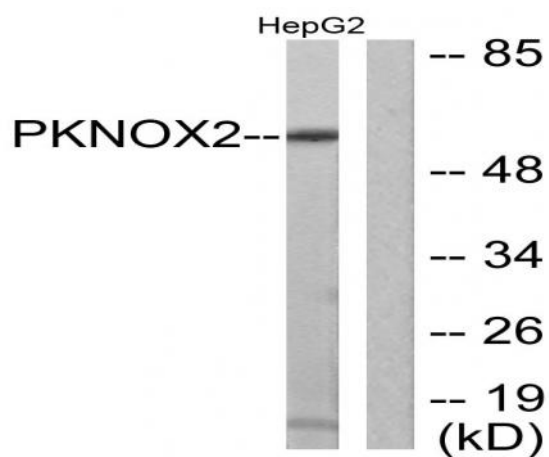
Products Images



Western Blot analysis of various cells using PREP-2 Polyclonal Antibody



Immunohistochemical analysis of paraffin-embedded Human breast cancer. Antibody was diluted at 1:100(4° overnight). High-pressure and temperature Tris-EDTA,pH8.0 was used for antigen retrieval. Negative contrl (right) obtaned from antibody was pre-absorbed by immunogen peptide.



Western blot analysis of lysates from HepG2 cells, using PKNOX2 Antibody. The lane on the right is blocked with the synthesized peptide.