

PRC Polyclonal Antibody

Catalog No :	YT3851
Reactivity :	Human;Mouse
Applications :	IHC;IF;ELISA
Target :	PRC
Gene Name :	PPRC1
Protein Name :	Peroxisome proliferator-activated receptor gamma coactivator-related protein 1
Human Gene Id :	23082
Human Swiss Prot No :	Q5VV67
Mouse Gene Id :	226169
Mouse Swiss Prot No :	Q6NZN1
Immunogen :	The antiserum was produced against synthesized peptide derived from human PPRC1. AA range:1609-1658
Specificity :	PRC Polyclonal Antibody detects endogenous levels of PRC protein.
Formulation :	Liquid in PBS containing 50% glycerol, 0.5% BSA and 0.02% sodium azide.
Source :	Polyclonal, Rabbit,IgG
Dilution :	IHC 1:100 - 1:300. ELISA: 1:40000.. IF 1:50-200
Purification :	The antibody was affinity-purified from rabbit antiserum by affinity-chromatography using epitope-specific immunogen.
Concentration :	1 mg/ml
Storage Stability :	-15°C to -25°C/1 year(Do not lower than -25°C)

Molecularweight : 178kD

Background : The protein encoded by this gene is similar to PPAR-gamma coactivator 1 (PPARGC1/PGC-1), a protein that can activate mitochondrial biogenesis in part through a direct interaction with nuclear respiratory factor 1 (NRF1). This protein has been shown to interact with NRF1. It is thought to be a functional relative of PPAR-gamma coactivator 1 that activates mitochondrial biogenesis through NRF1 in response to proliferative signals. Alternative splicing results in multiple transcript variants. [provided by RefSeq, Dec 2013],

Function : function:Acts as a coactivator during transcriptional activation of nuclear genes related to mitochondrial biogenesis and cell growth. Involved in the transcription coactivation of CREB and NRF1 target genes.,induction:Up-regulated by serum (at protein level).,similarity:Contains 1 RRM (RNA recognition motif) domain.,subcellular location:Colocalizes with NRF1.,subunit:Interacts with CREB1 and NRF1.,tissue specificity:Strongly expressed in heart and skeletal muscle, moderately in lung, placenta, intestine, liver, kidney, spleen, thymus, colon and brain. Also expressed in several oncocytic thyroid tumors.,

Subcellular Location : Nucleus . Colocalizes with NRF1 . .

Expression : Strongly expressed in heart and skeletal muscle, moderately in lung, placenta, intestine, liver, kidney, spleen, thymus, colon and brain. Also expressed in several oncocytic thyroid tumors.

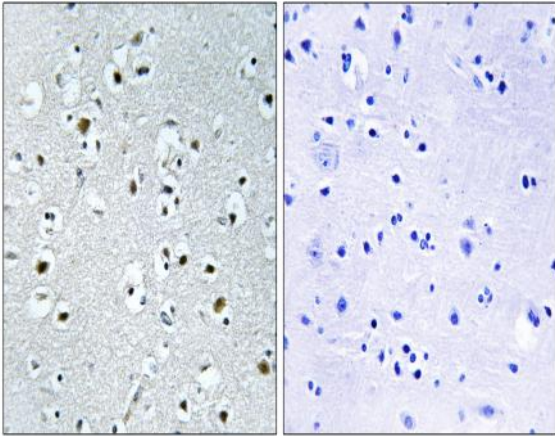
Sort : 12993

No4 : 1

Host : Rabbit

Modifications : Unmodified

Products Images



Immunohistochemistry analysis of paraffin-embedded human brain tissue, using PPRC1 Antibody. The picture on the right is blocked with the synthesized peptide.