

## Rho H Polyclonal Antibody

<b>Catalog No :</b>	YT4083
<b>Reactivity :</b>	Human;Mouse;Rat
<b>Applications :</b>	WB;IHC;IF;ELISA
<b>Target :</b>	Rho H
<b>Fields :</b>	>>Leukocyte transendothelial migration;>>Salmonella infection
<b>Gene Name :</b>	RhoH
<b>Protein Name :</b>	Rho-related GTP-binding protein RhoH
<b>Human Gene Id :</b>	399
<b>Human Swiss Prot No :</b>	Q15669
<b>Mouse Gene Id :</b>	74734
<b>Mouse Swiss Prot No :</b>	Q9D3G9
<b>Immunogen :</b>	The antiserum was produced against synthesized peptide derived from human RhoH. AA range:141-190
<b>Specificity :</b>	Rho H Polyclonal Antibody detects endogenous levels of Rho H protein.
<b>Formulation :</b>	Liquid in PBS containing 50% glycerol, 0.5% BSA and 0.02% sodium azide.
<b>Source :</b>	Polyclonal, Rabbit,IgG
<b>Dilution :</b>	WB 1:500 - 1:2000. IHC 1:100 - 1:300. IF 1:200 - 1:1000. ELISA: 1:20000. Not yet tested in other applications.
<b>Purification :</b>	The antibody was affinity-purified from rabbit antiserum by affinity-chromatography using epitope-specific immunogen.
<b>Concentration :</b>	1 mg/ml

**Storage Stability :** -15°C to -25°C/1 year(Do not lower than -25°C)

**Observed Band :** 21kD

**Cell Pathway :** Leukocyte transendothelial migration;

**Background :** The protein encoded by this gene is a member of the Ras superfamily of guanosine triphosphate (GTP)-metabolizing enzymes. The encoded protein is expressed in hematopoietic cells, where it functions as a negative regulator of cell growth and survival. This gene may be hypermutated or misexpressed in leukemias and lymphomas. Chromosomal translocations in non-Hodgkin's lymphoma occur between this locus and B-cell CLL/lymphoma 6 (BCL6) on chromosome 3, leading to the production of fusion transcripts. Alternative splicing in the 5' untranslated region results in multiple transcript variants that encode the same protein. [provided by RefSeq, May 2013],

**Function :** disease:A chromosomal aberration involving RHOH is found in a non-Hodgkin lymphoma cell line. Translocation t(3;4)(q27;p11) with BCL6.,similarity:Belongs to the small GTPase superfamily. Rho family.,tissue specificity:Transcribed only in hemopoietic cells.,

**Subcellular Location :** Cytoplasm . Cell membrane ; Lipid-anchor ; Cytoplasmic side . Colocalizes together with ZAP70 in the immunological synapse. .

**Expression :** Expressed only in hematopoietic cells. Present at very high levels in the thymus, less abundant in the spleen, and least abundant in the bone marrow. Expressed at a higher level in the TH1 subtype of T-helper cells than in the TH2 subpopulation. Expressed in neutrophils under inflammatory conditions, such as cystic fibrosis, ulcerative colitis and appendicitis.

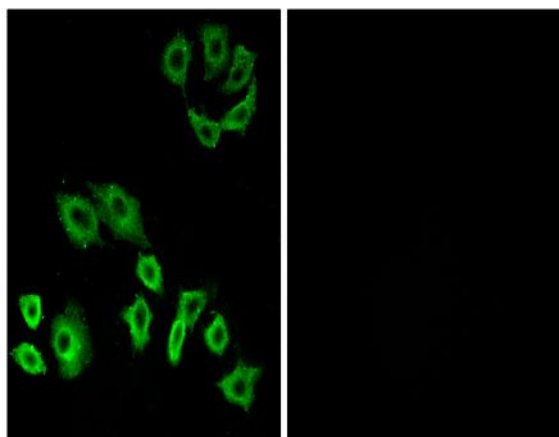
**Sort :** 14449

**No4 :** 1

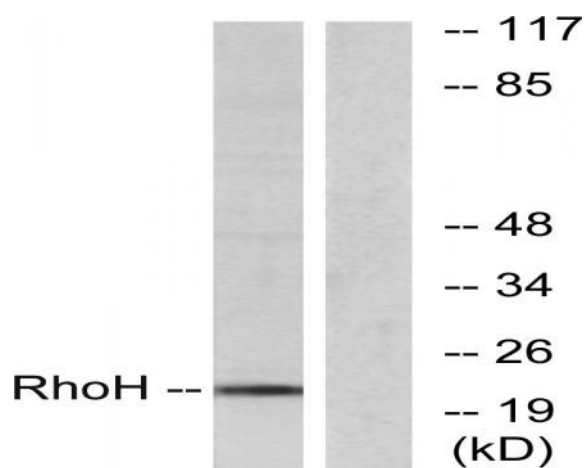
**Host :** Rabbit

**Modifications :** Unmodified

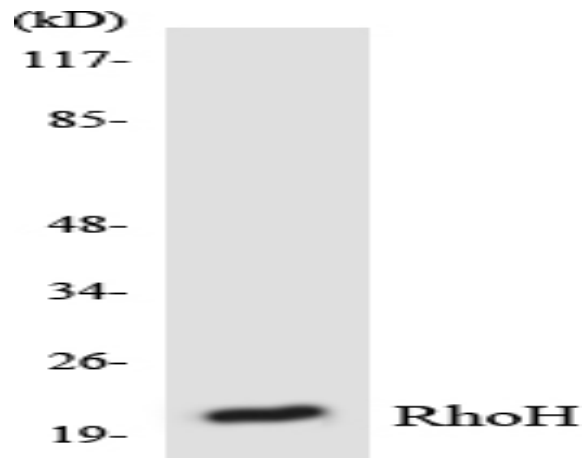
## Products Images



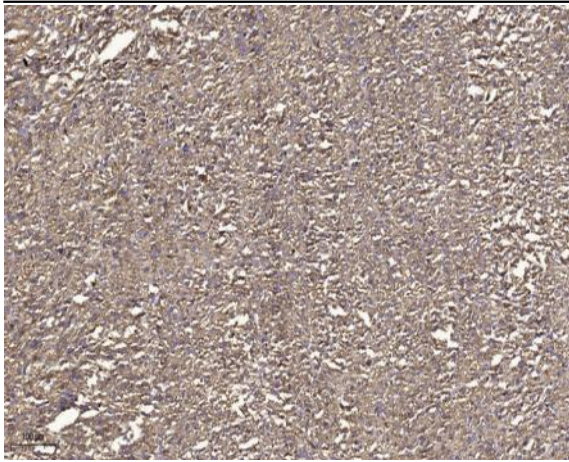
Immunofluorescence analysis of A549 cells, using RhoH Antibody. The picture on the right is blocked with the synthesized peptide.



Western blot analysis of lysates from HT-29 cells, using RhoH Antibody. The lane on the right is blocked with the synthesized peptide.



Western blot analysis of the lysates from RAW264.7 cells using RhoH antibody.



Immunohistochemical analysis of paraffin-embedded human small intestinal carcinoma tissue. 1,primary Antibody was diluted at 1:200(4° overnight). 2, Sodium citrate pH 6.0 was used for antigen retrieval(>98°C,20min). 3,Secondary antibody was diluted at 1:200