

## PP32R1 Polyclonal Antibody

<b>Catalog No :</b>	YT3833
<b>Reactivity :</b>	Human
<b>Applications :</b>	WB;IHC
<b>Target :</b>	PP32R1
<b>Gene Name :</b>	ANP32C
<b>Protein Name :</b>	Acidic leucine-rich nuclear phosphoprotein 32 family member C
<b>Human Gene Id :</b>	23520
<b>Human Swiss Prot No :</b>	O43423
<b>Mouse Swiss Prot No :</b>	Q64G17
<b>Immunogen :</b>	The antiserum was produced against synthesized peptide derived from human ANP32C. AA range:121-170
<b>Specificity :</b>	PP32R1 Polyclonal Antibody detects endogenous levels of PP32R1 protein.
<b>Formulation :</b>	Liquid in PBS containing 50% glycerol, 0.5% BSA and 0.02% sodium azide.
<b>Source :</b>	Polyclonal, Rabbit,IgG
<b>Dilution :</b>	WB 1:500-2000;IHC 1:50-300
<b>Purification :</b>	The antibody was affinity-purified from rabbit antiserum by affinity-chromatography using epitope-specific immunogen.
<b>Concentration :</b>	1 mg/ml
<b>Storage Stability :</b>	-15°C to -25°C/1 year(Do not lower than -25°C)
<b>Observed Band :</b>	26kD

**Background :** Phosphoprotein 32 (PP32) is a tumor suppressor that can inhibit several types of cancers, including prostate and breast cancers. The protein encoded by this gene is one of at least two proteins that are similar in amino acid sequence to PP32 and are part of the same acidic nuclear phosphoprotein gene family. However, unlike PP32, the encoded protein is tumorigenic. The tumor suppressor function of PP32 has been localized to a 25 amino acid region that is divergent between PP32 and the protein encoded by this gene. This gene does not contain introns. [provided by RefSeq, Jul 2008],

**Function :** caution:The His-140 polymorphism is uncertain. It has been found in prostatic cell line without corresponding normal tissue sample. Cells transfected with this variant expressed at least twice as much proteins than native cells.,similarity:Belongs to the ANP32 family.,similarity:Contains 4 LRR (leucine-rich) repeats.,tissue specificity:Expressed in activated stem cells, such as mobilized CD34+ cells and cord blood CD34+ cells, but not in resting bone marrow CD34+ cells. Expressed in a variety of neoplastic cell lines, mainly in prostatic adenocarcinoma cell lines. Not expressed in normal protastic tissue.,

**Subcellular Location :** nucleus,

**Expression :** Expressed in activated stem cells, such as mobilized CD34+ cells and cord blood CD34+ cells, but not in resting bone marrow CD34+ cells. Expressed in a variety of neoplastic cell lines, mainly in prostatic adenocarcinoma cell lines. Not expressed in normal prostatic tissue.

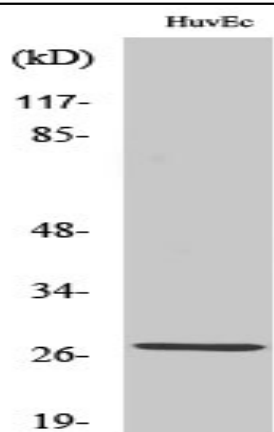
**Sort :** 12935

**No4 :** 1

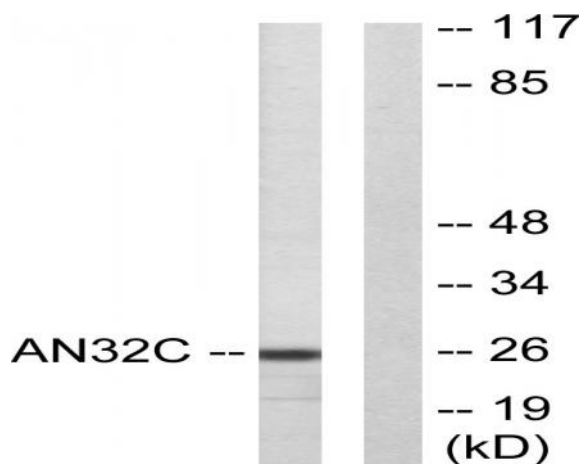
**Host :** Rabbit

**Modifications :** Unmodified

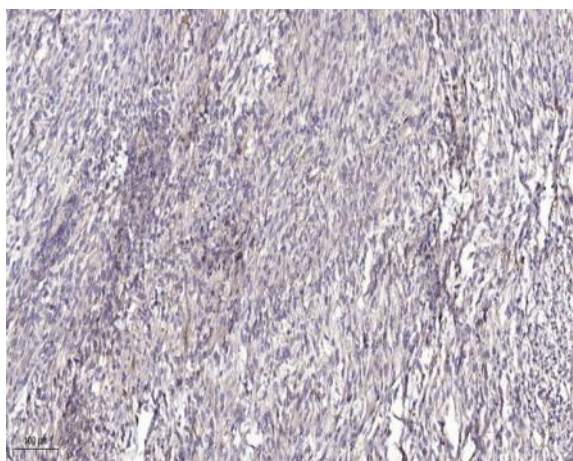
## Products Images



Western Blot analysis of various cells using PP32R1 Polyclonal Antibody diluted at 1:1000



Western blot analysis of lysates from HUVEC cells, using ANP32C Antibody. The lane on the right is blocked with the synthesized peptide.



Immunohistochemical analysis of paraffin-embedded human Colon cancer. 1, Antibody was diluted at 1:200(4° overnight). 2, Tris-EDTA,pH9.0 was used for antigen retrieval. 3,Secondary antibody was diluted at 1:200(room temperature, 45min).